



■ **SERRATURE DA INFILARE**  
MORTICE LOCKS



P. 74

■ **SERRATURE DA APPLICARE**  
RIM LOCKS



P. 82

■ **SERRATURE PER PORTE TAGLIAFUOCO  
E MULTIUSO**  
LOCKS FOR FIRE RESISTANT DOORS  
AND MULTIPURPOSE



P. 85

■ **MANIGLIE PER PORTE TAGLIAFUOCO  
E MULTIUSO**  
HANDLES FOR FIRE RESISTANT DOORS  
AND MULTIPURPOSE



P. 87

■ **SERRATURE PER PORTE VETRO**  
LOCKS FOR GLASS DOORS

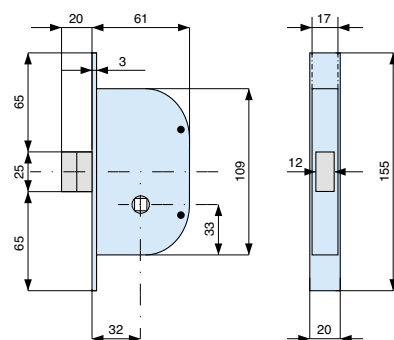


P. 88

### Solo scrocco reversibile in ottone

Brass reversible latch bolt

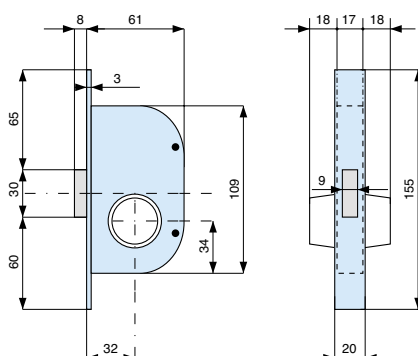
■ mm. 8



frontale forend	codice code ENT	euro	
acciaio zincato zinc plated steel	124320 001	4	68

### 2 mandate - catenaccio in ottone

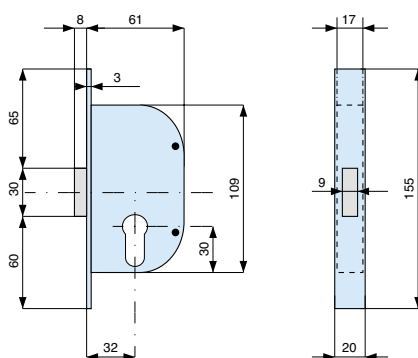
2 throws - brass deadbolt



con cilindro with cylinder	frontale forend	codice code ENT	euro	
013.20.0	acciaio zincato zinc plated steel	127320 000	2	50

### 2 mandate - catenaccio in ottone

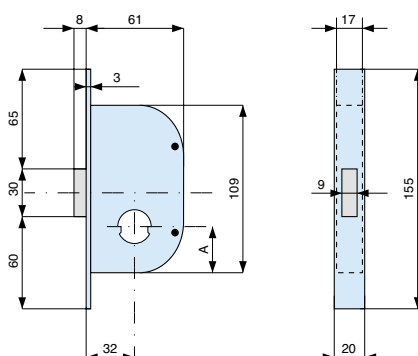
2 throws - brass deadbolt



con cilindro with cylinder	frontale forend	codice code ENT	euro	
015.56.0	acciaio zincato zinc plated steel	128320 000	2	50
senza cilindro without cylinder	acciaio zincato zinc plated steel	128320 001	2	50

### 2 mandate - catenaccio in ottone

2 throws - brass deadbolt

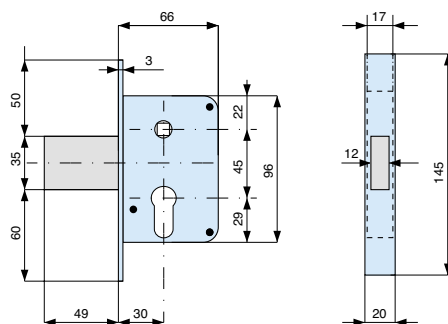


con cilindro with cylinder	frontale forend	codice code ENT	euro	
019.56.0	acciaio zincato zinc plated steel	129320 000	2	50
020.52.0	acciaio zincato zinc plated steel	129322 000	2	50

### Scrocco in acciaio con dispositivo di bloccaggio

Dead-locking steel latch-bolt

■ mm. 8

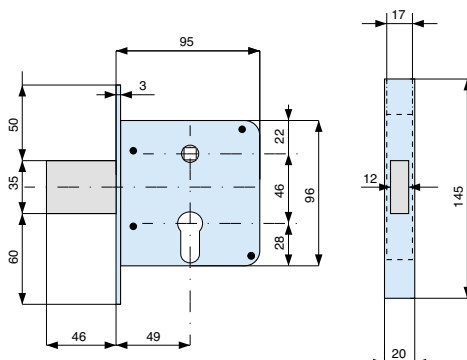


con cilindro with cylinder	frontale forend	codice code ENT	euro	
015.56.0		acciaio zincato zinc plated steel	132300 000	2 30
senza cilindro without cylinder		acciaio zincato zinc plated steel	132300 001	2 30

### Scrocco in acciaio con mandata

Steel single throw latch bolt

■ mm. 8

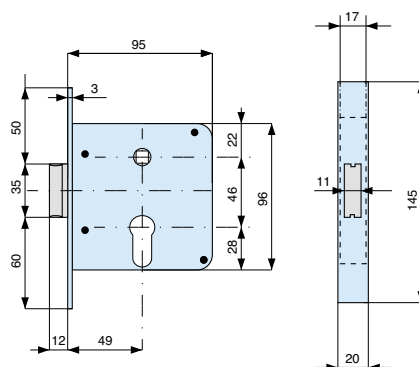


con cilindro with cylinder	frontale forend	codice code ENT	euro	
015.56.0		acciaio zincato zinc plated steel	133500 000	2 30
senza cilindro without cylinder		acciaio zincato zinc plated steel	133500 001	2 30

### Scrocco in ottone con mandata

Brass single throw latch bolt

■ mm. 8

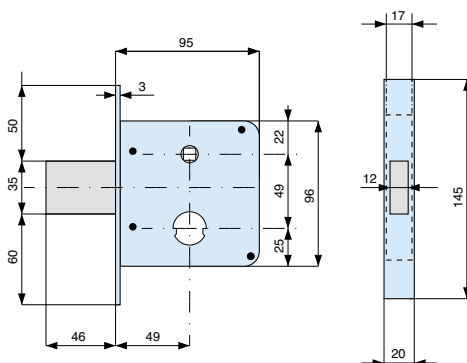


con cilindro with cylinder	frontale forend	codice code ENT	euro	
015.56.0		acciaio zincato zinc plated steel	133501 000	2 30
senza cilindro without cylinder		acciaio zincato zinc plated steel	133501 001	2 30

### Scrocco in acciaio con mandata

Steel single throw latch bolt

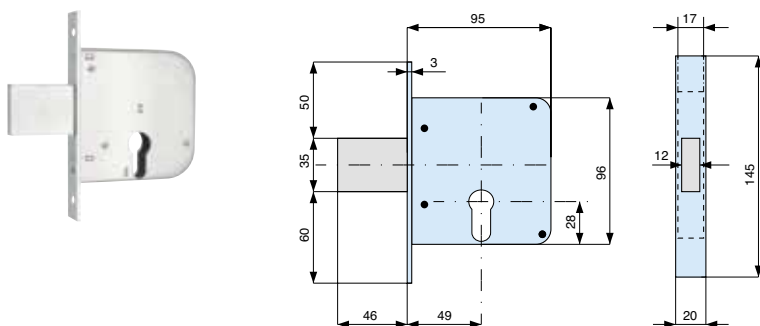
■ mm. 8



con cilindro with cylinder	frontale forend	codice code ENT	euro	
019.56.0		acciaio zincato zinc plated steel	134500 000	2 30

### 2 mandate - catenaccio in acciaio

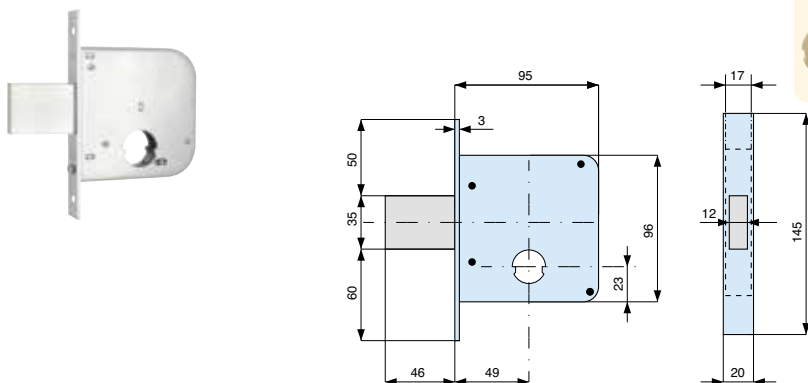
2 throws - steel deadbolt



con cilindro with cylinder	frontale forend	codice code ENT	euro	
015.56.0				
	acciaio zincato zinc plated steel	135500 000	2	30
senza cilindro without cylinder	acciaio zincato zinc plated steel	135500 001	2	30

### 2 mandate - catenaccio in acciaio

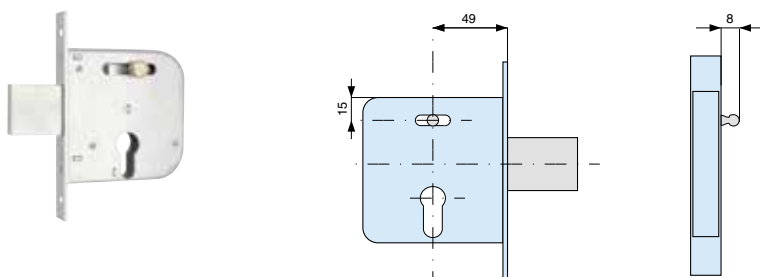
2 throws - steel deadbolt



con cilindro with cylinder	frontale forend	codice code ENT	euro	
019.56.0				
	acciaio zincato zinc plated steel	136500 000	2	30

### 2 mandate e scrocco con pomolino - catenaccio in acciaio

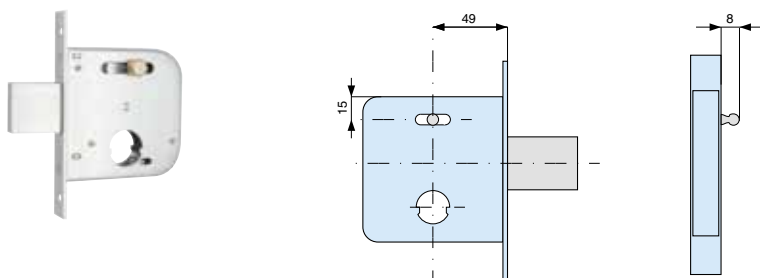
2 throws and latch bolt with knob - steel deadbolt



con cilindro with cylinder	frontale forend	codice code ENT	euro	
015.56.0				
	acciaio zincato zinc plated steel	138500 000	2	30
senza cilindro without cylinder	acciaio zincato zinc plated steel	138500 001	2	30

### 2 mandate e scrocco con pomolino - catenaccio in acciaio

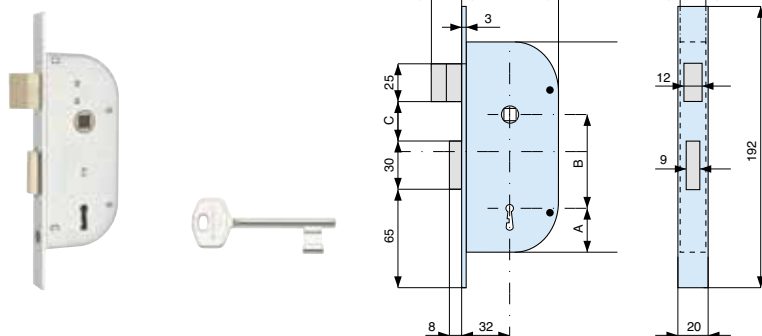
2 throws and latch bolt with knob - steel deadbolt



con cilindro with cylinder	frontale forend	codice code ENT	euro	
019.56.0				
	acciaio zincato zinc plated steel	139500 000	2	30

**2 mandate e scrocco con 1 chiave K01 - catenacci in ottone**  
2 throws and latch bolt with 1 key K01 - brass deadbolts

■ mm. 8

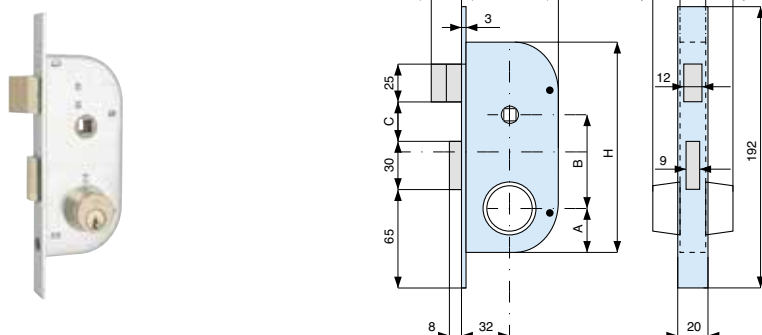


frontale forend	codice code ENT	euro	
acciaio zincato zinc plated steel	145320 001	4	68
	145324 001	4	68

	H	A	B	C
145320	139	29	62	29
145324	147	30	68	36

**2 mandate e scrocco - catenacci in ottone**  
2 throws and latch bolt - brass deadbolts

■ mm. 8

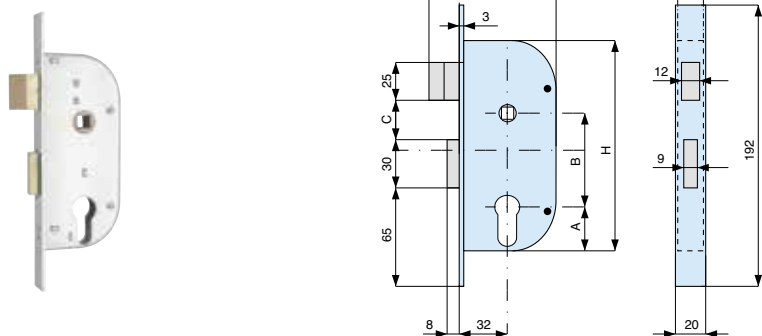


con cilindro with cylinder	frontale forend	codice code ENT	euro	
013.20.0	acciaio zincato zinc plated steel	147320 000	2	50
		147324 000	2	50

	H	A	B	C
147320	139	33	58	29
147324	147	34	64	36

**2 mandate e scrocco - catenacci in ottone**  
2 throws and latch bolt - brass deadbolts

■ mm. 8

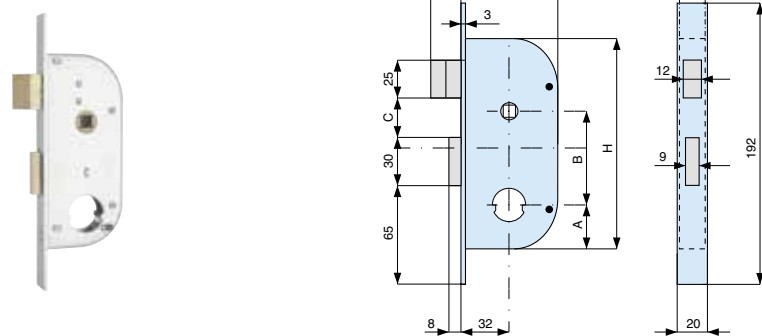


con cilindro with cylinder	frontale forend	codice code ENT	euro	
015.56.0	acciaio zincato zinc plated steel	148320 000	2	50
		148324 000	2	50
		148325 000	2	50
senza cilindro without cylinder	acciaio zincato zinc plated steel	148320 001	2	50
		148324 001	2	50
		148325 001	2	50

	H	A	B	C
148320	139	29	62	29
148324	147	30	68	36
148325	160	31	77	46

**2 mandate e scrocco - catenacci in ottone**  
2 throws and latch bolt - brass deadbolts

■ mm. 8

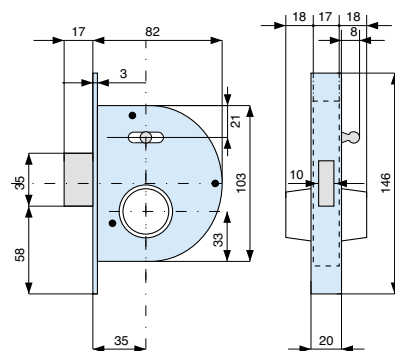


con cilindro with cylinder	frontale forend	codice code ENT	euro	
019.56.0	acciaio zincato zinc plated steel	149320 000	2	50
		149324 000	2	50
020.52.0	acciaio zincato zinc plated steel	149322 000	2	50
		149326 000	2	50

	H	A	B	C
149320	139	25	66	29
149322	139	29	62	29
149324	147	26	72	36
149326	147	30	68	36

### Scrocco a una mandata con pomolino - catenaccio in acciaio

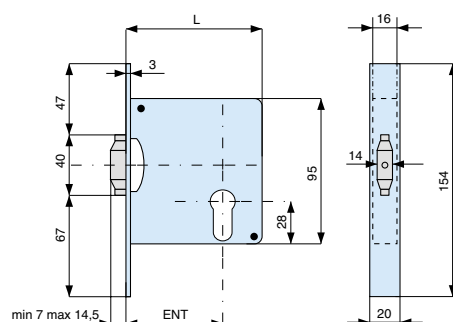
Single throw latch bolt with knob - steel deadbolt



con cilindro with cylinder	frontale forend	codice code ENT	euro	
013.20.0	acciaio zincato zinc plated steel	255350 000	2	50
	acciaio zincato zinc plated steel			
	caten. prolung. ext. deadbolt	255351 000	2	30

### Rullo in ottone con mandata incorporata

Brass single throw roller bolt

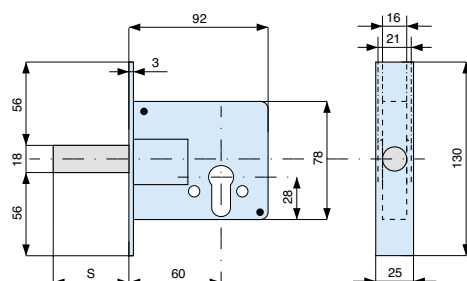


ENT.	40	50	60	70
L	70	80	90	100

con cilindro with cylinder	frontale forend	codice code ENT	euro	
015.56.0	acciaio ottonato brass plat. steel	271400 AL0	2	50
		271500 AL0	2	50
		271600 AL0	2	50
		271700 AL0	2	50
	acc. nichelato nickel plat. steel	271400 AN0	2	50
		271500 AN0	2	50
		271600 AN0	2	50
		271700 AN0	2	50
senza cilindro without cylinder	acciaio ottonato brass plat. steel	271400 AL1	2	50
		271500 AL1	2	50
		271600 AL1	2	50
		271700 AL1	2	50
	acc. nichelato nickel plat. steel	271400 AN1	2	50
		271500 AN1	2	50
		271600 AN1	2	50
		271700 AN1	2	50

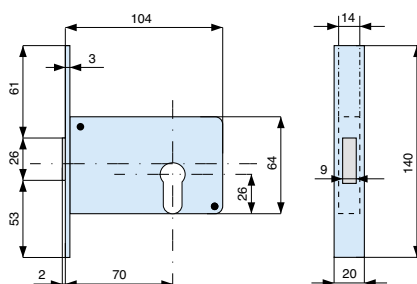
### 2 mandate con perno in acciaio Ø 18


2 throws with steel pivot Ø 18



con cilindro with cylinder	frontale forend	codice code ENT	euro	
015.56.0	acciaio zincato zinc plated steel			
	perno pivot			
	S = 50	273600 000	2	50
	S = 4	273604 000	2	50
senza cilindro without cylinder	acciaio zincato zinc plated steel			
	perno pivot			
	S = 50	273600 001	2	50
	S = 4	273604 001	2	50

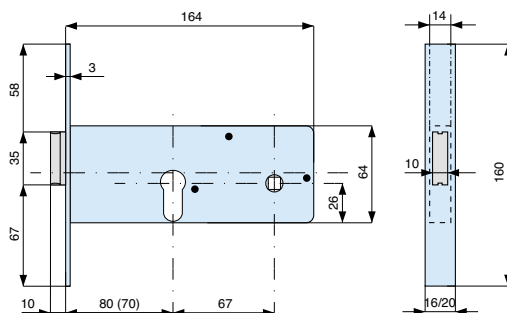
**2 mandate - catenaccio in ottone**  
2 throws - brass deadbolt




con cilindro with cylinder	frontale forend	codice code ENT	euro	
015.56.0				
	acciaio zincato zinc plated steel	282700 000	2	50
senza cilindro without cylinder	acciaio zincato zinc plated steel	282700 001	2	50

**2 mandate e scrocco - catenaccio in ottone**  
2 throws and latch bolt - brass deadbolt

■ mm. 8

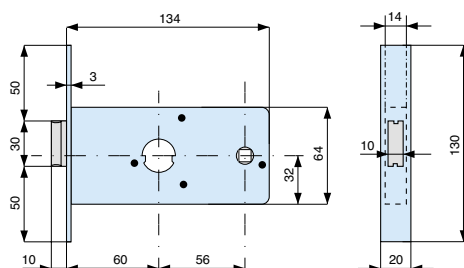




**28370:1 mandata e scrocco**  
1 throw and latch bolt

con cilindro with cylinder	frontale forend	codice code ENT	euro	
015.56.0				
	acciaio zincato zinc plated steel			
	mm. 16	283701 000	2	50
	mm. 20	283702 000	2	50
	mm. 16	283801 000	2	50
	mm. 20	283802 000	2	50
senza cilindro without cylinder	acciaio zincato zinc plated steel			
	mm. 16	283701 001	2	50
	mm. 20	283702 001	2	50
	mm. 16	283801 001	2	50
	mm. 20	283802 001	2	50

**1 mandata e scrocco - catenaccio in ottone**  
Single throw and latch bolt - brass deadbolt

■ mm. 8



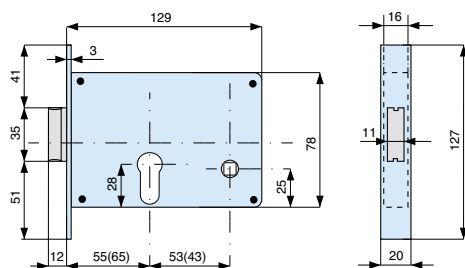
con cilindro with cylinder	frontale forend	codice code ENT	euro	
019.56.0				
	acciaio zincato zinc plated steel	288600 000	2	50
020.52.0				
	acciaio zincato zinc plated steel	288602 000	2	50



### 1 mandata e scrocco - catenaccio in ottone

Single throw and latch bolt - brass deadbolt

■ mm. 8



con cilindro  
with cylinder

frontale  
forend

codice code  
ENT

euro



015.56.0



acciaio zincato  
zinc plated steel

312550 000

2 50

312650 000

2 50

senza cilindro  
without cylinder

acciaio zincato  
zinc plated steel

312550 001

2 50

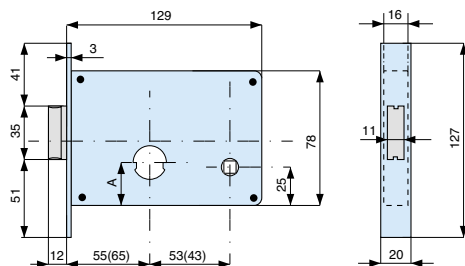
312650 001

2 50

### 1 mandata e scrocco - catenaccio in ottone

Single throw and latch bolt - brass deadbolt

■ mm. 8



A

019.56.0 22,5

020.52.0 27

con cilindro  
with cylinder

frontale  
forend

codice code  
ENT

euro



019.56.0



acciaio zincato  
zinc plated steel

313550 000

2 50

313650 000

2 50

020.52.0



acciaio zincato  
zinc plated steel

313552 000

2 50

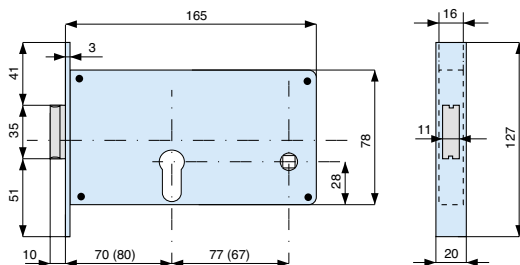
313652 000

2 50

### 2 mandate e scrocco - catenaccio in ottone

2 throws and latch bolt - brass deadbolt

■ mm. 8



con cilindro  
with cylinder

frontale  
forend

codice code  
ENT

euro



015.56.0



acciaio zincato  
zinc plated steel

316700 000

2 50

316800 000

2 50

senza cilindro  
without cylinder

acciaio zincato  
zinc plated steel

316700 001

2 50

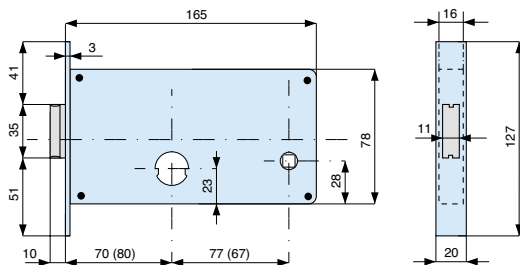
316800 001

2 50

### 2 mandate e scrocco - catenaccio in ottone

2 throws and latch bolt - brass deadbolt

■ mm. 8



con cilindro  
with cylinder

frontale  
forend

codice code  
ENT

euro



019.56.0



acciaio zincato  
zinc plated steel

317700 000

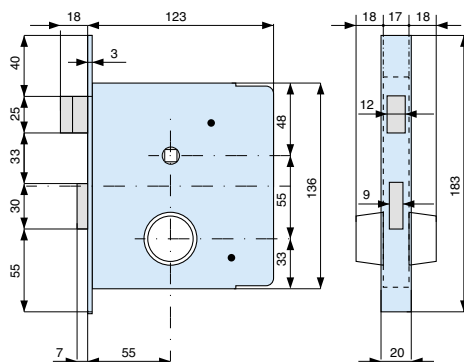
2 50

317800 000

2 50

**2 mandate e scrocco - catenacci in ottone**  
2 throws and latch bolt - brass deadbolts

■ mm. 8



con cilindro  
with cylinder  
013.20.0



frontale  
forend

acciaio zincato  
zinc plated steel

codice code  
ENT

343550 000

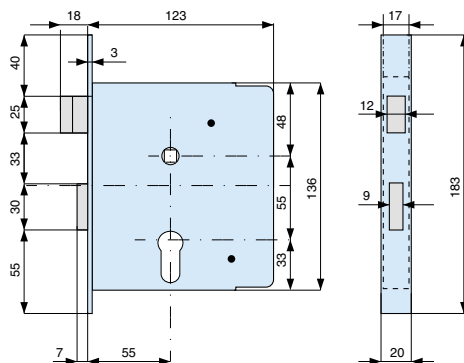
euro



2 30

**2 mandate e scrocco - catenacci in ottone**  
2 throws and latch bolt - brass deadbolts

■ mm. 8



con cilindro  
with cylinder  
015.56.0



frontale  
forend

acciaio zincato  
zinc plated steel

codice code  
ENT

344550 000

euro



2 30

senza cilindro  
without cylinder

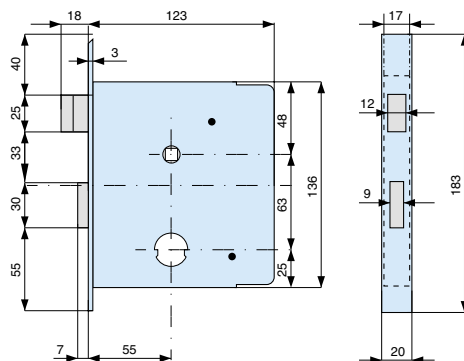
acciaio zincato  
zinc plated steel

344550 001

2 30

**2 mandate e scrocco - catenacci in ottone**  
2 throws and latch bolt - brass deadbolts

■ mm. 8



con cilindro  
with cylinder  
019.56.0



frontale  
forend

acciaio zincato  
zinc plated steel

codice code  
ENT

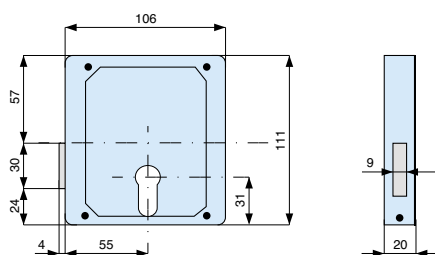
345550 000

euro



2 30

**2 mandate - reversibile - catenaccio in ottone**  
2 throws - reversible - brass deadbolt



**con cilindro**  
with cylinder  
015.56.0



**codice code**  
ENT

euro

424550 000

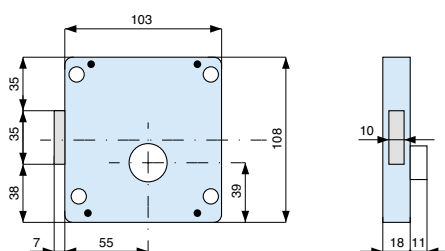
2 50

**senza cilindro**  
without cylinder

424550 001

2 50

**2 mandate - catenaccio in acciaio**  
2 throws - steel deadbolt



**con cilindro**  
with cylinder  
008.11.0



**codice code**  
ENT

euro

destra right

425551 000

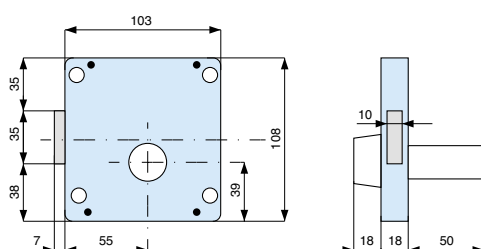
2 50

sinistra left

425552 000

2 50

**2 mandate - catenaccio in acciaio**  
2 throws - steel deadbolt



**con cilindro**  
with cylinder  
014.50.0



**codice code**  
ENT

euro

destra right

426551 000

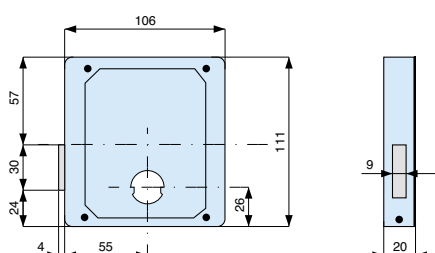
2 48

sinistra left

426552 000

2 48

**2 mandate - reversibile - catenaccio in ottone**  
2 throws - reversible - brass deadbolt



**con cilindro**  
with cylinder  
019.56.0



**codice code**  
ENT

euro

427550 000

2 40

019.80.0

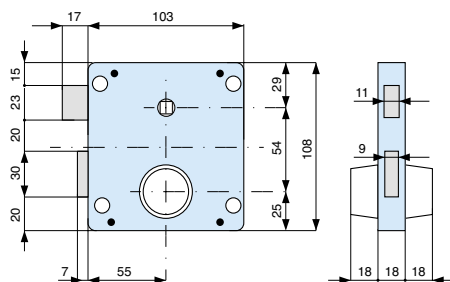


427558 000

2 40

**2 mandate e scrocco reversibile - catenacci in ottone**  
2 throws and reversible latch bolt - brass deadbolts

■ mm. 8



**con cilindro**  
with cylinder

013.20.0



destra right  
sinistra left

**codice code**

ENT

euro



433551 000

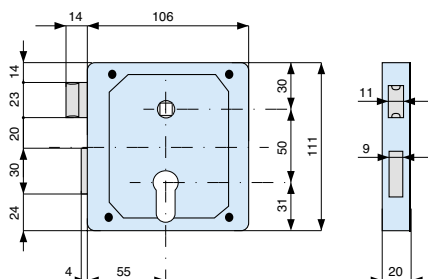
2 50

433552 000

2 50

**2 mandate e scrocco reversibile - catenacci in ottone**  
2 throws and reversible latch bolt - brass deadbolts

■ mm. 8



**con cilindro**  
with cylinder

015.56.0



**senza cilindro**  
without cylinder

**codice code**

ENT

euro



434550 000

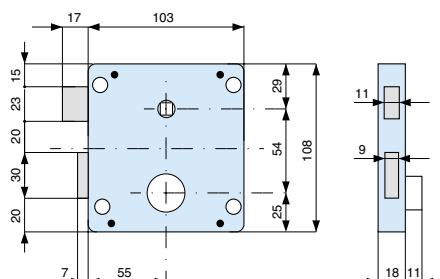
2 50

434550 001

2 50

**2 mandate e scrocco reversibile - catenacci in ottone**  
2 throws and reversible latch bolt - brass deadbolts

■ mm. 8



**con cilindro**  
with cylinder

008.11.0



destra right  
sinistra left

**codice code**

ENT

euro



435551 000

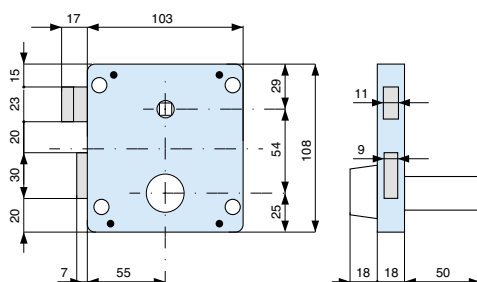
2 50

435552 000

2 50

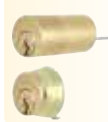
**2 mandate e scrocco reversibile - catenacci in ottone**  
2 throws and reversible latch bolt - brass deadbolts

■ mm. 8



**con cilindro**  
with cylinder

014.50.0



destra right  
sinistra left

**codice code**

ENT

euro



436551 000

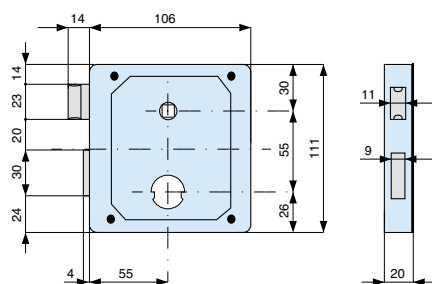
2 48

436552 000

2 48

**2 mandate e scrocco reversibile - catenacci in ottone**  
2 throws and reversible latch bolt - brass deadbolts

■ mm. 8



con cilindro  
with cylinder

019.56.0



019.80.0



codice code

ENT

euro



437550 000

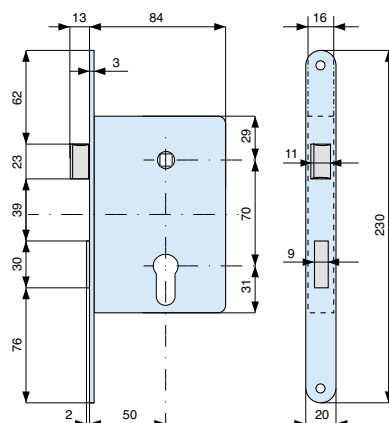
2 40

437558 000

2 40

**2 mandate e scrocco reversibile - catenacci in ottone**  
2 throws and reversible latch bolt - brass deadbolts

■ mm. 8



con cilindro  
with cylinder

015.56.0



frontale  
forend

acciaio zincato  
zinc plated steel

codice code

ENT

euro



461500 000

2 40

senza cilindro  
without cylinder

acciaio zincato  
zinc plated steel

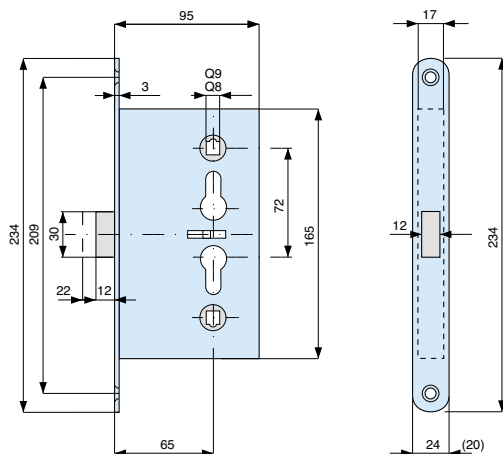
461500 001

2 40

### Una mandata e scrocco - catenaccio in acciaio zincato

Single throw and latch bolt - zinc plated steel deadbolt

■ mm. 8  
■ mm. 9

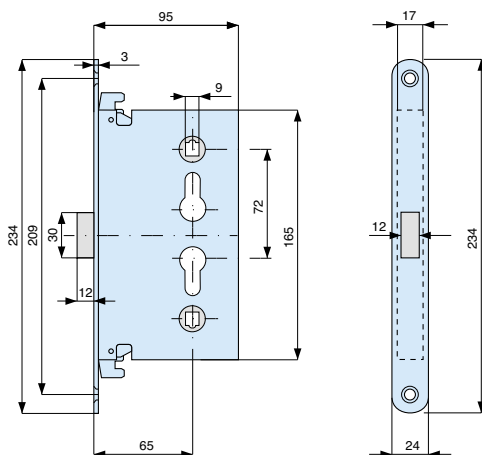


con cilindro with cylinder	frontale forend	codice code ENT	euro	
015.56.0	acciaio zincato zinc plated steel			
	24 Q 9	480650 000	1	40
	24 Q 8	480658 000	1	40
	20 Q 9	480654 000	1	40
	20 Q 8	480656 000	1	40
senza cilindro without cylinder	acciaio zincato zinc plated steel			
	24 Q 9	480650 001	1	40
	24 Q 8	480658 001	1	40
	20 Q 9	480654 001	1	40
	20 Q 8	480656 001	1	40

### Scrocco con disp. di bloccaggio 3 punti di chiusura - caten. in acciaio zincato

Dead-locking latch-bolt three locking points - zinc plated steel deadbolt

■ mm. 9



con cilindro with cylinder	frontale forend	codice code ENT	euro	
015.56.0	acciaio zincato zinc plated steel			
	24 Q 9	482650 000	1	40
senza cilindro without cylinder	acciaio zincato zinc plated steel			
	24 Q 9	482650 001	1	40

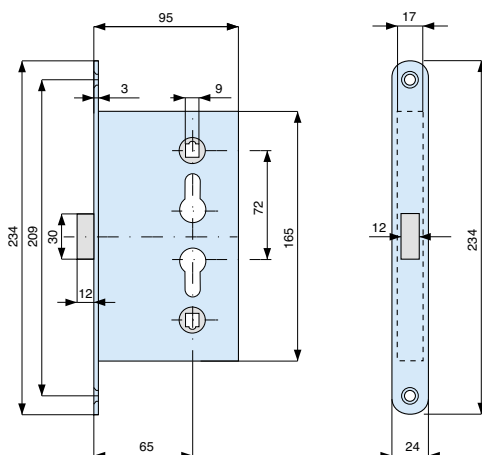


CE

### Antipánico - catenaccio in acciaio zincato

Antipanic - zinc plated steel deadbolt

■ mm. 9



con cilindro with cylinder	frontale forend	codice code ENT	euro	
015.56.0	acciaio zincato zinc plated steel			
	24 Q 9	485650 000	1	40
senza cilindro without cylinder	acciaio zincato zinc plated steel			
	24 Q 9	485650 001	1	40

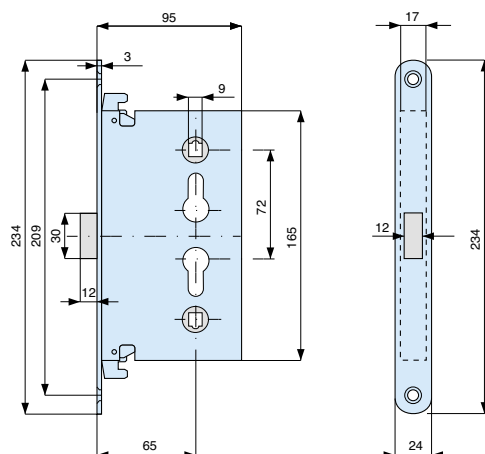



CE

### Antipanico - 3 punti di chiusura - catenaccio in acciaio zincato

Antipanic - three locking points - zinc plated steel deadbolt

■ mm. 9

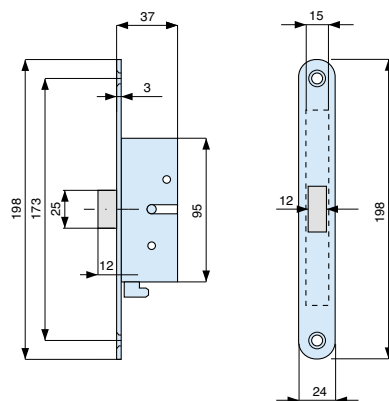


con cilindro with cylinder	frontale forend	codice code ENT	euro	
015.56.0				
	acciaio zincato zinc plated steel 24 Q 9	486650 000	1	40
senza cilindro without cylinder	acciaio zincato zinc plated steel 24 Q 9	486650 001	1	40



### Coppia deviatori per 3 punti di chiusura - catenaccio in acciaio zincato

Deviator set for three locking points - zinc plated steel deadbolt



frontale forend	codice code ENT	euro	
acciaio zincato zinc plated steel 24	489000 001		

**Placche con maniglie e foro cilindro**  
**(da abbinare agli art. 480 - 482 - 485 - 486 Q 9)**  
 Fire resistant plate with handle and cylinder hole  
 (can be combined with art. 480 - 482 - 485 - 486 Q 9)



descrizione description	codice code	euro	
	502001 001	1	10

**Placca esterna con pomolo fisso e foro cilindro**  
 Fire resistant outside plate with fixed knob and cylinder hole



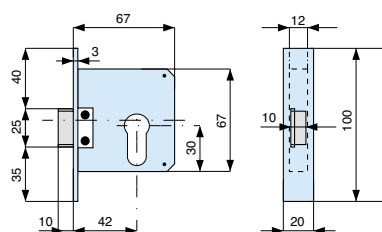
descrizione description	codice code	euro	
	502003 001	1	10





### Solo scrocco reversibile in ottone

Brass reversible latch bolt only



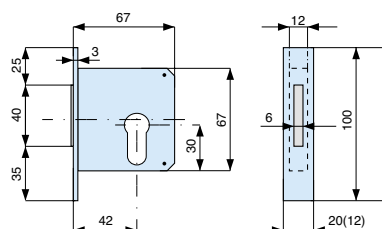
### Cilindro con camma modificata

Cylinder with modified cam

con cilindro with cylinder	frontale forend	codice code ENT	euro	
015.56.0	<b>ottone lucido</b> polished brass	<b>544420 LV0</b>		2
	<b>ottone nichelato</b> nickel plat. brass	<b>544420 LN0</b>		2

### 2 mandate - catenaccio in ottone

2 throws - brass deadbolt



### Cilindro con camma modificata

Cylinder with modified cam

con cilindro with cylinder	frontale forend	codice code ENT	euro	
015.56.0	<b>ottone lucido</b> polished brass			
	mm. 12	<b>545421 LV0</b>		2
	mm. 20	<b>545422 LV0</b>		2
	<b>ottone nichelato</b> nickel plat. brass			
	mm. 12	<b>545421 LN0</b>		2
	mm. 20	<b>545422 LN0</b>		2

- **SERRATURE PER PORTE SCORREVOLI**  
LOCKS FOR SLIDING DOORS



P. 90

- **SERRATURE DA INFILARE**  
**PER CANCELLI SCORREVOLI**  
MORTICE LOCKS  
FOR SLIDING GATES



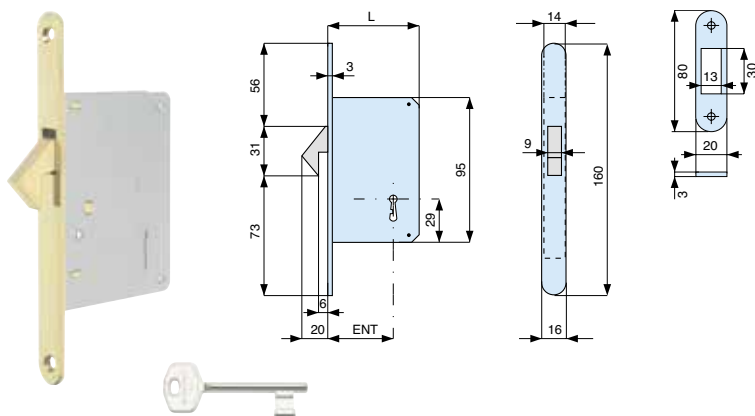
P. 94

- **SERRATURE PER SERRANDE**  
ROLLING GATE LOCKS



P. 98

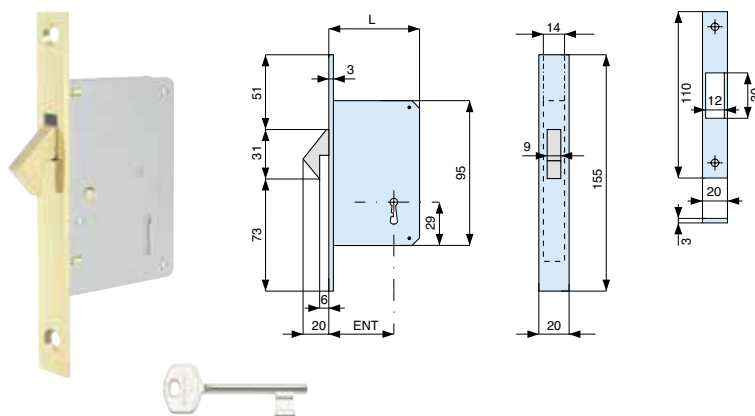
### Gancio rientrante in ottone con 1 chiave K01 Brass hook bolt with 1 key K01



frontale forend	codice code ENT	euro	
acciaio ottonato brass plat. steel	551401 AL1	4	
	551501 AL1	4	
	551601 AL1	4	
	551701 AL1	4	

ENT.	40	50	60	70
L	60	70	80	90

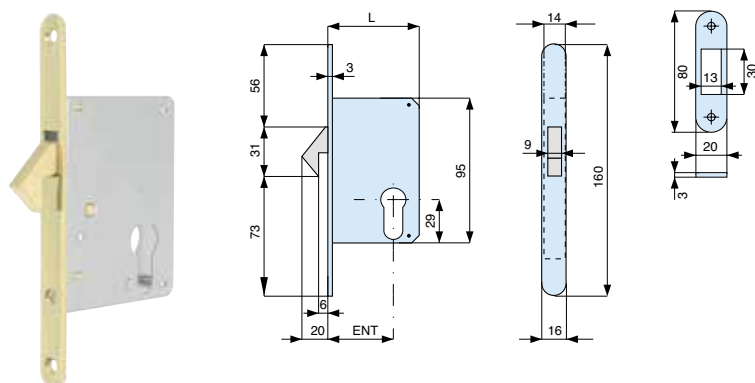
### Gancio rientrante in ottone con 1 chiave K01 Brass hook bolt with 1 key K01



frontale forend	codice code ENT	euro	
acciaio ottonato brass plat. steel	551402 AL1	4	
	551502 AL1	4	
	551602 AL1	4	
	551702 AL1	4	

ENT.	40	50	60	70
L	60	70	80	90

### Gancio rientrante in ottone Brass hook bolt

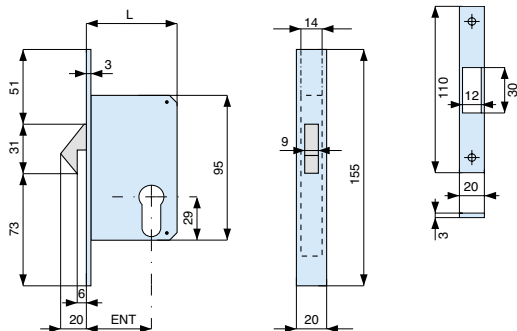



con cilindro with cylinder	frontale forend	codice code ENT	euro	
015.56.0	acciaio ottonato brass plat. steel	552401 AL0	2	
		552501 AL0	2	
		552601 AL0	2	
		552701 AL0	2	
senza cilindro without cylinder	acciaio ottonato brass plat. steel	552401 AL1	2	
		552501 AL1	2	
		552601 AL1	2	
		552701 AL1	2	

ENT.	40	50	60	70
L	60	70	80	90

### Gancio rientrante in ottone

Brass hook bolt



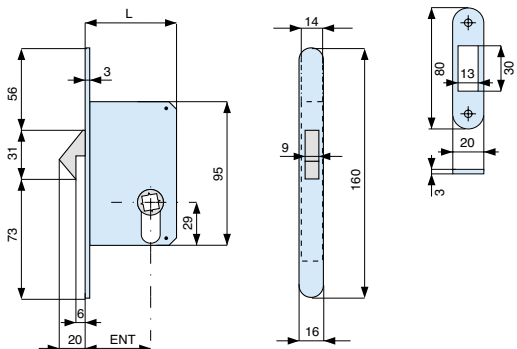
con cilindro with cylinder	frontale forend	codice code ENT	euro	
015.56.0 	acciaio ottonato brass plat. steel	552402 AL0	2	
		552502 AL0	2	
		552602 AL0	2	
		552702 AL0	2	
senza cilindro without cylinder	acciaio ottonato brass plat. steel	552402 AL1	2	
		552502 AL1	2	
		552602 AL1	2	
		552702 AL1	2	

ENT.	40	50	60	70
L	60	70	80	90

### Gancio rientrante in ottone

Brass hook bolt

■ mm. 8



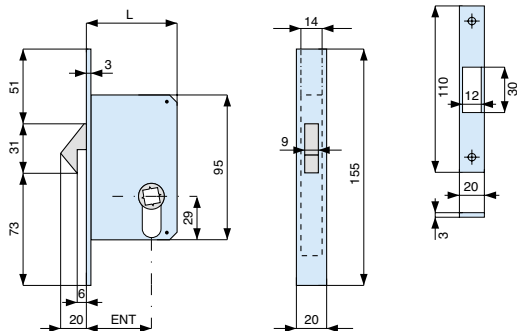
frontale forend	codice code ENT	euro	
acciaio ottonato brass plat. steel	553401 AL1	2	
	553501 AL1	2	
	553601 AL1	2	
	553701 AL1	2	

ENT.	40	50	60	70
L	60	70	80	90

### Gancio rientrante in ottone

Brass hook bolt

■ mm. 8



frontale forend	codice code ENT	euro	
acciaio ottonato brass plat. steel	553402 AL1	2	
	553502 AL1	2	
	553602 AL1	2	
	553702 AL1	2	

ENT.	40	50	60	70
L	60	70	80	90

### Placca incasso tonda - WC Q. 8

Round plate - WC Q. 8



finiture finishing	codice code	euro	
<b>ottone lucido</b> polished brass	<b>554001 LV1</b>	1	
<b>ottone cromo lucido</b> polished chrome brass	<b>554001 CL1</b>	1	
<b>ottone cromo satinato</b> satin chrome brass	<b>554001 CS1</b>	1	

### Ditale di trascinamento

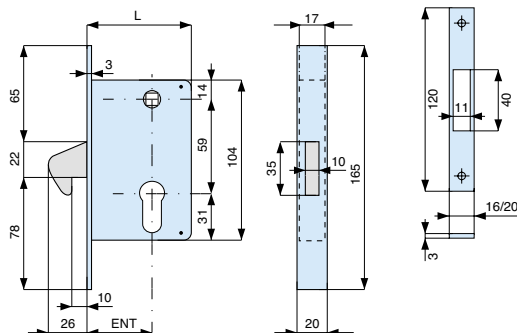
Dragging thimble



finiture finishing	codice code	euro	
<b>ottone lucido</b> polished brass	<b>554009 LV1</b>	1	
<b>ottone cromo lucido</b> polished chrome brass	<b>554009 CL1</b>	1	
<b>ottone cromo satinato</b> satin chrome brass	<b>554009 CS1</b>	1	

### Gancio sporgente

Hook bolt

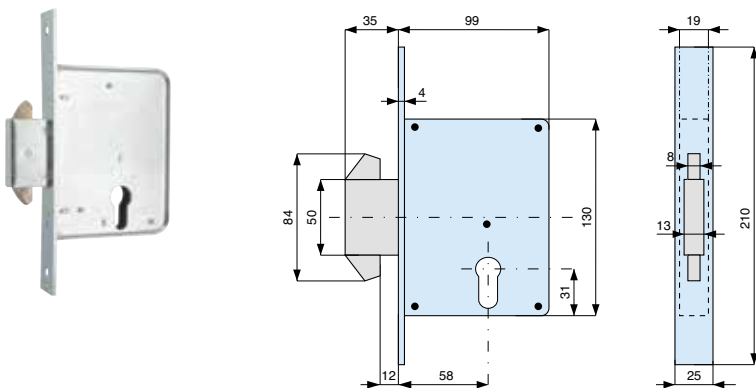



con cilindro with cylinder	frontale forend	codice code ENT	euro	
015.56.0 	<b>acciaio ottonato</b> brass plat. steel	<b>555300 AL0</b>	2	
		<b>555400 AL0</b>	2	
		<b>555500 AL0</b>	2	
		<b>555600 AL0</b>	2	
		<b>555700 AL0</b>	2	
	<b>acc. nichelato</b> nickel plat. steel	<b>555300 AN0</b>	2	
		<b>555400 AN0</b>	2	
		<b>555500 AN0</b>	2	
		<b>555600 AN0</b>	2	
		<b>555700 AN0</b>	2	
senza cilindro without cylinder	<b>acciaio ottonato</b> brass plat. steel	<b>555300 AL1</b>	2	
		<b>555400 AL1</b>	2	
		<b>555500 AL1</b>	2	
		<b>555600 AL1</b>	2	
		<b>555700 AL1</b>	2	
	<b>acc. nichelato</b> nickel plat. steel	<b>555300 AN1</b>	2	
		<b>555400 AN1</b>	2	
		<b>555500 AN1</b>	2	
		<b>555600 AN1</b>	2	
		<b>555700 AN1</b>	2	

ENT.	30	40	50	60	70
L	59	69	79	89	99

### Doppio gancio rientrante in ottone - 3 mandate

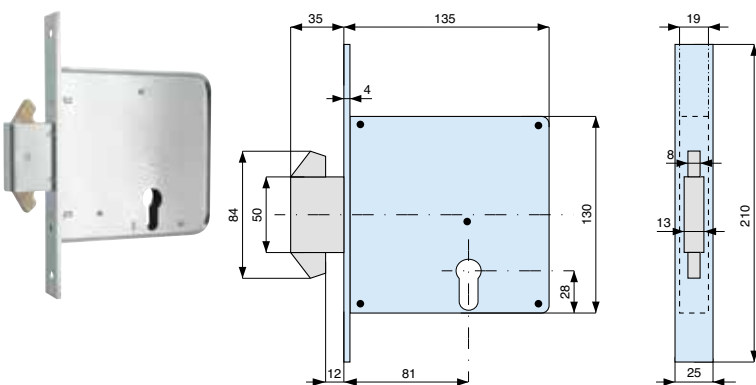
Brass double re-entering hook bolt - 3 throws




con cilindro with cylinder	frontale forend	codice code ENT	euro	
015.56.0				
	acciaio zincato zinc plated steel	561580 000	2	24
senza cilindro without cylinder	acciaio zincato zinc plated steel	561580 001	2	24

### Doppio gancio rientrante in ottone - 3 mandate

Brass double re-entering hook bolt - 3 throws

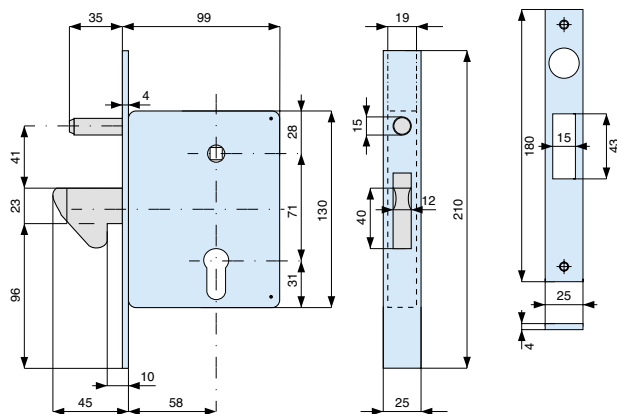



con cilindro with cylinder	frontale forend	codice code ENT	euro	
015.56.0				
	acciaio zincato zinc plated steel	562810 000	2	24
senza cilindro without cylinder	acciaio zincato zinc plated steel	562810 001	2	24

### Gancio sporgente in acciaio zincato - completa di contropiastra 065

Zinc plated steel hook bolt - provided with striking plate 065

■ mm. 8

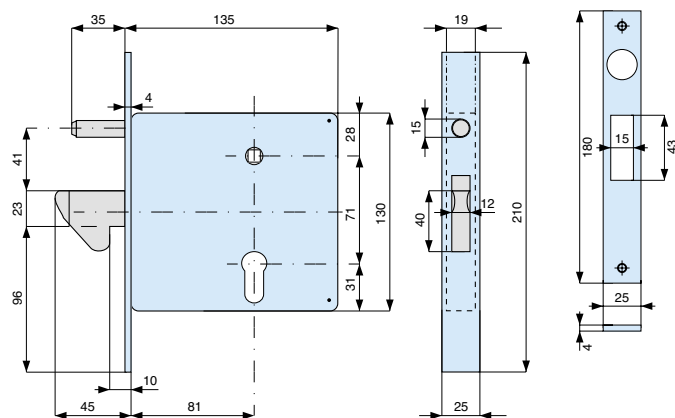



con cilindro with cylinder	frontale forend	codice code ENT	euro	
015.56.0				
	acciaio zincato zinc plated steel	566580 000	2	24
senza cilindro without cylinder	acciaio zincato zinc plated steel	566580 001	2	24

### Gancio sporgente in acciaio zincato - completa di contropiastra 065

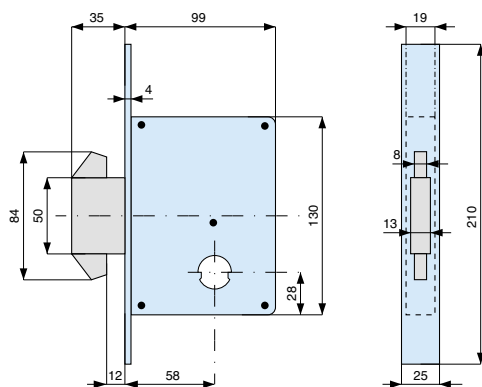
Zinc plated steel hook bolt - provided with striking plate 065

■ mm. 8



con cilindro with cylinder	frontale forend	codice code ENT	euro	
015.56.0				
	acciaio zincato zinc plated steel	568810 000	2	24
senza cilindro without cylinder	acciaio zincato zinc plated steel	568810 001	2	24

**Doppio gancio rientrante in ottone - 3 mandate**  
Brass double re-entering hook bolt - 3 throws



con cilindro  
with cylinder  
019.56.0

frontale  
forend

codice code  
ENT

euro

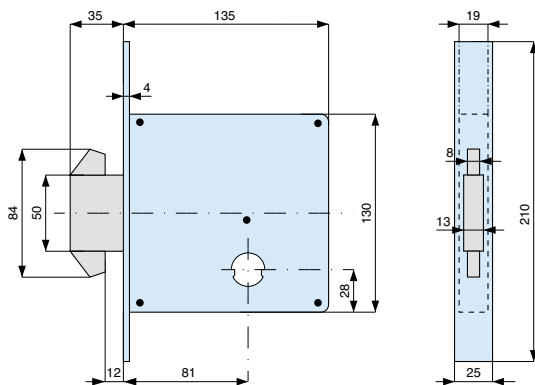


acciaio zincato  
zinc plated steel

571580 000

2 24

**Doppio gancio rientrante in ottone - 3 mandate**  
Brass double re-entering hook bolt - 3 throws



con cilindro  
with cylinder  
019.56.0

frontale  
forend

codice code  
ENT

euro



acciaio zincato  
zinc plated steel

572810 000

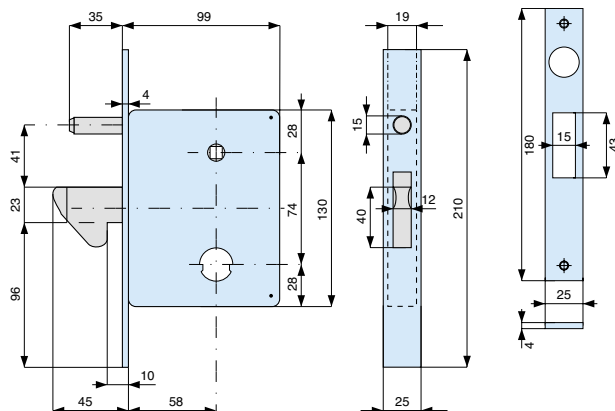
2 24



### Gancio sporgente in acciaio zincato - completa di contropiastra 065

Zinc plated steel hook bolt - provided with striking plates 065

■ mm. 8



con cilindro  
with cylinder  
019.56.0

frontale  
forend

codice code  
ENT

euro



acciaio zincato  
zinc plated steel

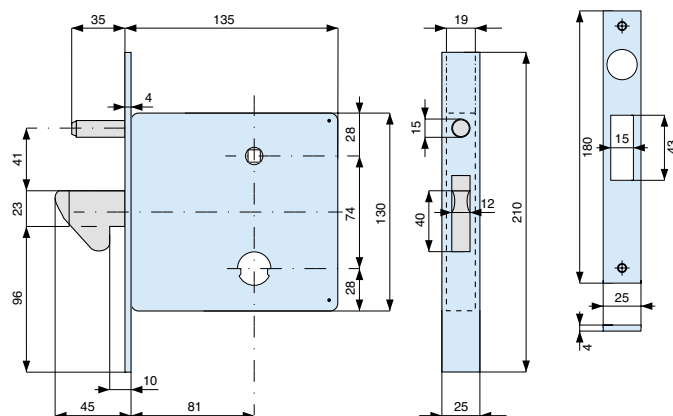
573580 000

2 24

### Gancio sporgente in acciaio zincato - completa di contropiastra 065

Zinc plated steel hook bolt - provided with striking plates 065

■ mm. 8



con cilindro  
with cylinder  
019.56.0

frontale  
forend

codice code  
ENT

euro



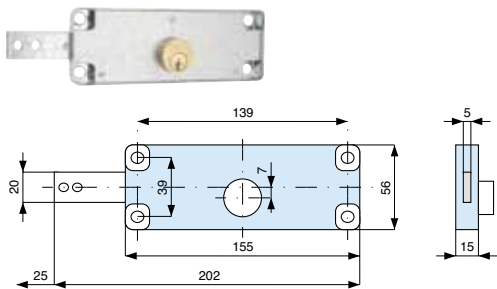
acciaio zincato  
zinc plated steel

574810 000

2 24

### Destra - catenaccio in acciaio zincato

Right - zinc plated steel deadbolt



### con cilindro

with cylinder

008.11.0



### codice code

ENT

euro

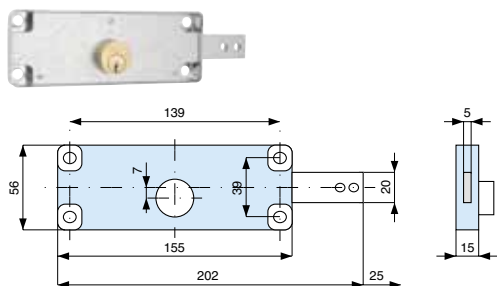


601001 000

2 50

### Sinistra - catenaccio in acciaio zincato

Left - zinc plated steel deadbolt



### con cilindro

with cylinder

008.11.0



### codice code

ENT

euro

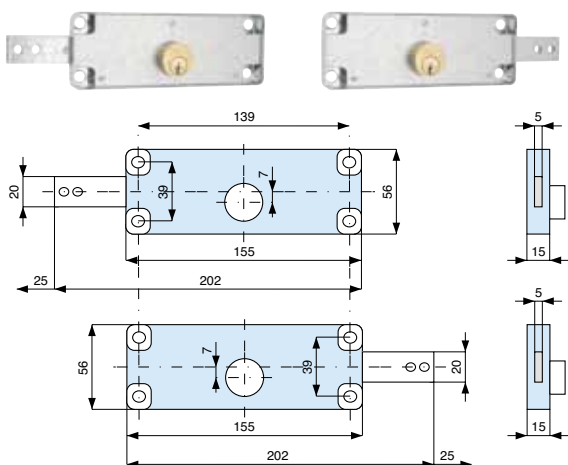


601002 000

2 50

### Coppia serrature chiave uguale (1 dx + 1 sx) - catenaccio in acciaio zincato

Lock sets (1 right + 1 left) KA - zinc plated steel deadbolt



### con cilindro

with cylinder

008.11.0



### codice code

ENT

euro

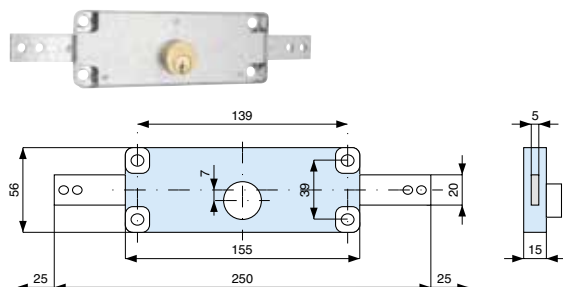


601003 000

1 25

### Centrale - catenaccio in acciaio zincato

Central - zinc plated steel deadbolt



### con cilindro

with cylinder

008.11.0



### codice code

ENT

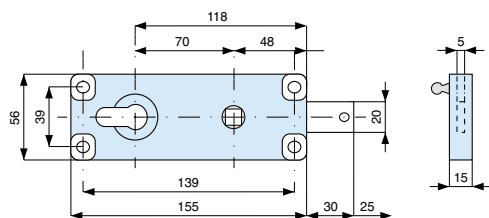
euro



602000 000

1 50

**1 mandata - entrata mm. 70 - catenaccio in acciaio zincato**  
1 throw - backset mm. 70 - zinc plated steel deadbolt

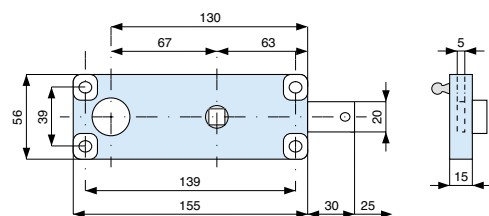


**cilindro  
da ordinare  
a parte**  
cylinder  
to be ordered  
separately

codice code ENT	euro	
610000 001	2 50	

**1 mandata - entrata mm. 130 - catenaccio in acciaio zincato**  
1 throw - backset mm. 130 - zinc plated steel deadbolt

■ mm. 8

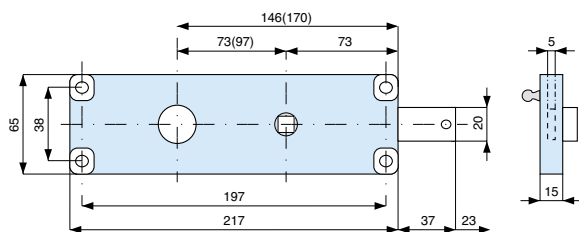


**con cilindro  
with cylinder**

codice code ENT	euro	
010.18.0	611130 000	2 50
010.28.0	611133 000	2 50
012.40.0	611134 000	2 50
012.50.0	611135 000	2 50
012.60.0	611136 000	2 50
012.70.0	611137 000	2 50
012.80.0	611138 000	2 50

**1 mandata - catenaccio in acciaio zincato**  
1 throw - zinc plated steel deadbolt

■ mm. 8



**cilindro  
with cylinder**

**entrata  
backset**

codice code ENT	euro	
010.18.0		
mm. 146	612140 000	1 50
mm. 170	612170 000	1 50

■ **FERROGLIETTI**  
MULTI THROW LOCKS



P. 102

■ **SERRATURE DA INFILARE**  
MORTICE LOCKS

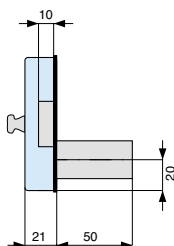
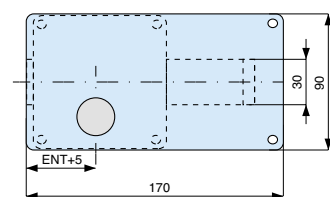
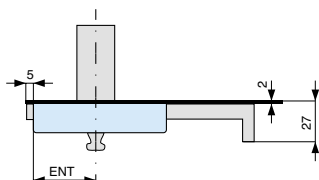




P. 104

#### 4 mandate - pomolo interno - catenaccio in acciaio zincato 4 throws - inside knob - zinc plated steel deadbolt



**Complete di contropiastra e borchia in ottone**  
Provided with striking plate and brass rose



con cilindro with cylinder	codice code ENT	euro	
011.00.0			
	701400 000	2	24
	701500 000	2	24
			
012.35.0	702403 000	2	24
012.40.0	702404 000	2	24
012.50.0	702405 000	2	24
012.60.0	702406 000	2	24
012.70.0	702407 000	2	24
012.35.0	702503 000	2	24
012.40.0	702504 000	2	24
012.50.0	702505 000	2	24
012.60.0	702506 000	2	24
012.70.0	702507 000	2	24

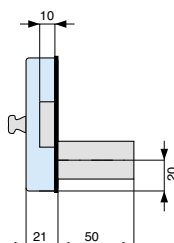
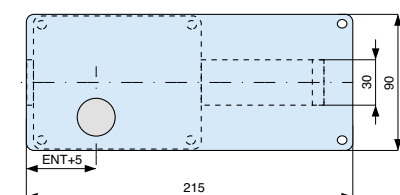
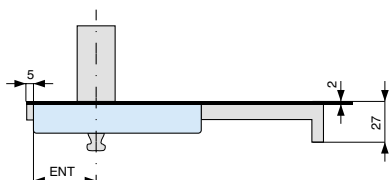
**versione "industriale" con borchia senza contropiastra**  
industrial type with rose without striking plate



012.50.0	702505 006	24
----------	------------	----

#### 6 mandate - pomolo interno - catenaccio in acciaio zincato 6 throws - inside knob - zinc plated steel deadbolt



**Complete di contropiastra e borchia in ottone**  
Provided with striking plate and brass rose



con cilindro with cylinder	codice code ENT	euro	
011.00.0			
	711400 000	2	24
	711500 000	2	24
	711600 000	2	24
			
012.35.0	712403 000	2	24
012.40.0	712404 000	2	24
012.50.0	712405 000	2	24
012.60.0	712406 000	2	24
012.70.0	712407 000	2	24
012.35.0	712503 000	2	24
012.40.0	712504 000	2	24
012.50.0	712505 000	2	24
012.60.0	712506 000	2	24
012.70.0	712507 000	2	24
012.35.0	712603 000	2	24
012.40.0	712604 000	2	24
012.50.0	712605 000	2	24
012.60.0	712606 000	2	24
012.70.0	712607 000	2	24

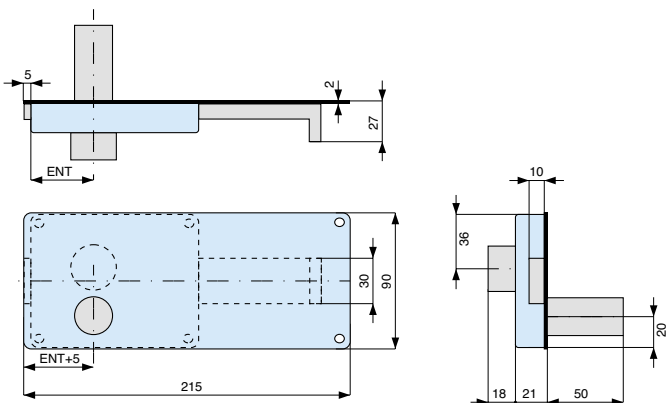
**versione "industriale" con borchia senza contropiastra**  
industrial type with rose without striking plate

012.50.0	712505 006	24
----------	------------	----

**6 mandate - cil. interno 010.18.0 cil. esterno 012.50.0 - cat. in acciaio zincato**  
 6 throws - inside cylinder 010.18.0 outside cyl. 012.50.0 - zinc plated steel deadbolt



**Complete di contropiastra e borchia in ottone**  
 Provided with striking plate and brass rose



**con cilindro**  
 with cylinder



**codice code**  
 ENT

**euro**



**713505 000**

2 24

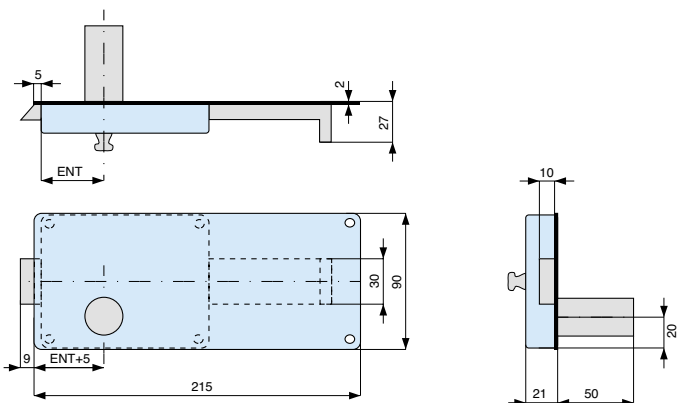
**713605 000**

2 24

**5 1/2 mandate - pomolo interno - catenaccio in acciaio zincato**  
 5 1/2 throws - inside knob - zinc plated steel deadbolt



**Complete di contropiastra e borchia in ottone**  
 Provided with striking plate and brass rose



**con cilindro**  
 with cylinder

011.00.0



**codice code**  
 ENT

**euro**



**714500 000**

2 24

**714600 000**

2 24



012.50.0

**715505 000**

2 24

012.50.0

**715605 000**

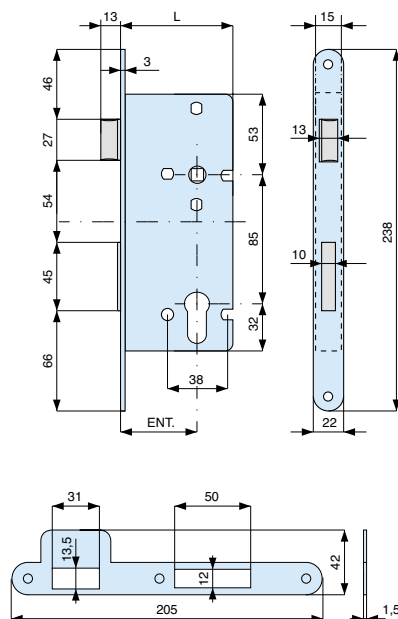
2 24

**FERROGLIETTI DA APPLICARE**  
 multi throw rim locks

## 2 mandate e scrocco reversibile - catenacci in ottone

2 throws and reversible latch bolt - brass deadbolts

■ mm. 8



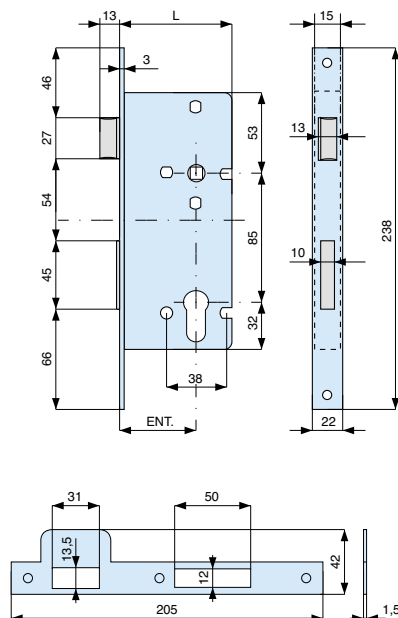
ENT.	40	45	50	60	70	80
L	64	69	74	84	94	104

frontale forend	codice code ENT	euro	
<b>cilindro da ordinare a parte</b> cylinder to be ordered separately	<b>acc. ott. vern.</b> brass pl. steel		
	740401 AL1	1	40
	740451 AL1	1	40
	740501 AL1	1	40
	740601 AL1	1	40
	740701 AL1	1	40
	740801 AL1	1	40
	<b>acc. nichelato</b> nickel pl. steel	740	AN1
	<b>acc. cromo luc.</b> pol. chr. steel	740	AC1
	<b>acc. cromo sat.</b> satin chr. steel	740	AS1
	<b>acc. bronzato</b> bronze steel	740	AB1
	<b>acc. inox</b> stainless steel	740	AX1
	<b>ottone luc. vern.</b> polished brass	740	LV1
	<b>ottone nichelato</b> nickel pl. brass	740	LN1
	<b>ottone cromo luc.</b> pol. chr. brass	740	CL1
	<b>ottone cromo sat.</b> satin chr. brass	740	CS1
	<b>ottone bronzato</b> bronze brass	740	LB1

## 2 mandate e scrocco reversibile - catenacci in ottone

2 throws and reversible latch bol - brass deadbolts

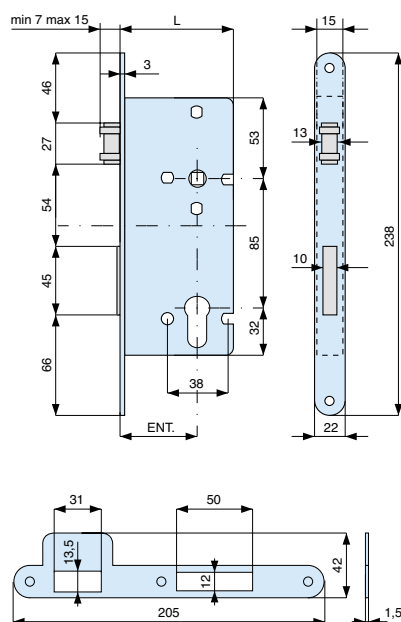
■ mm. 8



ENT.	40	45	50	60	70	80
L	64	69	74	84	94	104

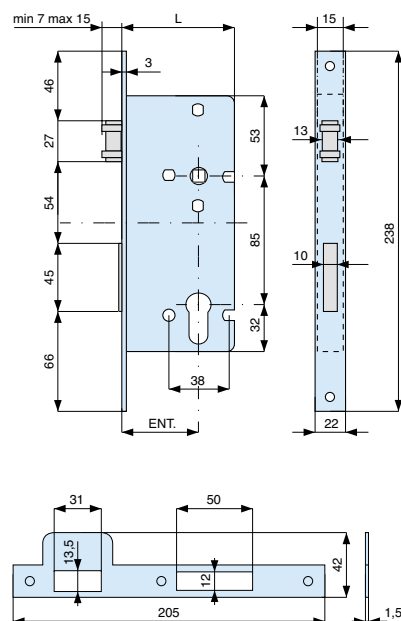
frontale forend	codice code ENT	euro	
<b>cilindro da ordinare a parte</b> cylinder to be ordered separately	<b>acc. ott. vern.</b> brass pl. steel		
	740402 AL1	1	40
	740452 AL1	1	40
	740502 AL1	1	40
	740602 AL1	1	40
	740702 AL1	1	40
	740802 AL1	1	40
	<b>acc. nichelato</b> nickel pl. steel	740	AN1
	<b>acc. cromo luc.</b> pol. chr. steel	740	AC1
	<b>acc. cromo sat.</b> satin chr. steel	740	AS1
	<b>acc. bronzato</b> bronze steel	740	AB1
	<b>acc. inox</b> stainless steel	740	AX1
	<b>ottone luc. vern.</b> polished brass	740	LV1
	<b>ottone nichelato</b> nickel pl. brass	740	LN1
	<b>ottone cromo luc.</b> pol. chr. brass	740	CL1
	<b>ottone cromo sat.</b> satin chr. brass	740	CS1
	<b>ottone bronzato</b> bronze brass	740	LB1

**2 mandate e rullo separato - catenacci in ottone**  
2 throws and separate roller bolt - brass deadbolts



ENT.	40	45	50	60	70	80
L	64	69	74	84	94	104

**2 mandate e rullo separato - catenacci in ottone**  
2 throws and separate roller bolt - brass deadbolts



ENT.	40	45	50	60	70	80
L	64	69	74	84	94	104

frontale forend	codice code ENT	euro	
<b>cilindro da ordinare a parte</b> cylinder to be ordered separately	<b>acc. ott. vern.</b> brass pl. steel		
	741401 AL1	1	40
	741451 AL1	1	40
	741501 AL1	1	40
	741601 AL1	1	40
	741701 AL1	1	40
	741801 AL1	1	40
	<b>acc. nichelato</b> nickel pl. steel	741	AN1
	<b>acc. cromo luc.</b> pol. chr. steel	741	AC1
	<b>acc. cromo sat.</b> satin chr. steel	741	AS1
	<b>acc. bronzato</b> bronze steel	741	AB1
	<b>acc. inox</b> stainless steel	741	AX1
	<b>ottone luc. vern.</b> polished brass	741	LV1
	<b>ottone nichelato</b> nickel pl. brass	741	LN1
	<b>ottone cromo luc.</b> pol. chr. brass	741	CL1
	<b>ottone cromo sat.</b> satin chr. brass	741	CS1
	<b>ottone bronzato</b> bronze brass	741	LB1

frontale forend	codice code ENT	euro	
<b>cilindro da ordinare a parte</b> cylinder to be ordered separately	<b>acc. ott. vern.</b> brass pl. steel		
	741402 AL1	1	40
	741452 AL1	1	40
	741502 AL1	1	40
	741602 AL1	1	40
	741702 AL1	1	40
	741802 AL1	1	40
	<b>acc. nichelato</b> nickel pl. steel	741	AN1
	<b>acc. cromo luc.</b> pol. chr. steel	741	AC1
	<b>acc. cromo sat.</b> satin chr. steel	741	AS1
	<b>acc. bronzato</b> bronze steel	741	AB1
	<b>acc. inox</b> stainless steel	741	AX1
	<b>ottone luc. vern.</b> polished brass	741	LV1
	<b>ottone nichelato</b> nickel pl. brass	741	LN1
	<b>ottone cromo luc.</b> pol. chr. brass	741	CL1
	<b>ottone cromo sat.</b> satin chr. brass	741	CS1
	<b>ottone bronzato</b> bronze brass	741	LB1

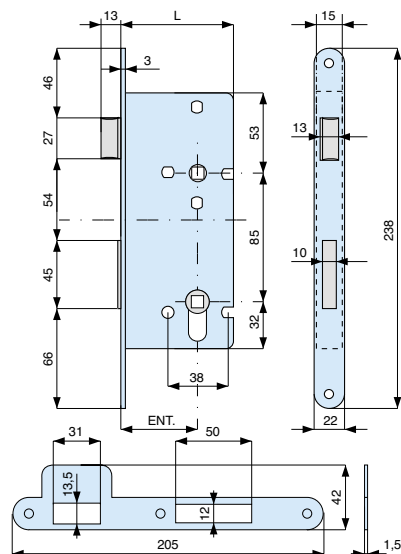


# 1 mandata e scrocco reversibile - catenacci in ottone

1 throw and reversible latch bolt - brass deadbolts

Doppio quadro ■ mm. 8 per bagno

Double square hole ■ mm. 8 for bathroom



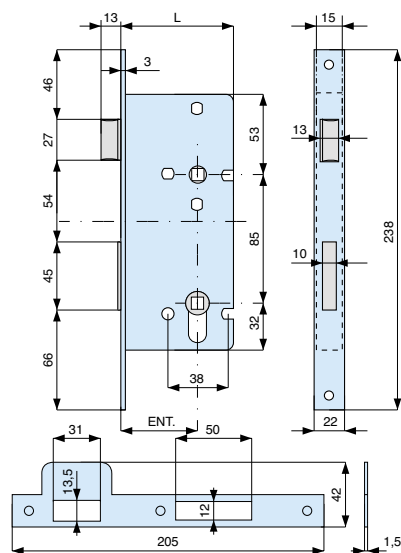
ENT.	40	45	50	60	70	80
L	64	69	74	84	94	104

# 1 mandata e scrocco reversibile - catenacci in ottone

1 throw and reversible latch bolt - brass deadbolts

Doppio quadro ■ mm. 8 per bagno

Double square hole ■ mm. 8 for bathroom



ENT.	40	45	50	60	70	80
L	64	69	74	84	94	104

frontale  
forend

codice code  
ENT

euro



**cilindro  
da ordinare  
a parte**  
cylinder  
to be ordered  
separately

**acc. ott. vern.**  
brass pl. steel

742401	AL1	1	40
742451	AL1	1	40
742501	AL1	1	40
742601	AL1	1	40
742701	AL1	1	40
742801	AL1	1	40

**acc. nichelato**  
nickel pl. steel

742	AN1	1	40
-----	-----	---	----

**acc. cromo luc.**  
pol. chr. steel

742	AC1	1	40
-----	-----	---	----

**acc. cromo sat.**  
satin chr. steel

742	AS1	1	40
-----	-----	---	----

**acc. bronzato**  
bronze steel

742	AB1	1	40
-----	-----	---	----

**acc. inox**  
stainless steel

742	AX1	1	40
-----	-----	---	----

**ottone luc. vern.**  
polished brass

742	LV1	1	40
-----	-----	---	----

**ottone nichelato**  
nickel pl. brass

742	LN1	1	40
-----	-----	---	----

**ottone cromo luc.**  
pol. chr. brass

742	CL1	1	40
-----	-----	---	----

**ottone cromo sat.**  
satin chr. brass

742	CS1	1	40
-----	-----	---	----

**ottone bronzato**  
bronze brass

742	LB1	1	40
-----	-----	---	----

frontale  
forend

codice code  
ENT

euro



**cilindro  
da ordinare  
a parte**  
cylinder  
to be ordered  
separately

**acc. ott. vern.**  
brass pl. steel

742402	AL1	1	40
742452	AL1	1	40
742502	AL1	1	40
742602	AL1	1	40
742702	AL1	1	40
742802	AL1	1	40

**acc. nichelato**  
nickel pl. steel

742	AN1	1	40
-----	-----	---	----

**acc. cromo luc.**  
pol. chr. steel

742	AC1	1	40
-----	-----	---	----

**acc. cromo sat.**  
satin chr. steel

742	AS1	1	40
-----	-----	---	----

**acc. bronzato**  
bronze steel

742	AB1	1	40
-----	-----	---	----

**acc. inox**  
stainless steel

742	AX1	1	40
-----	-----	---	----

**ottone luc. vern.**  
polished brass

742	LV1	1	40
-----	-----	---	----

**ottone nichelato**  
nickel pl. brass

742	LN1	1	40
-----	-----	---	----

**ottone cromo luc.**  
pol. chr. brass

742	CL1	1	40
-----	-----	---	----

**ottone cromo sat.**  
satin chr. brass

742	CS1	1	40
-----	-----	---	----

**ottone bronzato**  
bronze brass

742	LB1	1	40
-----	-----	---	----

- **SERRATURE DA INFILARE PER FASCE**  
MORTICE LOCKS FOR METAL DOORS



P. 108

- **SERRATURE DA INFILARE PER MONTANTI**  
MORTICE LOCKS FOR METAL DOORS



P. 112

- **SERRATURE MULTIPUNTO**  
MULTI-POINT LOCKS



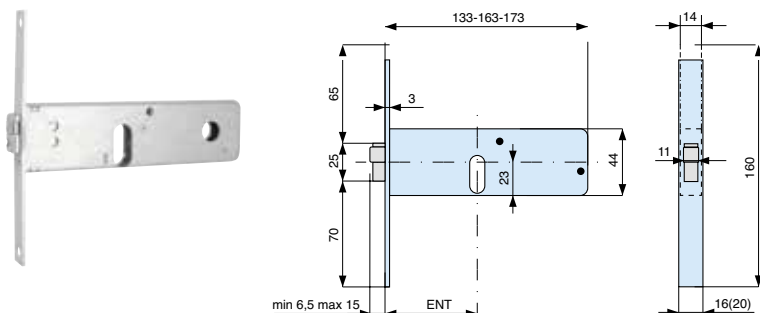
P. 123

- **INCONTRI ELETTRICI PER SERRATURE  
DA INFILARE**  
ELECTRIC DOOR OPENERS  
FOR MORTICE LOCKS



P. 127

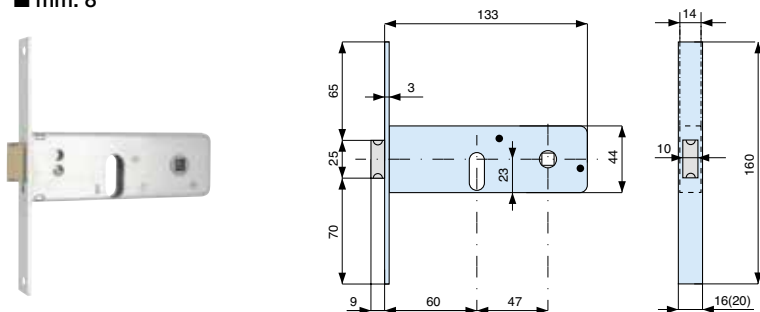
**2 mandate con rullo regolabile**  
2 throws with adjustable roller bolt



con cilindro with cylinder	frontale forend	codice code ENT	euro	
018.56.0	acciaio zincato zinc plated steel			
	mm. 16	797601 000	2 50	
	mm. 20	797602 000	2 50	
	mm. 16	797701 000	2 50	
	mm. 20	797702 000	2 50	
	mm. 16	797801 000	2 50	
	mm. 20	797802 000	2 50	

**2 mandate e scrocco - catenaccio in ottone**  
2 throws and latch bolt - brass deadbolt

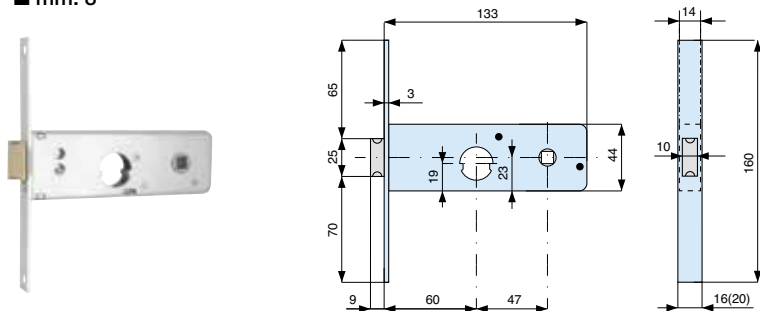
■ mm. 8



con cilindro with cylinder	frontale forend	codice code ENT	euro	
018.56.0	acciaio zincato zinc plated steel			
	mm. 16	800601 000	2 50	
	mm. 20	800602 000	2 50	
	acciaio inox stainless steel			
	mm. 16	800601 AX0	2 50	
	mm. 20	800602 AX0	2 50	

**2 mandate e scrocco - catenaccio in ottone**  
2 throws and latch bolt - brass deadbolt

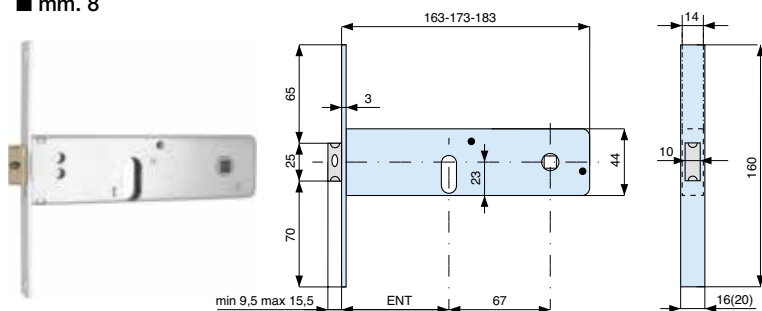
■ mm. 8




con cilindro with cylinder	frontale forend	codice code ENT	euro	
020.52.0	acciaio zincato zinc plated steel			
	mm. 16	801601 000	2 50	
	mm. 20	801602 000	2 50	

**2 mandate e scrocco regolabile**  
2 throws and adjustable latch bolt

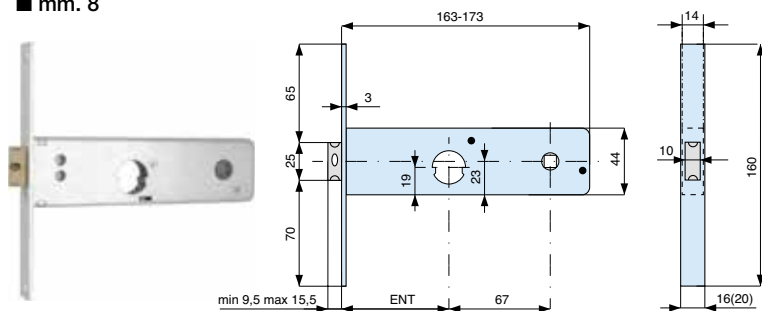
■ mm. 8




con cilindro with cylinder	frontale forend	codice code ENT	euro	
018.56.0				
	<b>acciaio zincato</b> zinc plated steel			
	mm. 16	<b>802701 000</b>	2 50	
	mm. 20	<b>802702 000</b>	2 50	
	mm. 16	<b>802801 000</b>	2 50	
	mm. 20	<b>802802 000</b>	2 50	
	mm. 16	<b>802901 000</b>	2 50	
	mm. 20	<b>802902 000</b>	2 50	
	<b>acciaio inox</b> stainless steel			
	mm. 16	<b>802701 AX0</b>	2 50	
	mm. 20	<b>802702 AX0</b>	2 50	

**2 mandate e scrocco regolabile**  
2 throws and adjustable latch bolt

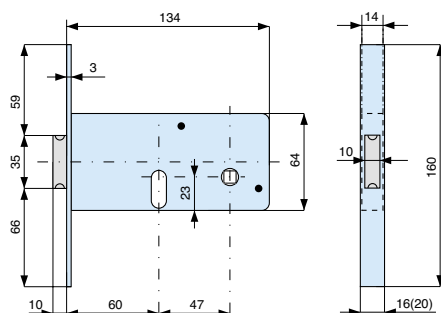
■ mm. 8



con cilindro with cylinder	frontale forend	codice code ENT	euro	
020.52.0				
	<b>acciaio zincato</b> zinc plated steel			
	mm. 16	<b>803701 000</b>	2 50	
	mm. 20	<b>803702 000</b>	2 50	

**2 mandate e scrocco - catenaccio in ottone**  
2 throws and latch bolt - brass deadbolt

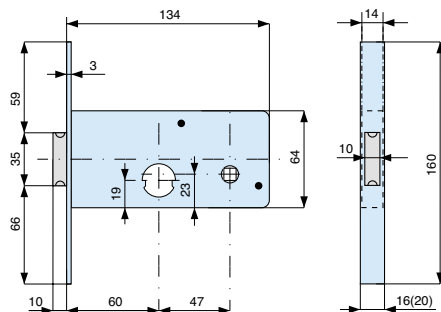
■ mm. 8



con cilindro with cylinder	frontale forend	codice code ENT	euro	
018.56.0	acciaio zincato zinc plated steel			
	mm. 16	804601 000	2	50
	mm. 20	804602 000	2	50

**2 mandate e scrocco - catenaccio in ottone**  
2 throws and latch bolt - brass deadbolt

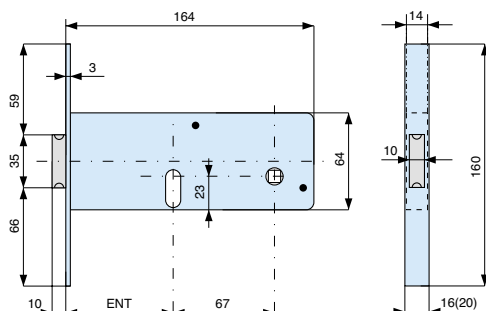
■ mm. 8



con cilindro with cylinder	frontale forend	codice code ENT	euro	
020.52.0	acciaio zincato zinc plated steel			
	mm. 16	805601 000	2	50
	mm. 20	805602 000	2	50

**2 mandate e scrocco - catenaccio in ottone**  
2 throws and latch bolt - brass deadbolt

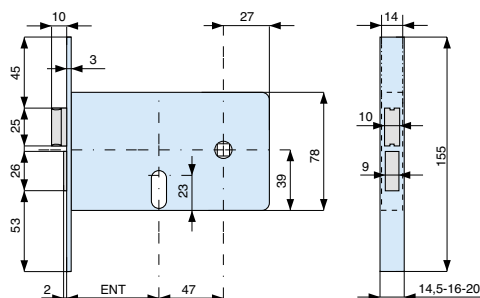
■ mm. 8




con cilindro with cylinder	frontale forend	codice code ENT	euro	
018.56.0	acciaio zincato zinc plated steel			
	mm. 16	806701 000	2	50
	mm. 20	806702 000	2	50
	mm. 16	806801 000	2	50
	mm. 20	806802 000	2	50

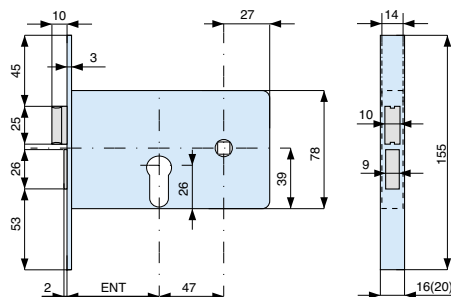
**2 mandate e scrocco separato - catenacci in ottone**  
2 throws and separate latch bolt - brass deadbolts


■ mm. 8



con cilindro with cylinder	frontale forend	codice code ENT	euro	
018.56.0	acciaio zincato zinc plated steel			
	mm. 16	809601 000	2 50	
	mm. 20	809602 000	2 50	
	mm. 16	809701 000	2 50	
	mm. 20	809702 000	2 50	
	mm. 16	809801 000	2 50	
	mm. 20	809802 000	2 50	

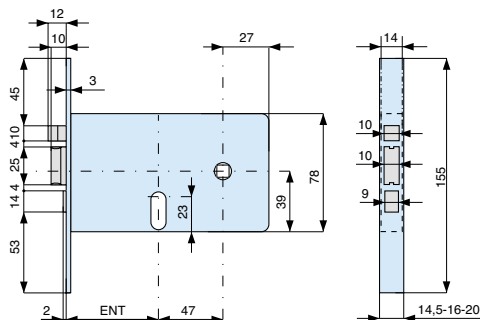
**2 mandate e scrocco separato - catenacci in ottone**  
2 throws and separate latch bolt - brass deadbolts




con cilindro with cylinder	frontale forend	codice code ENT	euro	
015.56.0	acciaio zincato zinc plated steel			
	mm. 16	812601 000	2 50	
	mm. 20	812602 000	2 50	
	mm. 16	812701 000	2 50	
	mm. 20	812702 000	2 50	
	mm. 16	812801 000	2 50	
	mm. 20	812802 000	2 50	
senza cilindro without cylinder	acciaio zincato zinc plated steel			
	mm. 16	812601 001	2 50	
	mm. 20	812602 001	2 50	
	mm. 16	812701 001	2 50	
	mm. 20	812702 001	2 50	
	mm. 16	812801 001	2 50	
	mm. 20	812802 001	2 50	

**ELETTROSERRATURA 2 mandate e scrocco - catenacci in ottone**  
ELECTRIC LOCKS 2 throws and latch bolt - brass deadbolts

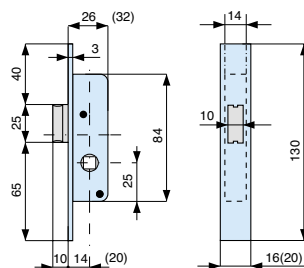
■ mm. 8



con cilindro with cylinder	frontale forend	codice code ENT	euro	
018.56.0	acciaio zincato zinc plated steel			
	mm. 16	830601 000	2 50	
	mm. 20	830602 000	2 50	
	mm. 16	830701 000	2 50	
	mm. 20	830702 000	2 50	
	mm. 16	830801 000	2 50	
	mm. 20	830802 000	2 50	

**Solo scrocco in ottone**  
Brass latch bolt

■ mm. 8



**frontale**  
forend

**codice code**  
ENT

euro

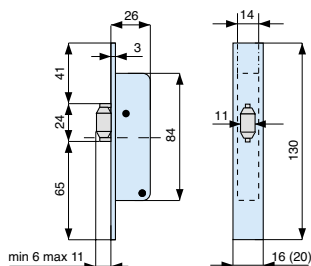


**acciaio zincato**  
zinc plated steel  
mm. 16  
mm. 20  
mm. 16  
mm. 20

**901141 001**  
**901142 001**  
**901201 001**  
**901202 001**

10  
10  
10  
10

**Solo rullo in ottone**  
Brass roller bolt



**frontale**  
forend

**codice code**  
ENT

euro

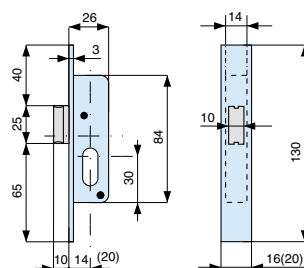


**acciaio zincato**  
zinc plated steel  
mm. 16  
mm. 20

**902141 001**  
**902142 001**

10  
10

**Solo scrocco in ottone**  
Brass latch bolt



**con cilindro**  
with cylinder

**frontale**  
forend

**codice code**  
ENT

euro



018.56.0

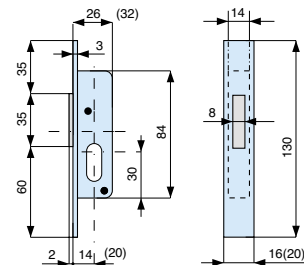


**acciaio zincato**  
zinc plated steel  
mm. 16  
mm. 20

**904141 000**  
**904142 000**

10  
10

**1 mandata - catenaccio in ottone**  
Single throw - brass deadbolt



**con cilindro**  
with cylinder

**frontale**  
forend

**codice code**  
ENT

euro



018.56.0



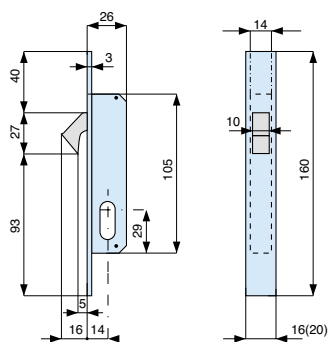
**acciaio zincato**  
zinc plated steel  
mm. 16  
mm. 20  
mm. 16  
mm. 20


**906141 000**  
**906142 000**  
**906201 000**  
**906202 000**

10  
10  
10  
10

### Gancio rientrante in acciaio completa di contropiastra A63

Steel hook bolt provided with striking plate A63

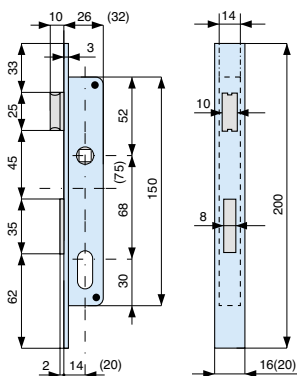



con cilindro with cylinder	frontale forend	codice code ENT	euro	
018.56.0	<b>acciaio zincato</b> zinc plated steel			
	mm. 16	908141 000	2	
	mm. 20	908142 000	2	

### 1 mandata e scrocco - catenaccio in ottone

Single throw dead bolt and latch bolt - brass deadbolt

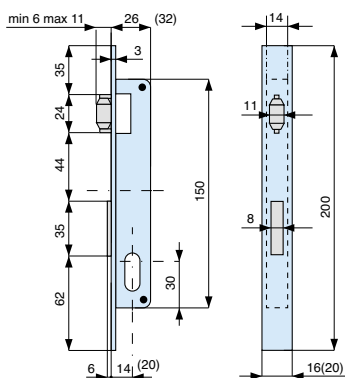
■ mm. 8




con cilindro with cylinder	frontale forend	codice code ENT	euro	
018.56.0	<b>acciaio zincato</b> zinc plated steel			
	<b>interasse 68</b> distance 68			
	mm. 16	911141 000	1	
	mm. 20	911142 000	1	
	<b>interasse 75</b> distance 75			
	mm. 16	911201 000	1	
	mm. 20	911202 000	1	
	mm. 16	911143 000	1	
	mm. 20	911144 000	1	

### 1 mandata e rullo - catenaccio in ottone

Single throw dead and roller bolt - brass deadbolt



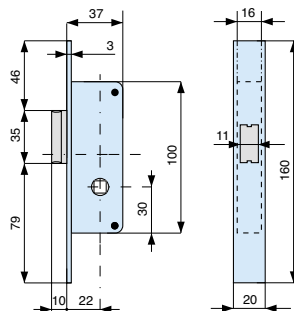
con cilindro with cylinder	frontale forend	codice code ENT	euro	
018.56.0	<b>acciaio zincato</b> zinc plated steel			
	mm. 16	913141 000	1	
	mm. 20	913142 000	1	
	mm. 16	913201 000	1	
	mm. 20	913202 000	1	



### Solo scrocco in ottone

Brass latch bolt

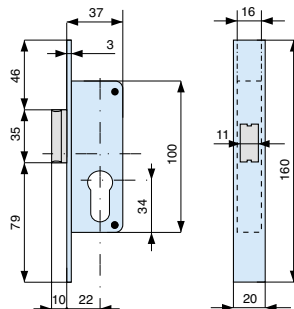
■ mm. 8



frontale forend	codice code ENT	euro	
acciaio zincato zinc plated steel	921220 001	4	

### Solo scrocco in ottone

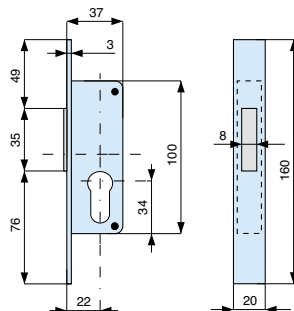
Brass latch bolt



con cilindro with cylinder	frontale forend	codice code ENT	euro	
015.56.0				
acciaio zincato zinc plated steel		922220 000	2	
senza cilindro without cylinder	acciaio zincato zinc plated steel	922220 001	2	

### 1 mandata - catenaccio in ottone

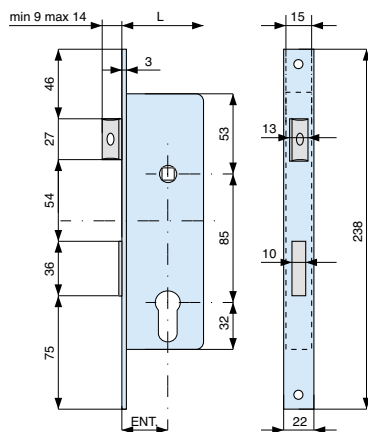
Single throw - brass deadbolt



con cilindro with cylinder	frontale forend	codice code ENT	euro	
015.56.0				
acciaio zincato zinc plated steel		923220 000	2	
senza cilindro without cylinder	acciaio zincato zinc plated steel	923220 001	2	

**1 mandata mm. 15 cat. in acciaio nichelato e scrocco regolabile nichelato**  
 1 throw mm. 15 nickel pl. steel deadbolt and nickel plated adjustable latch bolt

■ mm. 8

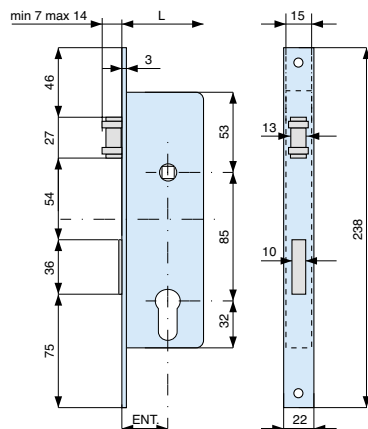


	frontale forend	codice code ENT	euro	
<b>cilindro da ordinare a parte</b>	<b>acc. nichelato opaco</b>			
cylinder to be ordered separately	matt nickel plated steel	925200 AN1 925250 AN1 925300 AN1 925350 AN1	1 1 1 1	

ENT.	21	25	30	35
L	36	40	45	50

**1 mandata mm. 15 cat. in acciaio nichelato e rullo regolabile nichelato**  
 1 throw mm. 15 nickel pl. steel deadbolt and nickel plated adjustable roller bolt

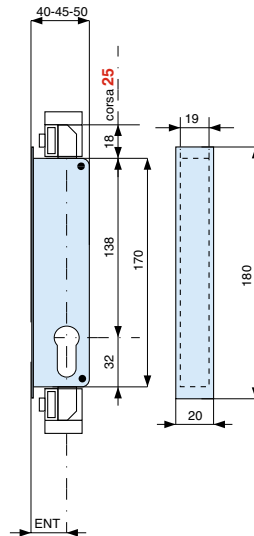
■ mm. 8



	frontale forend	codice code ENT	euro	
<b>cilindro da ordinare a parte</b>	<b>acc. nichelato opaco</b>			
cylinder to be ordered separately	matt nickel plated steel	926200 AN1 926250 AN1 926300 AN1 926350 AN1	1 1 1 1	

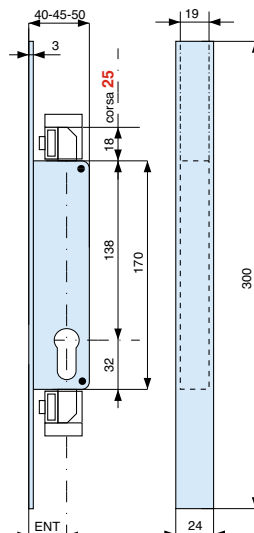
ENT.	21	25	30	35
L	36	40	45	50

2 punti di chiusura - Corsa aste **25** mm.  
con attacchi aste M8  
2 locking points - **25** mm. rod length  
with coupling rods M8



	codice code ENT	euro	
<b>cilindro da ordinare a parte</b> cylinder to be ordered separately			
	927250 001	1 30	
	927300 001	1 30	
	927350 001	1 30	

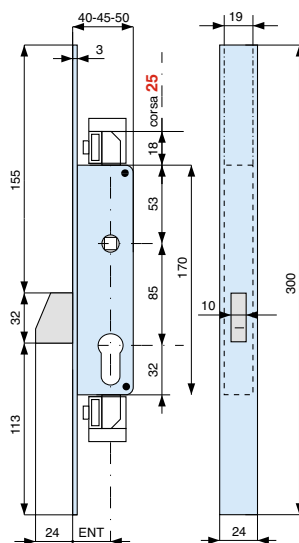
2 punti di chiusura - Corsa aste **25** mm.  
con attacchi aste M8  
2 locking points - **25** mm. rod length  
with coupling rods M8




	frontale forend	codice code ENT	euro	
<b>cilindro da ordinare a parte</b> cylinder to be ordered separately				
	acciaio zincato zinc plated steel 24 mm.	927252 001	1 30	
		927302 001	1 30	
		927352 001	1 30	
	acciaio inox stainless steel 24 mm.	927252 AX1	1 30	
		927302 AX1	1 30	
		927352 AX1	1 30	

**Catenaccio basculante in acciaio cromato - 3 punti di chiusura**  
**Movimento del catenaccio comandato dalla maniglia - Corsa aste 25 mm.**  
**con attacchi aste M8**

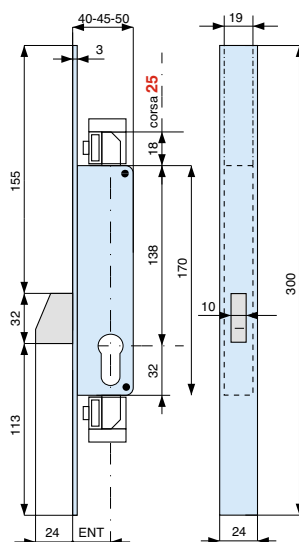
Chrome plated steel tipping bolt - 3 locking points  
 Movement of bolt controlled by handle - 25 mm. rod length  
 with coupling rods M8




frontale forend	codice code ENT	euro	
<b>cilindro da ordinare a parte</b> cylinder to be ordered separately			
	acciaio zincato	928252 001	1 30
	zinc plated steel	928302 001	1 30
	24 mm.	928352 001	1 30
	acciaio inox	928252 AX1	1 30
	stainless steel	928302 AX1	1 30
	24 mm.	928352 AX1	1 30

**Catenaccio basculante in acciaio cromato - 3 punti di chiusura**  
**Corsa aste 25 mm. con attacchi aste M8**

Chrome plated steel tipping bolt - 3 locking points  
 25 mm. rod length with coupling rods M8

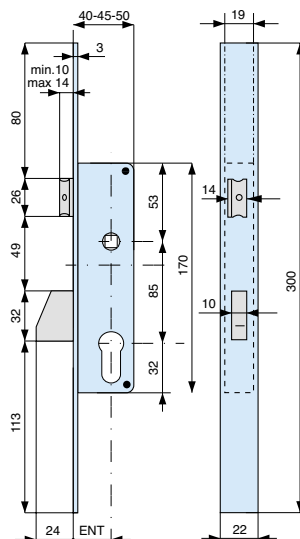


frontale forend	codice code ENT	euro	
<b>cilindro da ordinare a parte</b> cylinder to be ordered separately			
	acciaio zincato	929252 001	1 30
	zinc plated steel	929302 001	1 30
	24 mm.	929352 001	1 30
	acciaio inox	929252 AX1	1 30
	stainless steel	929302 AX1	1 30
	24 mm.	929352 AX1	1 30

### Catenaccio basculante in acciaio cromato e scrocco regolabile

Chrome plated steel tipping bolt and adjustable latch bolt

■ mm. 8



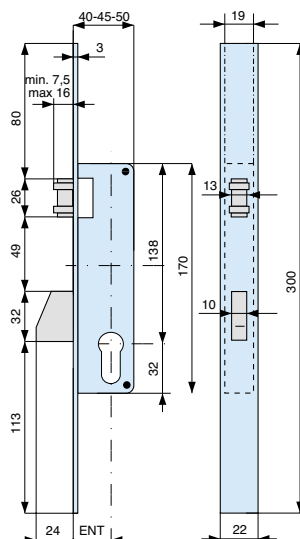
	frontale forend	codice code ENT	euro	
<b>cilindro da ordinare a parte</b> cylinder to be ordered separately	<b>acciaio inox</b> stainless steel			
		930250 AX1	1	30
		930300 AX1	1	30
		930350 AX1	1	30

**In dotazione:**  
2 borchie A39  
2 spessori sottofrontale A49  
1 vite di fissaggio cilindro

Provided with:  
2 roses A39  
2 under forendplate A49  
1 screw for cylinder

### Catenaccio basculante in acciaio cromato e rullo regolabile

Chrome plated steel tipping bolt and adjustable roller

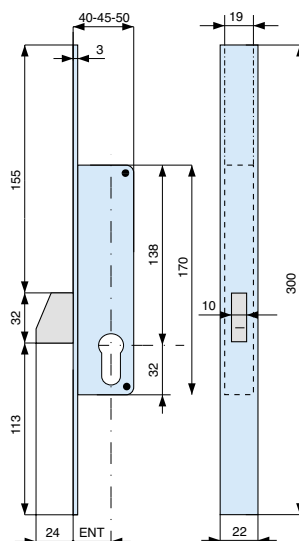



	frontale forend	codice code ENT	euro	
<b>cilindro da ordinare a parte</b> cylinder to be ordered separately	<b>acciaio inox</b> stainless steel			
		931250 AX1	1	30
		931300 AX1	1	30
		931350 AX1	1	30

**In dotazione:**  
2 borchie A39  
2 spessori sottofrontale A49  
1 vite di fissaggio cilindro

Provided with:  
2 roses A39  
2 under forendplate A49  
1 screw for cylinder

**Solo catenaccio basculante in acciaio cromato**  
 Chrome plated steel tipping bolt only

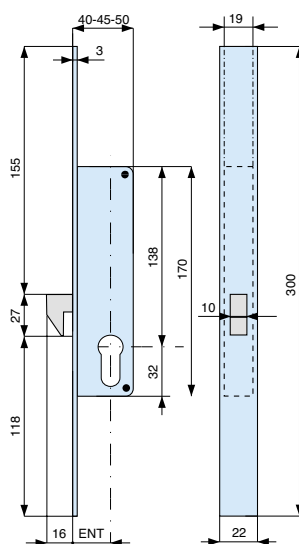



frontale forend	codice code ENT	euro	
<b>cilindro da ordinare a parte</b> cylinder to be ordered separately	acciaio inox stainless steel		
	<b>932250 AX1</b>	1	30
	<b>932300 AX1</b>	1	30
	<b>932350 AX1</b>	1	30

**In dotazione:**  
 2 borchie A39  
 2 spessori sottofrontale A49  
 1 vite di fissaggio cilindro

Provided with:  
 2 roses A39  
 2 under forendplate A49  
 1 screw for cylinder

**Gancio rientrante in acciaio cromato**  
 Chrome plated steel hook bolt



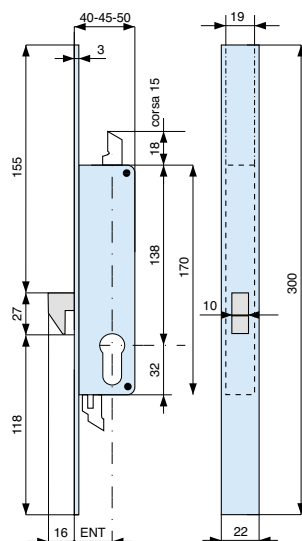
frontale forend	codice code ENT	euro	
<b>cilindro da ordinare a parte</b> cylinder to be ordered separately	acciaio inox stainless steel		
	<b>933250 AX1</b>	1	30
	<b>933300 AX1</b>	1	30
	<b>933350 AX1</b>	1	30

**In dotazione:**  
 2 borchie A39  
 2 spessori sottofrontale A49  
 1 vite di fissaggio cilindro

Provided with:  
 2 roses A39  
 2 under forendplate A49  
 1 screw for cylinder

### Gancio rientrante in acciaio cromato - 3 punti di chiusura

Chrome plated steel hook bolt - 3 locking points



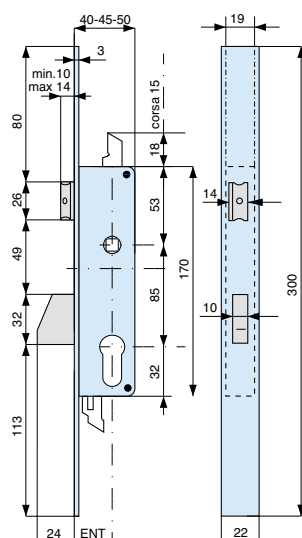
	frontale forend	codice code ENT	euro	
<b>cilindro da ordinare a parte</b> cylinder to be ordered separately	<b>acciaio inox</b> stainless steel			
		<b>934250 AX1</b>	1	30
		<b>934300 AX1</b>	1	30
		<b>934350 AX1</b>	1	30

**In dotazione:**  
**2 borchie A39**  
**2 spessori sottofrontale A49**  
**1 vite di fissaggio cilindro**  
**2 perni filettati per il**  
**fissaggio delle prolunghe**

Provided with:  
 2 roses A39  
 2 under forendplate A49  
 1 screw for cylinder  
 2 rod-fixing screws

### Catenaccio basculante in acc. cromato e scrocco regolabile - 3 punti di chiusura

Chrome plated steel tipping bolt and adjustable latch bolt - 3 locking points



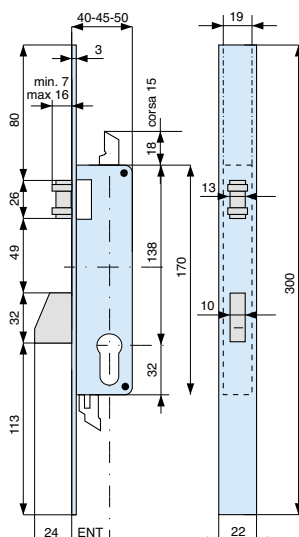
	frontale forend	codice code ENT	euro	
<b>cilindro da ordinare a parte</b> cylinder to be ordered separately	<b>acciaio inox</b> stainless steel			
		<b>935250 AX1</b>	1	30
		<b>935300 AX1</b>	1	30
		<b>935350 AX1</b>	1	30


**In dotazione:**  
**2 borchie A39**  
**2 spessori sottofrontale A49**  
**1 vite di fissaggio cilindro**  
**2 perni filettati per il**  
**fissaggio delle prolunghe**

Provided with:  
 2 roses A39  
 2 under forendplate A49  
 1 screw for cylinder  
 2 rod-fixing screws

### Catenaccio basculante in acciaio cromato e rullo regolabile - 3 punti di chiusura

Chrome plated steel tipping bolt and adjustable roller - 3 locking points



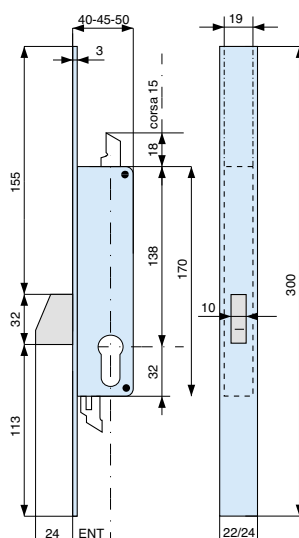
	frontale forend	codice code ENT	euro	
<b>cilindro da ordinare a parte</b> cylinder to be ordered separately	<b>acciaio inox</b> stainless steel			
		<b>936250 AX1</b>	1	30
		<b>936300 AX1</b>	1	30
		<b>936350 AX1</b>	1	30

**In dotazione:**  
**2 borchie A39**  
**2 spessori sottofrontale A49**  
**1 vite di fissaggio cilindro**  
**2 perni filettati per il fissaggio delle prolungh**

Provided with:  
 2 roses A39  
 2 under forendplate A49  
 1 screw for cylinder  
 2 rod-fixing screws

### Solo catenaccio basculante in acciaio cromato - 3 punti di chiusura

Chrome plated steel tipping bolt only - 3 locking points



	frontale forend	codice code ENT	euro	
<b>cilindro da ordinare a parte</b> cylinder to be ordered separately	<b>acciaio inox</b> stainless steel 22 mm.	<b>937250 AX1</b>	1	30
		<b>937300 AX1</b>	1	30
		<b>937350 AX1</b>	1	30
	<b>acciaio inox</b> stainless steel 24 mm.	<b>937252 AX1</b>	1	30
		<b>937302 AX1</b>	1	30
		<b>937352 AX1</b>	1	30
	<b>acciaio zincato</b> zinc plated steel 24 mm.	<b>937252 001</b>	1	30
		<b>937302 001</b>	1	30
		<b>937352 001</b>	1	30

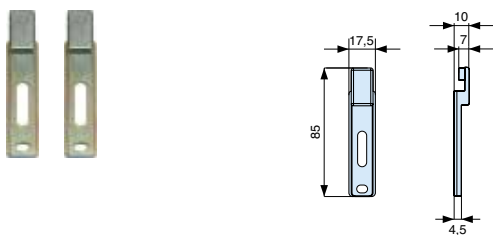
**In dotazione:**  
**2 borchie A39**  
**2 spessori sottofrontale A49**  
**1 vite di fissaggio cilindro**  
**2 perni filettati per il fissaggio delle prolungh**

Provided with:  
 2 roses A39  
 2 under forendplate A49  
 1 screw for cylinder  
 2 rod-fixing screws



### Coppia piastrine di collegamento per aste esterne - **PROFILO R40**

Set of connecting plate for external rods



codice  
code

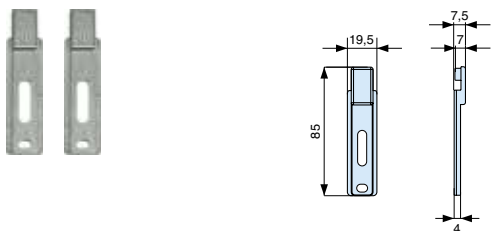
euro



93801 00

### Coppia piastrine di collegamento per aste esterne - **PROFILO CAMERA EUROPEA**

Set of connecting plate for external rods



codice  
code

euro



93802 00

### Kit aste interne filettate

Internal threaded rods kit



codice  
code

euro



93803 00

### Coppia attacchi per aste interne M8

Set for internal rods M8



codice  
code

euro



93804 00

### Kit rullo per art. 930 - 935 - 950

Roller kit for art. 930 - 935 - 950



codice  
code

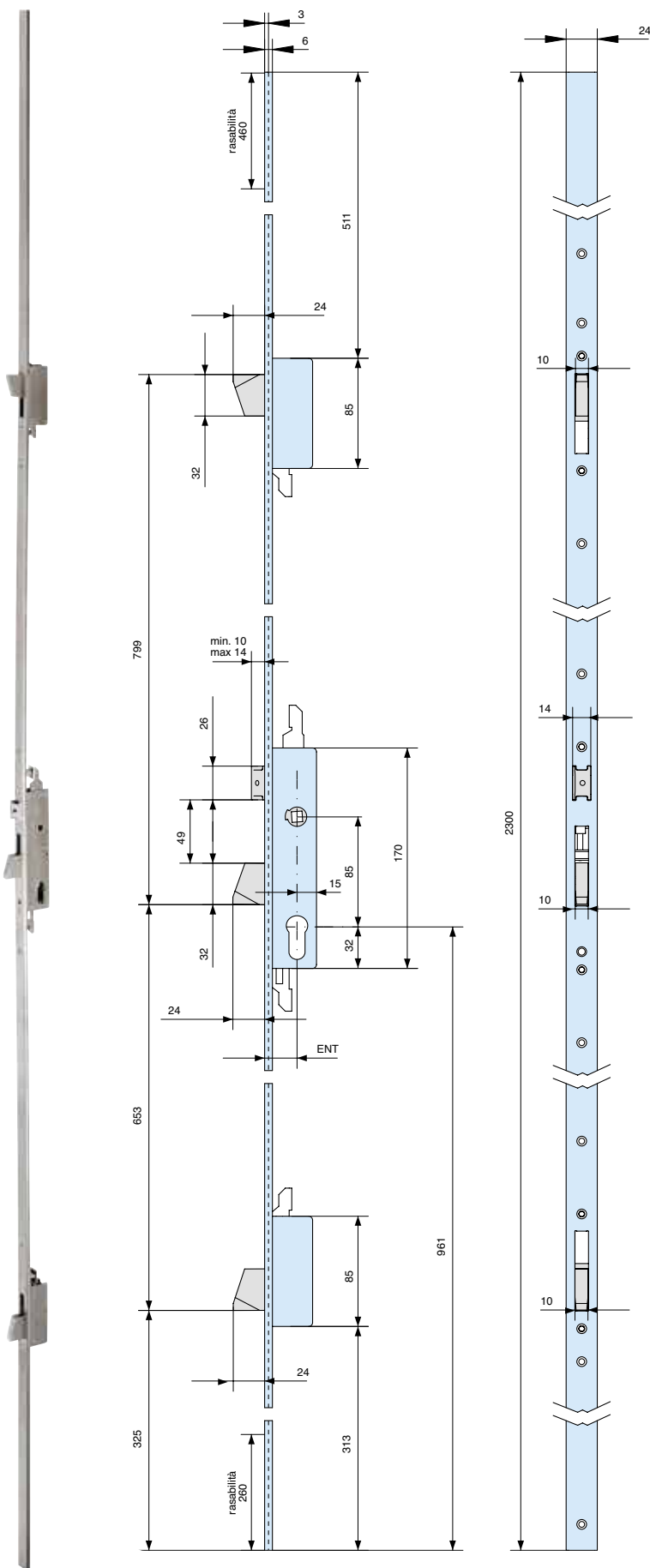
euro





KITRUL 931

### 3 catenacci basculanti in acciaio cromato e scrocco regolabile

### 3 chrome plated steel tipping bolt and adjustable latch bolt

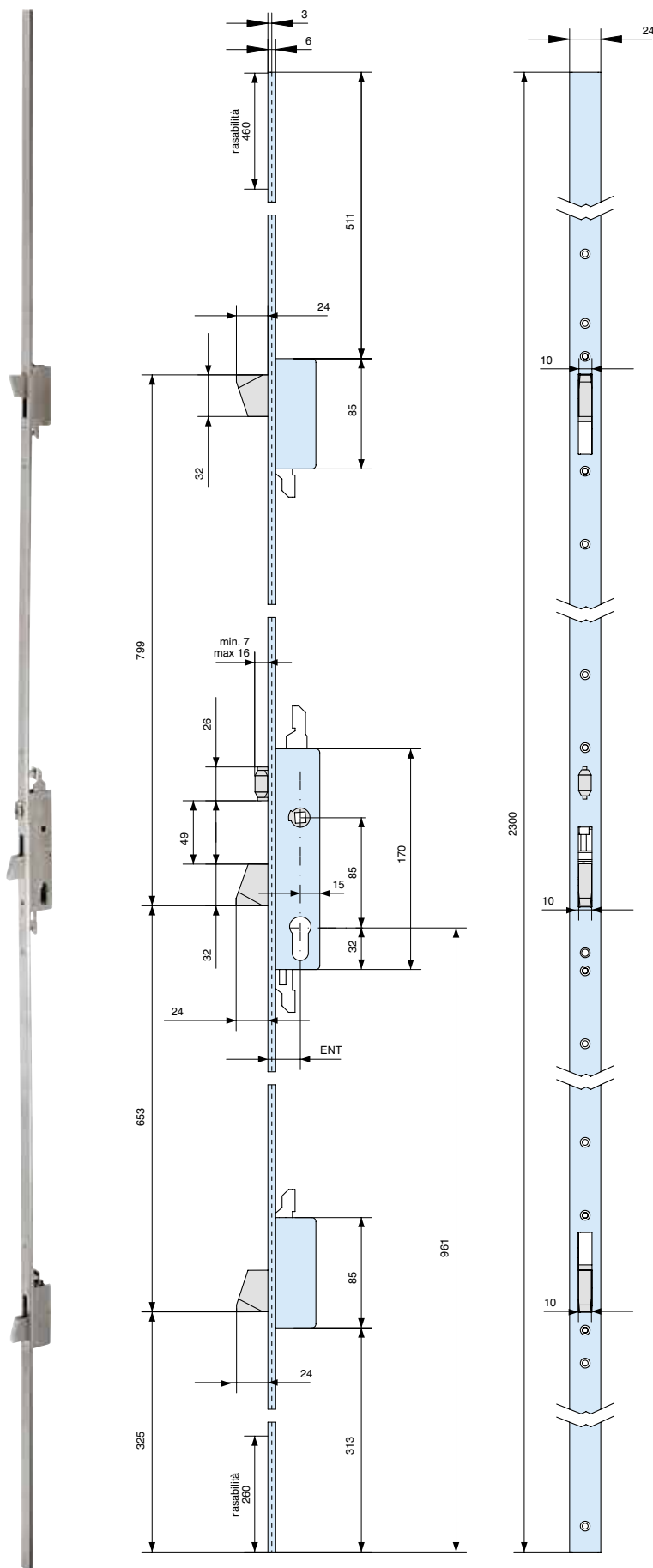


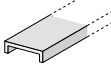


frontale forend	codice code ENT	euro
<b>cilindro da ordinare a parte</b> cylinder to be ordered separately	<b>rasabile a "U"</b> <b>24x6 in acciaio inox</b> adjustable "U" shaped 24x6 stainless steel	
	<b>950251 AX1</b>	1
	<b>950301 AX1</b>	1
	<b>950351 AX1</b>	1

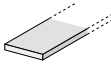


frontale forend	codice code ENT	euro
<b>cilindro da ordinare a parte</b> cylinder to be ordered separately	<b>rasabile piatto</b> <b>24x3 in acciaio inox</b> adjustable flat shaped 24x3 stainless steel	
	<b>950252 AX1</b>	1
	<b>950302 AX1</b>	1
	<b>950352 AX1</b>	1

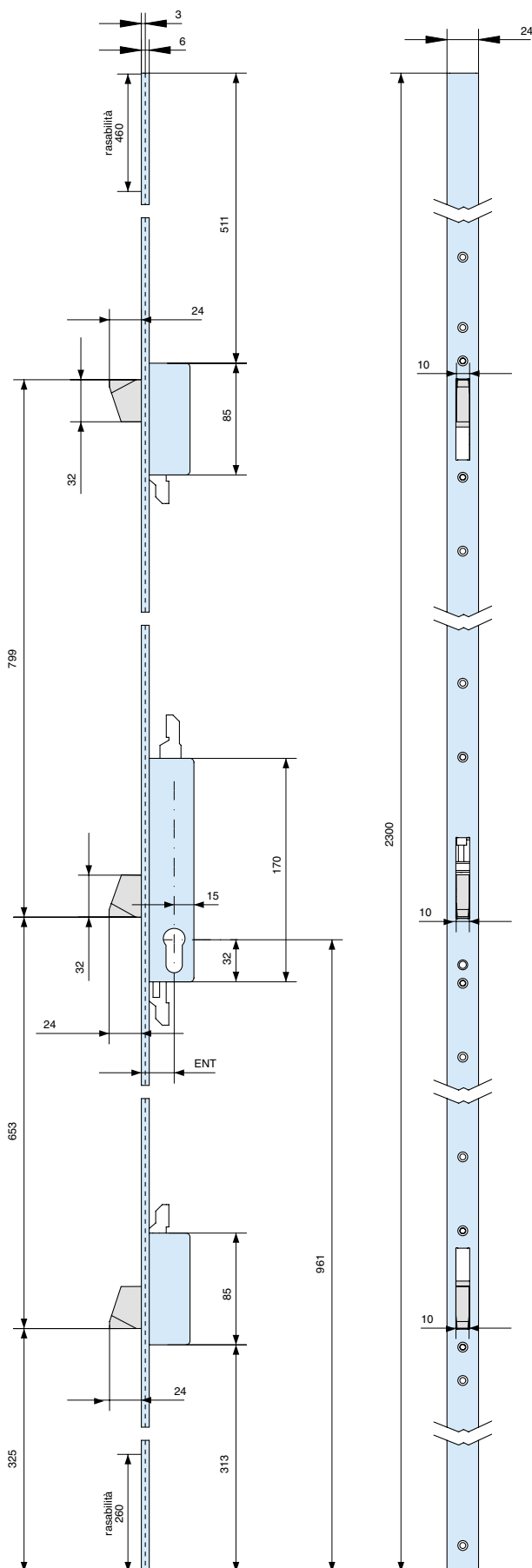
### 3 catenacci basculanti in acciaio cromato e rullo regolabile





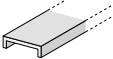
3 chrome plated steel tipping bolt and adjustable roller





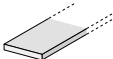


frontale forend	codice code ENT	euro	
<b>cilindro da ordinare a parte</b> cylinder to be ordered separately			
	<b>rasabile a "U"</b> <b>24x6 in acciaio inox</b> adjustable "U" shaped 24x6 stainless steel		
			
	<b>951251 AX1</b>	1	
	<b>951301 AX1</b>	1	
	<b>951351 AX1</b>	1	

frontale forend	codice code ENT	euro	
<b>cilindro da ordinare a parte</b> cylinder to be ordered separately			
	<b>rasabile piatto</b> <b>24x3 in acciaio inox</b> adjustable flat shaped 24x3 stainless steel		
			
	<b>951252 AX1</b>	1	
	<b>951302 AX1</b>	1	
	<b>951352 AX1</b>	1	

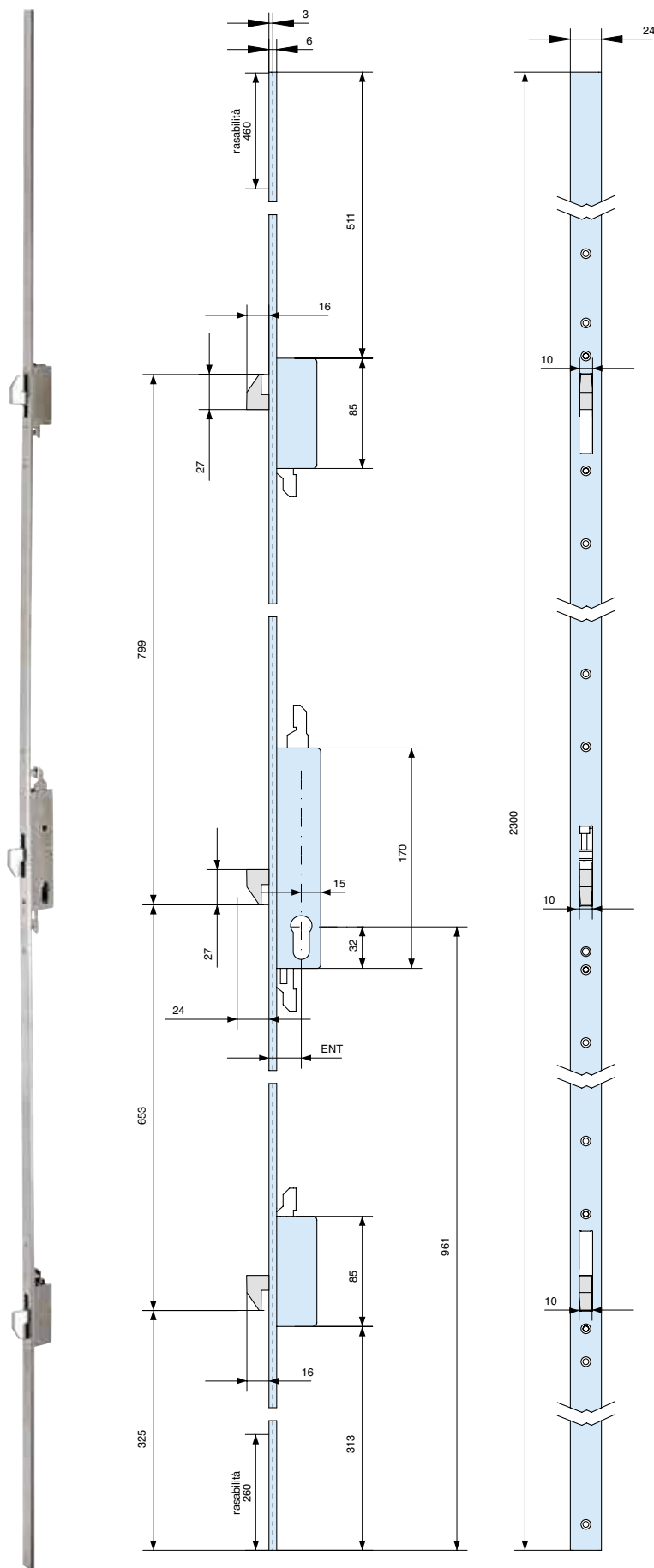


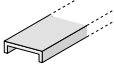

	frontale forend	codice code ENT	euro 	
<b>cilindro da ordinare a parte</b> cylinder to be ordered separately  	 <b>rasabile a "U"</b> <b>24x6 in acciaio</b> inox adjustable "U" shaped 24x6 stainless steel	<b>952251 AX1</b> <b>952301 AX1</b> <b>952351 AX1</b>	1 1 1	

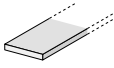

	frontale forend	codice code ENT	euro 	
<b>cilindro da ordinare a parte</b> cylinder to be ordered separately  	 <b>rasabile piatto 24x3 in acciaio inox</b> adjustable flat shaped 24x3 stainless steel	<b>952252 AX1</b> <b>952302 AX1</b> <b>952352 AX1</b>	 1 1 1	

### 3 ganci rientranti in acciaio cromato

3 chrome plated steel hook bolt



frontale forend	codice code ENT	euro	
<b>cilindro da ordinare a parte</b> cylinder to be ordered separately			
	<b>rasabile a "U"</b> <b>24x6 in acciaio inox</b> adjustable "U" shaped 24x6 stainless steel		
	<b>953251 AX1</b>	1	
	<b>953301 AX1</b>	1	
	<b>953351 AX1</b>	1	

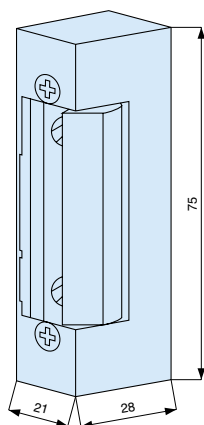
frontale forend	codice code ENT	euro	
<b>cilindro da ordinare a parte</b> cylinder to be ordered separately			
	<b>rasabile piatto</b> <b>24x3 in acciaio inox</b> adjustable flat shaped 24x3 stainless steel		
	<b>953252 AX1</b>	1	
	<b>953302 AX1</b>	1	
	<b>953352 AX1</b>	1	

## Incontro elettrico simmetrico spessore 21 mm

Electric release



- antiripetitore interno
- scrocco regolabile
- leva di sbloccaggio
- 6-12 V
- internal hold-open function
- adjustable keeper
- mechanical unlocking
- 6 -12 V



senza frontale  
without forend

codice  
code

euro



980210 000

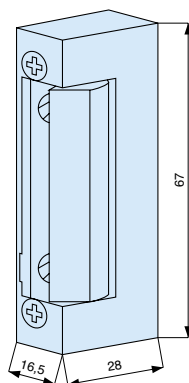
1

## Incontro elettrico simmetrico radiale spessore 16,5 mm

Electric release



- antiripetitore interno
- scrocco regolabile radiale
- leva di sbloccaggio
- 6-12 V
- internal hold-open function
- adjustable radius keeper
- mechanical unlocking
- 6 -12 V



senza frontale  
without forend

codice  
code

euro

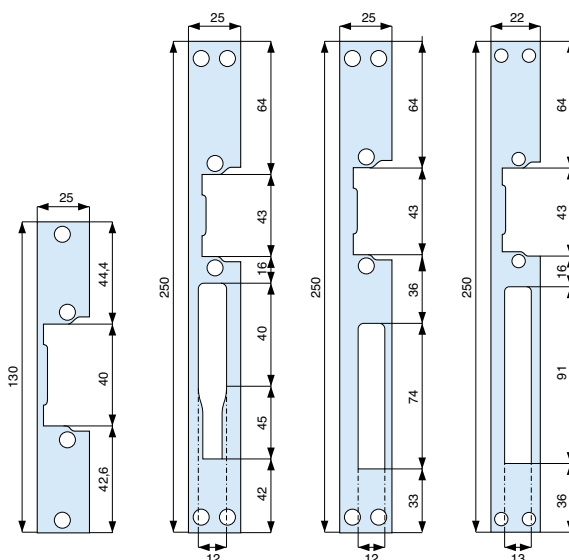


980160 000

1

## Frontali per incontri elettrici

Front plate for electric release



25x130 inox

980001 AX0

10

25x250 inox cat. basculante/*tipping bolt*

980002 AX0

10

25x250 inox

980003 AX0

10

22x250 inox solo per 980160/*only for 980160*

980004 AX0

10



- **COMPONENTI DI CIFRATURE  
PER CILINDRI STANDARD E X8**  
SPARE PARTS FOR STANDARD  
AND X8 CYLINDERS



P. 130

- **COMPONENTI DI CIFRATURE  
PER CILINDRI HS E HSP**  
SPARE PARTS FOR HS  
AND HSP CYLINDERS



P. 131

- **ATTREZZI DI MONTAGGIO  
PER CILINDRI HS E HSP**  
ASSEMBLING TOOLS FOR HS  
AND HSP CYLINDERS



P. 132

- **BORCHIE DI PROTEZIONE**  
DRILL RESISTANT ESCUTCHEON



P. 134

- **BORCHIE**  
ROSES



P. 135

- **CONTROPIASTRE**  
STRIKING PLATES



P. 138

- **BOBINE E CONTATTI**  
SOLENOID AND CONTACTS



P. 146



## Perni Pins



**Per cil. 018 - 020**  
For cyl. 018 - 020

SPN25/1	Ø 2,5 x 3,2
SPN25/2	Ø 2,5 x 3,7
SPN25/3	Ø 2,5 x 4,2
SPN25/4	Ø 2,5 x 4,7
SPN25/5	Ø 2,5 x 5,2

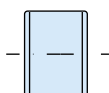
**Per cil. 015 - X80**  
For cyl. 015 - X80

SPN30/1	Ø 3 x 4,7
SPN30/2	Ø 3 x 5,2
SPN30/3	Ø 3 x 5,7
SPN30/4	Ø 3 x 6,2
SPN30/5	Ø 3 x 6,7
SPN30/6	Ø 3 x 7,2
SPN30/7	Ø 3 x 7,7

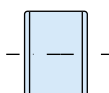
## Controperni Top pins



## Tappi Plugs



## Pastiglie per MK Pins for MK



**Per cil. 015 - X80**  
For cyl. 015 - X80

SPN01/1	Ø 3 x 0,5
SPN01/2	Ø 3 x 1
SPN01/3	Ø 3 x 1,5
SPN01/4	Ø 3 x 2
SPN01/5	Ø 3 x 2,5
SPN01/6	Ø 3 x 3

**Per cil. 018 - 020**  
For cyl. 018 - 020

SPN02/2	Ø 2,5 x 0,5
SPN02/4	Ø 2,5 x 1
SPN02/5	Ø 2,5 x 1,5
SPN02/6	Ø 2,5 x 2
SPN02/7	Ø 2,5 x 2,5
SPN02/8	Ø 2,5 x 3

## Molle Springs



	codice code	euro	
Ø 3 per cilindro con chiavi art. K03 (7 lungh.) e per cilindro con chiavi art. K08 (5 lungh.) Ø 3 for cylinder with keys art. K03 (7 length) and for cylinder with keys art. K08 (5 length)	SPN30	1.000	
Ø 2,5 per cilindro con chiavi art. K04 (5 lungh.) Ø 2,5 for cylinder with keys art. K04 (5 length)	SPN25	1.000	
Ø 2,5 x 5,7 per cilindro X8 Ø 2,5 x 5,7 for cylinder X8	SPN25 X8	1.000	

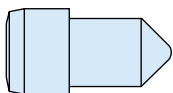
	codice code	euro	
Ø 2,9 per cilindro con chiavi art. K03 e per cilindro con chiavi art. K08 Ø 2,9 for cylinder with keys art. K03 and for cylinder with keys art. K08	SPN29	1.000	
Ø 2,4 per cilindro con chiavi art. K04 Ø 2,4 for cylinder with keys art. K04	SPN24	1.000	

	codice code	euro	
Ø 3,3 per cilindro con chiavi art. K03 e per cilindro con chiavi art. K08 Ø 3,3 for cylinder with keys art. K03 and for cylinder with keys art. K08	SPN33	1.000	
Ø 2,8 per cilindro con chiavi art. K04 Ø 2,8 for cylinder with keys art. K04	SPN28	1.000	

	codice code	euro	
Ø 3 per cilindro con chiavi art. K03 (6 lungh.) e per cilindro con chiavi art. K08 (4 lungh.) Ø 3 for cylinder with keys art. K03 (6 length) and for cylinder with keys art. K08 (4 length)	SPN01	500	
Ø 2,5 per cilindro con chiavi art. K04 Ø 2,5 for cylinder with keys art. K04	SPN02	500	

	codice code	euro	
per cilindri art. 015-017-025-X80 for cylinders art. 015-017-025-X80	MOL00 2	1.000	
per cilindri art. 018-026 for cylinders art. 018-026	MOL00 3	1.000	
per cilindri art. 019-027 for cylinders art. 019-027	MOL00 4	1.000	
per cilindri art. 020-028 for cylinders art. 020-028	MOL00 5	1.000	

**Perni in acciaio temperato (5 lunghezze) per cilindri HS e HSP**  
Hardened steel pins (5 length) for cylinders HS and HSP



SPN2520/1	Ø 2,5 x 2,85
SPN2520/2	Ø 2,5 x 3,25
SPN2520/3	Ø 2,5 x 3,85
SPN2520/4	Ø 2,5 x 4,25
SPN2520/5	Ø 2,5 x 4,65

codice code	euro	
SPN25 20	100	

**Perni in acciaio inox solo per HSP**  
Stainless steel pins only for HSP



codice code	euro	
SPN25 20P	100	

**Controperni in acciaio inox per cilindri HS e HSP**  
Stainless steel top pins for cylinders HS and HSP



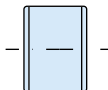
SPN2514



SPN2514/2

codice code	euro	
SPN25 14	100	
SPN25 14/2	100	

**Pastiglie per MK in acciaio inox per cilindri HS e HSP**  
Stainless steel pins for MK for cylinders HS and HSP



SPN02/1	Ø 2,5 x 0,4
SPN02/3	Ø 2,5 x 0,8

2 lunghezze  
2 lengths

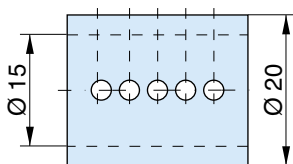
codice code	euro	
SPN02	100	

**Molle in acciaio inox per cilindri HS e HSP**  
Stainless steel springs for cylinders HS and HSP



codice code	euro	
MOL00 9	500	

**Caricatore per cifratura cilindri**  
Cylinder pinning tool



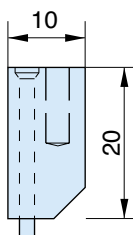
codice  
code

euro



**ATT00 1**

**Attrezzo premi molle**  
Pressing springs tool



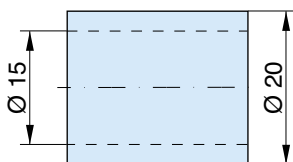
codice  
code

euro



**ATT00 2**

**Bussole**  
Bush



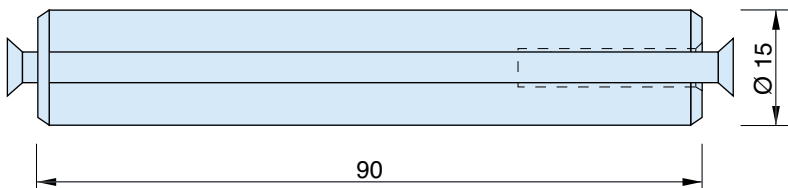
codice  
code

euro



**ATT00 3**

**Spintore**  
Piston pin



codice  
code

euro



**ATT00 4**

**Pinza per apertura anelli**  
Circlip plier



codice code		euro	
PNZ00	1		

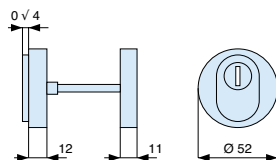
**Pinza per chiusura anelli**  
Plier for ring closing



	codice code		euro	
per cilindri art. 015 for cylinders art. 015	PNZ01	5		
per cilindri art. 018 - H23 - P23 for cylinders art. 018 - H23 - P23	PNZ01	8		

### Borchia di protezione in acciaio temprato con borchia interna

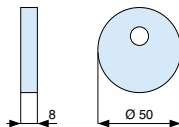
Hardned steel escutcheon with internal escutcheon



finiture finishing	codice code	euro		
<b>Ottone lucido</b> Polished brass	<b>A0100 LV</b>		1	
<b>Cromo lucido</b> Polished chrome	<b>A0100 CL</b>		1	
<b>Cromo satinato</b> Satin chrome	<b>A0100 CS</b>		1	

### Borchia interna per cilindro con codolo lungo - Ø 50 completa di supp. in plastica

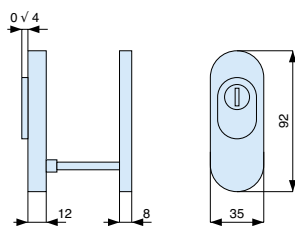
Internal escutcheon for cylinder with long tang - Ø 55 complete with plastic support



finiture finishing	codice code	euro		
<b>Ottone lucido</b> Polished brass	<b>A0202 LV</b>		10	
<b>Cromo lucido</b> Polished chrome	<b>A0202 CL</b>		10	
<b>Cromo satinato</b> Satin chrome	<b>A0202 CS</b>		10	

### Borchia di protezione in acciaio temprato con borchia interna

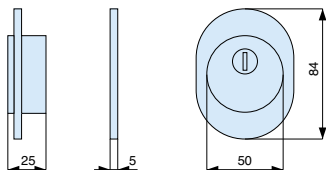
Hardned steel escutcheon with internal escutcheon



finiture finishing	codice code	euro		
<b>Ottone lucido</b> Polished brass	<b>A0300 LV</b>		1	
<b>Cromo lucido</b> Polished chrome	<b>A0300 CL</b>		1	
<b>Cromo satinato</b> Satin chrome	<b>A0300 CS</b>		1	

### Borchia di protezione in acciaio temprato con borchia interna

Hardned steel escutcheon with internal escutcheon



finiture finishing	codice code	euro		
<b>Ottone lucido</b> Polished brass	<b>A0400 LV</b>		1	
<b>Cromo satinato</b> Satin chrome	<b>A0400 CS</b>		1	

**Borchia per cilindro 012**

Rose for cylinder 012



finiture finishing	codice code	euro	
<b>Ottone lucido</b> Polished brass	<b>A3200 LV</b>	100	
<b>Ottone nichelato</b> Nickel plated brass	<b>A3200 LN</b>	100	

**Borchia per cilindro 015**

Rose for cylinder 015



finiture finishing	codice code	euro	
<b>Ottone lucido</b> Polished brass	<b>A3300 LV</b>	100	
<b>Ottone nichelato</b> Nickel plated brass	<b>A3300 LN</b>	100	

**Borchia per cilindro 015**

Rose for cylinder 015



finiture finishing	codice code	euro	
<b>Ferro ottonato</b> Brass plated steel	<b>A3400 AL</b>	100	
<b>Ferro nichelato</b> Nickel plated steel	<b>A3400 AN</b>	100	

**Borchia per cilindro 018**

Rose for cylinder 018



finiture finishing	codice code	euro	
<b>Ottone lucido</b> Polished brass	<b>A3500 LV</b>	100	
<b>Ottone nichelato</b> Nickel plated brass	<b>A3500 LN</b>	100	



### Borchia per cilindro 018

Rose for cylinder 018



finiture finishing	codice code	euro	
<b>Ferro ottonato</b> Brass plated steel	<b>A3600 AL</b>		100
<b>Ferro nichelato</b> Nickel plated steel	<b>A3600 AN</b>		100

### Borchia per cilindro 015

Rose for cylinder 015



finiture finishing	codice code	euro	
<b>Ferro ottonato</b> Brass plated steel	<b>A3700 AL</b>		100
<b>Ferro nichelato</b> Nickel plated steel	<b>A3700 AN</b>		100

### Borchia per cilindro 019

Rose for cylinder 019



finiture finishing	codice code	euro	
<b>Ferro ottonato</b> Brass plated steel	<b>A3801 AL</b>		100
<b>Ferro nichelato</b> Nickel plated steel	<b>A3801 AN</b>		100

### Borchia per cilindro 020

Rose for cylinder 020



finiture finishing	codice code	euro	
<b>Ferro ottonato</b> Brass plated steel	<b>A3802 AL</b>		100
<b>Ferro nichelato</b> Nickel plated steel	<b>A3802 AN</b>		100

### Borchia per cilindro 015

Rose for cylinder 015



finiture finishing	codice code	euro	
<b>Nylon nero</b> Black nylon	<b>A3900 00</b>		100

**Borchia per cilindro 018**

Rose for cylinder 018

finiture  
finishingcodice  
code

euro

**Nylon nero**  
Black nylon**A4000 00**

100

**Borchia per cilindro 020**

Rose for cylinder 020

finiture  
finishingcodice  
code

euro

**Nylon nero**  
Black nylon**A4100 00**

100

**Borchia per cilindro 019**

Rose for cylinder 019

finiture  
finishingcodice  
code

euro

**Nylon nero**  
Black nylon**A4200 10**

100

**Borchia per cilindro 020**

Rose for cylinder 020

finiture  
finishingcodice  
code

euro

**Nylon nero**  
Black nylon**A4200 20**

100

**Sottofrontale per serie 930**

Under forendplate for series 930

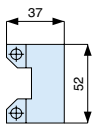
codice  
code

euro

**A4900 00****BORCHIE**  
Roses

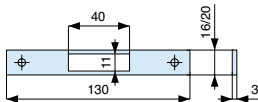


**Singolo - per art. 601 - 611**  
Single - for art. 601 - 611



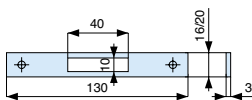
finiture finishing	codice code	euro	
<b>Ferro zincato</b> Zinc plated steel	<b>A5000 00</b>		50

**Per art. 555 - 805 - 901**  
For art. 555 - 805 - 901



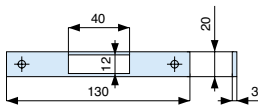
finiture finishing	codice code	euro	
<b>Ferro zincato</b> Zinc plated steel			
mm. 16 x 120	<b>A5401 00</b>		50
mm. 20 x 120	<b>A5402 00</b>		50
<b>Ferro nichelato</b> Nickel plated steel			
mm. 16 x 120	<b>A5401 AN</b>		50
mm. 20 x 120	<b>A5402 AN</b>		50

**Per art. 902 - 906**  
For art. 902 - 906



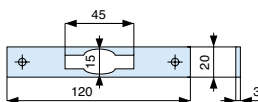
finiture finishing	codice code	euro	
<b>Ferro zincato</b> Zinc plated steel			
mm. 16 x 120	<b>A5501 00</b>		50
mm. 20 x 120	<b>A5502 00</b>		50
<b>Ferro nichelato</b> Nickel plated steel			
mm. 16 x 120	<b>A5501 AN</b>		50
mm. 20 x 120	<b>A5502 AN</b>		50

**Per art. 313**  
For art. 313



finiture finishing	codice code	euro	
<b>Ferro zincato</b> Zinc plated steel	<b>A5700 00</b>		50

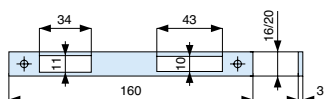
**Per art. 271**  
For art. 271



finiture finishing	codice code	euro	
<b>Ferro ottonato</b> Brass plated steel	<b>A5800 AL</b>		50
<b>Ferro nichelato</b> Nickel plated steel	<b>A5800 AN</b>		50

**Per art. 911 - 913**

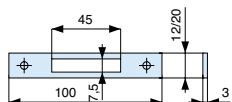
For art. 911 - 913



finiture finishing	codice code	euro	
<b>Ferro zincato</b> Zinc plated steel			
mm. 16 x 120	<b>A5901 00</b>	50	
mm. 20 x 120	<b>A5902 00</b>	50	
<b>Ferro nichelato</b> Nickel plated steel			
mm. 16 x 120	<b>A5901 AN</b>	50	
mm. 20 x 120	<b>A5902 AN</b>	50	

**Ottone - per art. 542 - 545**

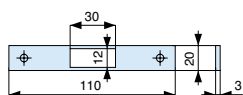
Brass - for art. 542 - 545



finiture finishing	codice code	euro	
<b>Ottone lucido</b> Polished brass			
mm. 16 x 120	<b>A6201 LV</b>	50	
mm. 20 x 120	<b>A6202 LV</b>	50	
<b>Ottone nichelato</b> Nickel plated brass			
mm. 16 x 120	<b>A6201 LN</b>	50	
mm. 20 x 120	<b>A6202 LN</b>	50	

**Per art. 544 - 552.2 - 553.2- 908**

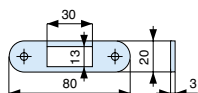
For art. 544 - 552.2 - 553.2- 908



finiture finishing	codice code	euro	
<b>Ferro ottonato</b> Brass plated steel			
mm. 16 x 120	<b>A6301 AL</b>	50	
mm. 20 x 120	<b>A6302 AL</b>	50	
<b>Ferro nichelato</b> Nickel plated steel			
mm. 16 x 120	<b>A6301 AN</b>	50	
mm. 20 x 120	<b>A6302 AN</b>	50	
<b>Ottone lucido</b> Polished brass			
mm. 16 x 120	<b>A6301 LV</b>	50	
mm. 20 x 120	<b>A6302 LV</b>	50	
<b>Ottone nichelato</b> Nickel plated brass			
mm. 16 x 120	<b>A6301 LN</b>	50	
mm. 20 x 120	<b>A6302 LN</b>	50	

**Per art. 552.1 - 553.1**

For art. 552.1 - 553.1

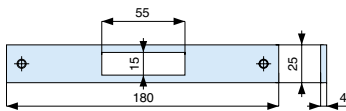


finiture finishing	codice code	euro	
<b>Ferro ottonato</b> Brass plated steel	<b>A6304 AL</b>	50	
<b>Ferro nichelato</b> Nickel plated steel	<b>A6304 AN</b>	50	
<b>Ottone lucido</b> Polished brass	<b>A6304 LV</b>	50	
<b>Ottone nichelato</b> Nickel plated brass	<b>A6304 LN</b>	50	



**Per art. 561 - 562**

For art. 561 - 562



finiture  
finishing

codice  
code

euro



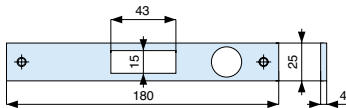
**Ferro zincato**  
Zinc plated steel

**A6400 00**

20

**Per art. 566 - 568**

For art. 566 - 568



finiture  
finishing

codice  
code

euro



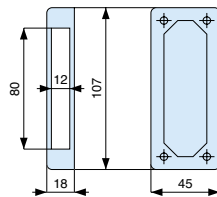
**Ferro zincato**  
Zinc plated steel

**A6500 00**

20

**Per art. 436 - 437**

For art. 436 - 437



finiture  
finishing

codice  
code

euro



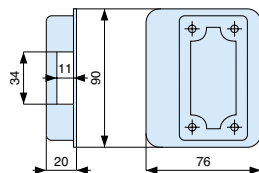
**Ferro zincato**  
Zinc plated steel

**A6700 00**

10

**Per art. 712**

For art. 712



finiture  
finishing

codice  
code

euro



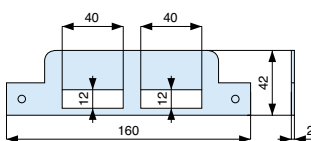
**Ferro verniciato**  
Lacquered steel

**A6800 00**

20

**Per art. 461**

For art. 461



finiture  
finishing

codice  
code

euro

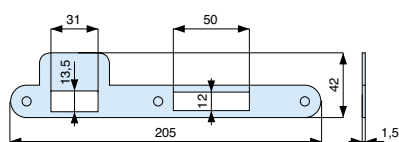


**Ferro zincato**  
Zinc plated steel

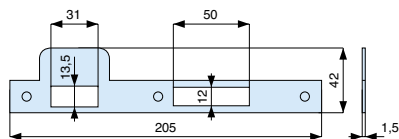
**A6900 00**

20

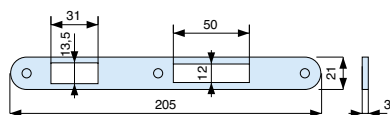
Per art. 740  
For art. 740



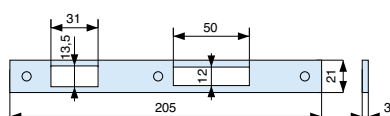
A7001



A7002

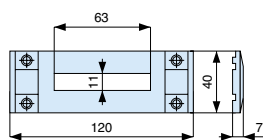


A7003



A7004

Nylon nero autolubrificante  
Self-lubricating black nylon



Nylon nero autolubrificante  
Self-lubricating black nylon



finiture finishing	codice code	euro	
<b>Acciaio ottonato</b> Brass plated steel	A7000 AL		
<b>Acciaio nichelato opaco</b> Matt nickel plated steel	A7000 AN		
<b>Acciaio cromo lucido</b> Polished chrome steel	A7000 AC		
<b>Acciaio cromo satinato</b> Satin chrome steel	A7000 AS		
<b>Acciaio bronzato</b> Bronze steel	A7000 AB		
<b>Acciaio inox</b> Stainless steel	A7000 AX		
<b>Ottone lucido verniciato</b> Polished brass	A7000 LV		
<b>Ottone nichelato opaco</b> Matt nickel plated brass	A7000 LN		
<b>Ottone cromo lucido</b> Polished chrome brass	A7000 CL		
<b>Ottone cromo satinato</b> Satin chrome brass	A7000 CS		
<b>Ottone bronzato</b> Bronze brass	A7000 LB		

	codice code	euro	
<b>Per profili NC 40 e similari</b> For profiles NC 40 and similar	A7100 10	50	

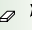

	codice code	euro	
<b>Per profili serie R 40</b> For profiles R 40 series	A7300 00	50	



**Contropiastre regolabili per art. 930**  
Adjustable striking plate for art. 930

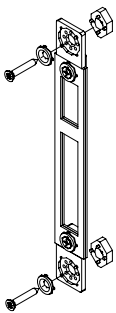
finiture  
finishing

codice  
code

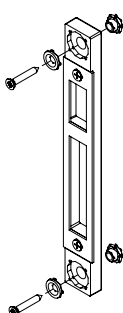
euro  

**Acciaio inox**  
Stainless steel

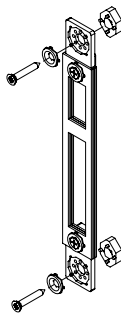
A8101	AX	10
A8102	AX	10
A8104	AX	10
A8105	AX	10
A8106	AX	10
A8108	AX	10
A8109	AX	10



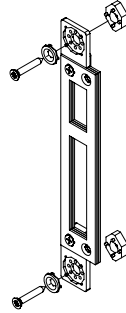
A8101AX



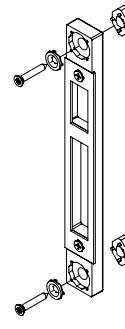
A8102AX



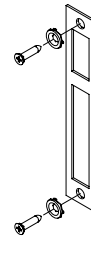
A8104AX



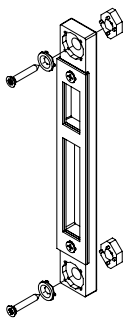
A8105AX



A8106AX



A8108AX



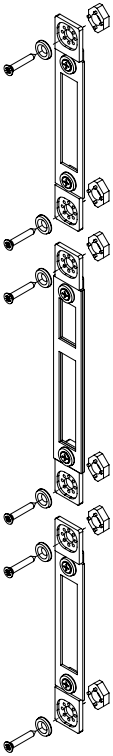
A8109AX

**Contropiastre regolabili per art. 950**  
Adjustable striking plate for art. 950

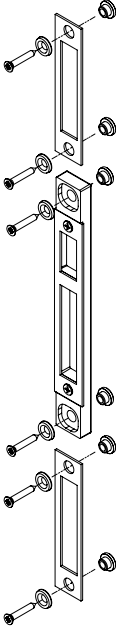
finiture  
finishing

**Acciaio inox**  
Stainless steel

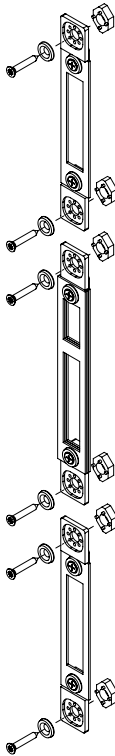
codice code		euro	
A8301	AX	10	
A8302	AX	10	
A8304	AX	10	
A8305	AX	10	
A8306	AX	10	
A8308	AX	10	
A8309	AX	10	



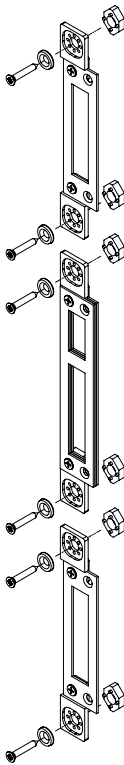
A8301AX



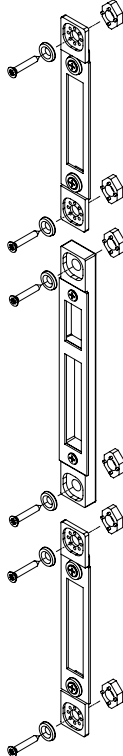
A8302AX



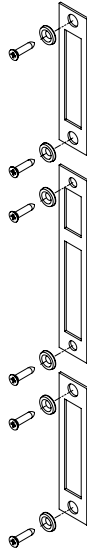
A8304AX



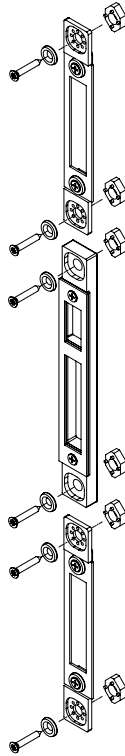
A8305AX



A8306AX



A8308AX



A8309AX

## A8101AX - A8301AX

AGNELLI METALLI	Esedra GA 53 complanare Esedra T.T. 63 Esedra T.T. 75	GARCIA PADRONES A 93 ALUMINIOS S.L.		OCMA	FC 47 FC 55 FC 70 hercules
ALCAN	Cristal Green Keeper 53-60	GRUPPO EXTRUGAL	40x40 R.P. 68 P 45 R.P. 52 puerta	PASSERINI	Ekip thermo sormonto Ekip base
ALIPLAST	50 T.T.	HYDRO ALLUMINIO	Domal stopper PG Domal break PA 52 e 70	PERFIVAL	V/94
ALL.CO	All.co K 40 Export 40/50 Export 50 T.T.	INASA REYNOLD	6040 7050 RT	PROFILS SYSTEMES	Serie 13
ALU-MEC	Synthesis	INDINVEST	Gold 400 Gold 500	PROVEEDORA DE ALUMINIO S.A.	Optima 1922
ALUMAFEL	Forma serie 31025	INESPAL	Afill T.T. Alfil	R.C. SYSTEM	Performance 51
ALUSUISSE	Alsec 2000 Finestra 59	KAWNEER	System 1423 System 1473	REYNAERS	Thermo system 50/57 Parallel system 50
ANODIL	Arkial serie BX			SUNPARADISE	Fiesta 42 Thermo 60
A.SER.	Riviera serie rinforzata	K.L. ALUMINIO S.A.	B.W. 50/52 B.W. R. 57	TECHNAL	Pbi Pxi apertura esterna Pbi new
BODEGA	Bga 50	LAMINEX	Star ST 15/17 Euro star 9010	TRAFILERIA EMILIANE	Eku 64 T.T.
CORTIZO	Sistema cortizo 60	LA SEMILAVORATI	Lido system complanare	VAN BEVEREN	Serie R 50 e Bb 50
EQUIPE	Emal 40w	METRA	NC 68 superthermic	WICONA	Serie 70000 L/50 apertura esterna
EKONAL	i 70 apertura esterna	MORELLI	MA 8300 MA 9500		
EXLABESA	Platino puerta PR 7200				

## A8102AX - A8302AX

ALCAN	Green porta 1 anta Green porta 1 anta con rip. Open porta 1 anta con rip. Open porta 1 anta	HYDRO ALLUMINIO	Domal stopper/PG porta Domal break PA 52 porta Domal shops/break 70 porta	OCMA	SV 47 porta 1 anta SV 47 porta 2 ante SV 62 porta 1 anta SV 62 2 ante SV 62 T.T. porta FC 60 T.T. porta
ALCOA	Alublind	INDINVEST	Gold 500 porta Gold 600 T.T. porta	PASSERINI	Ekip 53 thermo porta
ALL.CO	All.co 5 porta All.co 5 T.T. porta Sicurblind	K.L. ALUMINIO S.A.	B.W. 52 puerta	PROFILS SYSTEMES	Serie 16
ALUMAFEL	Forma serie 31020	LA SEMILAVORATI	Lido porta	PROVEEDORA DE ALUMINIO S.A.	Optima 1992/45
ALUSUISSE	Alsec 2000 59 porta Alsec 2000 69 porta	METRA	NC 45 international porta NC 50 nuovo porta NC 55 thermic porta NC 68 superthermic porta Superblindo porta	RC SYSTEM	Porta 93-3000 R.C. confort 60 porta Aleurotherm 55 N0983 porta
ALUK	Alu-k 45 porta Alu-k N53 porta	MORELLI	MA 9700 porta	REYNOLD	Reynotherm 55 porta apertura esterna
EXLABESA	3000 puerta	NEW-TEC	New-tec 68 super thermal break porta New-tec 50 New-tec 52 T.T. porta	SCHUCO	Royal 54
FWB BROKELMANN ALUMINIUM	Serie TF porta			WICONA	Serie 5000 apertura esterna
GALIPAN	V. 8000 puerta				

## A8104AX - A8304AX

ALCAN	Point	INTREX	Overlay	PASSERINI	Ekip 40 evoluzione Ekip 40 sormonto Ekip 50 sormonto
ALFA ALLUMINIO	Euro 40 complanare Euro 40 sormonto	METRA	NC 40 nuovo sormonto 1 anta e sormonto con riporto NC 50 nuovo sormonto	TRAFILERIE EMILIANE	Sistema 1 sormonto 1 anta complanare esterno 1 anta
ALL.CO	All.co 5/P4 sormonto zeta reversibile All.co 5 T.T. sormonto Global 48 sormonto	MORELLI NEW-TEC	MA 9600 sormonto New-Tec 50 New-Tec 52 T.T.		
AL-SYSTEM					