

■ **CILINDRI DA APPLICARE**
RIM CYLINDERS



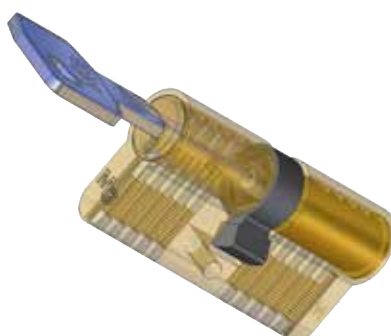
P. 33

■ **CILINDRI DA INFILARE**
MORTICE CYLINDERS

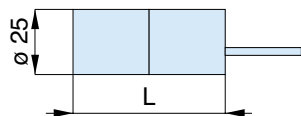


P. 33

- ✓ **Corpo in ottone**
Brass body
- ✓ **Perni e controperni in ottone**
Brass pins
- ✓ **Perni antitrapano**
Antidrilling steel pins
- ✓ **Molle in acciaio inox**
Stainless steel springs
- ✓ **Camma DIN (cilindri da infilare)**
DIN cam (mortice cylinders)
- ✓ **3 chiavi reversibili in ottone nichelato**
3 reversible nickel plated brass keys
- ✓ **Card**
Card
- ✓ **Vite di fissaggio**
Fixing screw



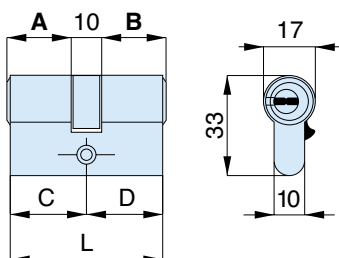
Cilindro per art. 712
Cylinder for art. 712



X8

	A	B	C	D	L	codice code	euro	
8					50	X12500 000		1
con 5 chiavi with 5 keys					 050		
nichel opaco matt nickel					 N00		

Doppio cilindro
Double cylinder

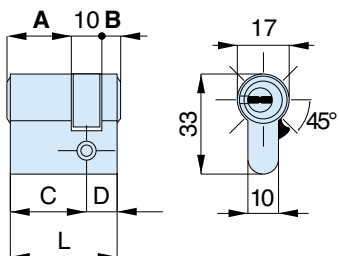


X8

	A	B	C	D	L	codice code	euro	
8	27	10	27	31	31	62	X80640 000	1
8	27	10	31	31	35	66	X80680 000	1
8	31	10	31	35	35	70	X80720 000	1
8	27	10	37	31	41	72	X80740 000	1
8	27	10	41	31	45	76	X80781 000	1
8	31	10	37	35	41	76	X80782 000	1
8	31	10	41	35	45	80	X80820 000	1
8	27	10	47	31	51	82	X80841 000	1
8	37	10	37	41	41	82	X80842 000	1
8	27	10	51	31	55	86	X80881 000	1
8	31	10	47	35	51	86	X80882 000	1
8	37	10	41	41	45	86	X80883 000	1
8	31	10	51	35	55	90	X80921 000	1
8	41	10	41	45	45	90	X80922 000	1
8	27	10	57	31	61	92	X80941 000	1
8	37	10	47	41	51	92	X80942 000	1
8	37	10	51	41	55	96	X80981 000	1
8	41	10	47	45	51	96	X80982 000	1
8	31	10	57	35	61	96	X80983 000	1
8	41	10	51	45	55	100	X80020 000	1
8	27	10	67	31	71	102	X80041 000	1
8	37	10	57	41	61	102	X80042 000	1
8	47	10	47	51	51	102	X80043 000	1
8	37	10	67	41	71	112	X80142 000	1
8	47	10	57	51	61	112	X80143 000	1
8	47	10	67	51	71	122	X80243 000	1
con 5 chiavi with 5 keys					 050		
nichel opaco matt nickel					 N00		
frizionato frictioned					 00X		



Mezzo cilindro con camma regolabile in 8 posizioni
Half cylinder with adjustable cam in 8 positions

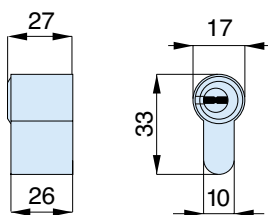


X8

	A	B	C	D	L	codice code	euro	
7	21	10	5	25	10	35	X81360 000	1
8	27	10	5	31	10	41	X81420 000	1
8	31	10	5	35	10	45	X81460 000	1
8	37	10	5	41	10	51	X81520 000	1
8	41	10	5	45	10	55	X81560 000	1
8	47	10	5	51	10	61	X81620 000	1
8	57	10	5	61	10	71	X81720 000	1
8	67	10	5	71	10	81	X81820 000	1
con 5 chiavi with 5 keys					 050		
nichel opaco matt nickel					 N00		

Mezzo cilindro per lucchetto di sicurezza X92

Half cylinder for security padlock X92

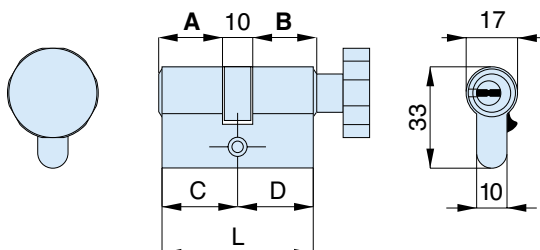


X8

	A	B	C	D	L	codice code	euro	
						X81270 000		1
con 5 chiavi	with 5 keys				 050		
niche opaco	matt nickel				 N00		

Doppio cilindro con pomolo ottone

Double cylinder with brass knob



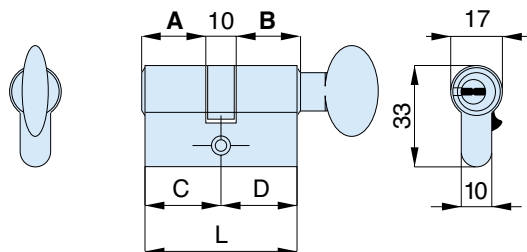
X8

	A	B	C	D	L	codice code	euro	
8	27	10	27	31	31	62	X85640 00R	1
8	27	10	31	31	35	66	X85681 00R	1
8	31	10	27	35	31	66	X85682 00R	1
8	31	10	31	35	35	70	X85720 00R	1
8	27	10	37	31	41	72	X85741 00R	1
8	37	10	27	41	31	72	X85742 00R	1
8	27	10	41	31	45	76	X85781 00R	1
8	41	10	27	45	31	76	X85782 00R	1
8	31	10	37	35	41	76	X85783 00R	1
8	37	10	31	41	35	76	X85784 00R	1
8	31	10	41	35	45	80	X85821 00R	1
8	41	10	31	45	35	80	X85822 00R	1
8	27	10	47	31	51	82	X85841 00R	1
8	47	10	27	51	31	82	X85842 00R	1
8	37	10	37	41	41	82	X85843 00R	1
8	27	10	51	31	55	86	X85881 00R	1
8	31	10	47	35	51	86	X85882 00R	1
8	37	10	41	41	45	86	X85883 00R	1
8	41	10	37	45	41	86	X85884 00R	1
8	31	10	51	35	55	90	X85921 00R	1
8	41	10	41	45	45	90	X85922 00R	1
8	27	10	57	31	61	92	X85941 00R	1
8	37	10	47	41	51	92	X85942 00R	1
8	37	10	51	41	55	96	X85981 00R	1
8	41	10	47	45	51	96	X85982 00R	1
8	41	10	51	45	55	100	X85020 00R	1
8	27	10	67	31	71	102	X85041 00R	1
8	37	10	57	41	61	102	X85042 00R	1
8	47	10	47	51	51	102	X85043 00R	1
8	37	10	67	41	71	112	X85142 00R	1
8	47	10	57	51	61	112	X85143 00R	1
8	47	10	67	51	71	122	X85243 00R	1
8	67	10	47	71	51	122	X85245 00R	1
con 5 chiavi	with 5 keys				 05R		
niche opaco	matt nickel				 NOR		

Doppio cilindro con pomolo ottone
Double cylinder with brass knob

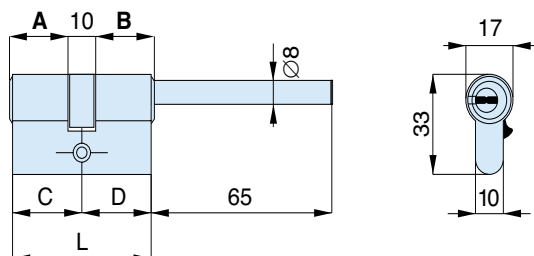


X8



	A	B	C	D	L	codice code	euro	
8	27	10	27	31	31	62	X85640 00F	1
8	27	10	31	31	35	66	X85681 00F	1
8	31	10	27	35	31	66	X85682 00F	1
8	31	10	31	35	35	70	X85720 00F	1
8	27	10	37	31	41	72	X85741 00F	1
8	37	10	27	41	31	72	X85742 00F	1
8	27	10	41	31	45	76	X85781 00F	1
8	41	10	27	45	31	76	X85782 00F	1
8	31	10	37	35	41	76	X85783 00F	1
8	37	10	31	41	35	76	X85784 00F	1
8	31	10	41	35	45	80	X85821 00F	1
8	41	10	31	45	35	80	X85822 00F	1
8	27	10	47	31	51	82	X85841 00F	1
8	47	10	27	51	31	82	X85842 00F	1
8	37	10	37	41	41	82	X85843 00F	1
8	27	10	51	31	55	86	X85881 00F	1
8	31	10	47	35	51	86	X85882 00F	1
8	37	10	41	41	45	86	X85883 00F	1
8	41	10	37	45	41	86	X85884 00F	1
8	31	10	51	35	55	90	X85921 00F	1
8	41	10	41	45	45	90	X85922 00F	1
8	27	10	57	31	61	92	X85941 00F	1
8	37	10	47	41	51	92	X85942 00F	1
8	37	10	51	41	55	96	X85981 00F	1
8	41	10	47	45	51	96	X85982 00F	1
8	41	10	51	45	55	100	X85020 00F	1
8	27	10	67	31	71	102	X85041 00F	1
8	37	10	57	41	61	102	X85042 00F	1
8	47	10	47	51	51	102	X85043 00F	1
8	37	10	67	41	71	112	X85142 00F	1
8	47	10	57	51	61	112	X85143 00F	1
8	47	10	67	51	71	122	X85243 00F	1
8	67	10	47	71	51	122	X85245 00F	1
con 5 chiavi with 5 keys					 05F		
nichel opaco matt nickel					 N0F		

Doppio cilindro predisposto pomolo
Double cylinder with knob provision



X8

	A	B	C	D	L	codice code	euro	
8	27	10	27	31	31	62	X85640 00L	1
8	31	10	27	35	31	66	X85680 00L	1
8	37	10	27	41	31	72	X85740 00L	1
8	41	10	27	45	31	76	X85780 00L	1
8	47	10	27	51	31	82	X85840 00L	1
8	51	10	27	55	31	86	X85880 00L	1
8	57	10	27	61	31	92	X85940 00L	1
8	67	10	27	71	31	102	X85040 00L	1

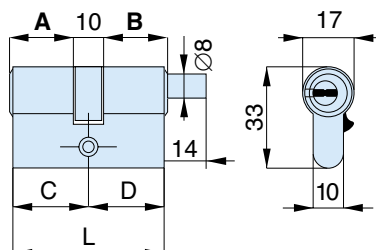
con 5 chiavi with 5 keys

..... 05L

nichel opaco matt nickel

..... NOL

Doppio cilindro predisposto pomolo
Double cylinder with knob provision



X8

	A	B	C	D	L	codice code	euro	
8	27	10	27	31	31	62	X85640 00C	1
8	27	10	31	31	35	66	X85681 00C	1
8	31	10	27	35	31	66	X85682 00C	1
8	31	10	31	35	35	70	X85720 00C	1
8	27	10	37	31	41	72	X85741 00C	1
8	37	10	27	41	31	72	X85742 00C	1
8	27	10	41	31	45	76	X85781 00C	1
8	41	10	27	45	31	76	X85782 00C	1
8	31	10	37	35	41	76	X85783 00C	1
8	37	10	31	41	35	76	X85784 00C	1
8	31	10	41	35	45	80	X85821 00C	1
8	41	10	31	45	35	80	X85822 00C	1
8	27	10	47	31	51	82	X85841 00C	1
8	47	10	27	51	31	82	X85842 00C	1
8	37	10	37	41	41	82	X85843 00C	1
8	27	10	51	31	55	86	X85881 00C	1
8	31	10	47	35	51	86	X85882 00C	1
8	37	10	41	41	45	86	X85883 00C	1
8	41	10	37	45	41	86	X85884 00C	1
8	31	10	51	35	55	90	X85921 00C	1
8	41	10	41	45	45	90	X85922 00C	1
8	27	10	57	31	61	92	X85941 00C	1
8	37	10	47	41	51	92	X85942 00C	1
8	37	10	51	41	55	96	X85981 00C	1
8	41	10	47	45	51	96	X85982 00C	1
8	41	10	51	45	55	100	X85020 00C	1
8	27	10	67	31	71	102	X85041 00C	1
8	37	10	57	41	61	102	X85042 00C	1
8	47	10	47	51	51	102	X85043 00C	1
8	37	10	67	41	71	112	X85142 00C	1
8	47	10	57	51	61	112	X85143 00C	1

con 5 chiavi with 5 keys

..... 05C

nichel opaco matt nickel

..... NOC

■ **CILINDRI DA APPLICARE**
RIM CYLINDERS



P. 39

■ **CILINDRI DA INFILARE**
MORTICE CYLINDERS



P. 40

■ **CILINDRI DA INFILARE CON RINFORZO E
TAGLIO ANTITORSIONE BREVETTATO**
MORTICE CYLINDERS WITH PATENTED
REINFORCE AND CUT AGAINST BREAKING



P. 44

■ **CILINDRI OVALI (SOLO 5 PERNI)**
OVAL CYLINDERS (ONLY 5 PINS)



P. 48

■ **CILINDRI Ø 26 (15 PERNI)**
Ø 26 CYLINDERS (15 PINS)



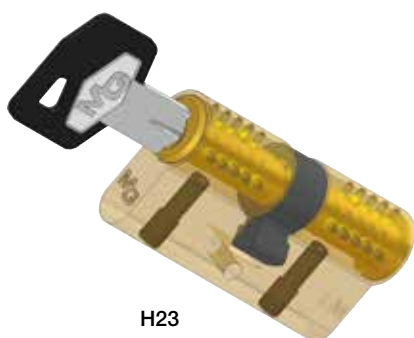
P. 48

■ **CILINDRI Ø 22 (SOLO 5 PERNI)**
Ø 22 CYLINDERS (ONLY 5 PINS)

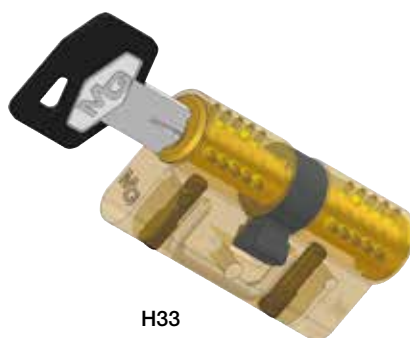


P. 48

- ✓ **Sistema a 15 perni attivi**
System with 15 active pins
- ✓ **Corpo in ottone nichelato**
Nickel plated brass body
- ✓ **Perni in acciaio temprato**
Hardened steel pins
- ✓ **Controperni in acciaio inox**
Stainless steel top pins
- ✓ **Molle in acciaio inox**
Stainless steel springs
- ✓ **Camma DIN 30° (cilindri da infilare)**
DIN 30° cam (mortice cylinders)
- ✓ **3 chiavi reversibili in alpaca con impugnatura rivestita in plastica, collo lungo e numerazione a codice indiretto sulla testa**
3 reversible keys in nickel silver with plastic-coated grip, long neck numbered on key head
- ✓ **Code card**
Code card
- ✓ **Vite di fissaggio**
Fixing screw

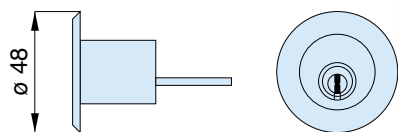


H23



H33

Cilindro per art. 711
Cylinder for art. 711

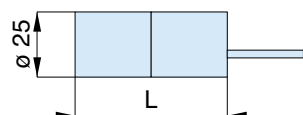


HS

	A	B	C	D	L	codice code	euro	
15						H11000 N00		1
					 N50		

con 5 chiavi with 5 keys

Cilindro per art. 712
Cylinder for art. 712

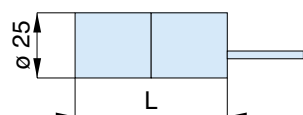
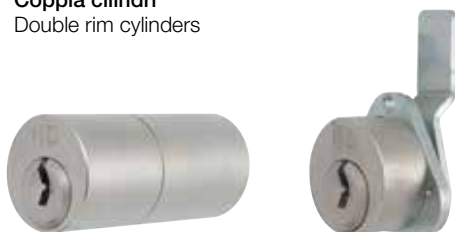


HS

	A	B	C	D	L	codice code	euro	
15					50	H12500 N00		1
					 N50		

con 5 chiavi with 5 keys

Coppia cilindri
Double rim cylinders

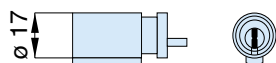
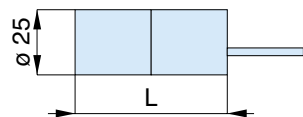


HS

	A	B	C	D	L	codice code	euro	
15					50	H14500 N00		1
					 N50		

con 5 chiavi with 5 keys

Coppia cilindri
Double rim cylinders



HS

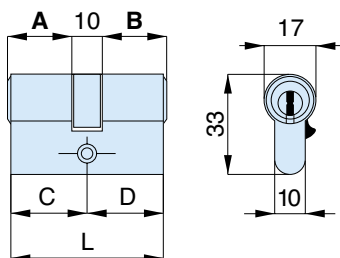
	A	B	C	D	L	codice code	euro	
15					50	H14501 N00		1
					 N50		

con 5 chiavi with 5 keys

Doppio cilindro Double cylinder



HS



	A	B	C	D	L	codice code	euro	
15	27	10	27	31	31	62	H23640 N00	1
15	27	10	31	31	35	66	H23680 N00	1
15	31	10	31	35	35	70	H23720 N00	1
15	27	10	37	31	41	72	H23740 N00	1
15	27	10	41	31	45	76	H23781 N00	1
15	31	10	37	35	41	76	H23782 N00	1
15	31	10	41	35	45	80	H23820 N00	1
15	27	10	47	31	51	82	H23841 N00	1
15	37	10	37	41	41	82	H23842 N00	1
15	27	10	51	31	55	86	H23881 N00	1
15	31	10	47	35	51	86	H23882 N00	1
15	37	10	41	41	45	86	H23883 N00	1
15	31	10	51	35	55	90	H23921 N00	1
15	41	10	41	45	45	90	H23922 N00	1
15	27	10	57	31	61	92	H23941 N00	1
15	37	10	47	41	51	92	H23942 N00	1
15	37	10	51	41	55	96	H23981 N00	1
15	41	10	47	45	51	96	H23982 N00	1
15	31	10	57	35	61	96	H23983 N00	1
15	41	10	51	45	55	100	H23020 N00	1
15	27	10	67	31	71	102	H23041 N00	1
15	37	10	57	41	61	102	H23042 N00	1
15	47	10	47	51	51	102	H23043 N00	1
15	27	10	77	31	81	112	H23141 N00	1
15	37	10	67	41	71	112	H23142 N00	1
15	47	10	57	51	61	112	H23143 N00	1
15	47	10	67	51	71	122	H23243 N00	1

con 5 chiavi with 5 keys

..... N50

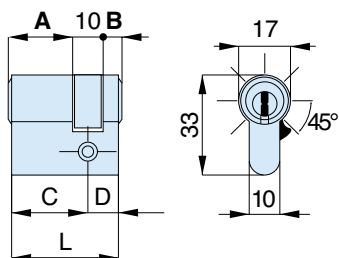
frizionato frictioned

..... NOX

Mezzo cilindro con camma regolabile in 8 posizioni Half cylinder with adjustable cam in 8 positions



HS



	A	B	C	D	L	codice code	euro	
15	27	10	5	31	10	41	H24420 N00	1
15	31	10	5	35	10	45	H24460 N00	1
15	37	10	5	41	10	51	H24520 N00	1
15	41	10	5	45	10	55	H24560 N00	1
15	47	10	5	51	10	61	H24620 N00	1
15	57	10	5	61	10	71	H24720 N00	1
15	67	10	5	71	10	81	H24820 N00	1
15	77	10	5	81	10	91	H24920 N00	1

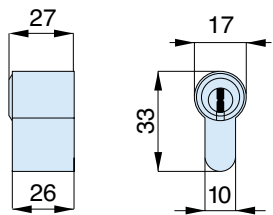
con 5 chiavi with 5 keys

..... N50

Mezzo cilindro per lucchetto di sicurezza H92 - nickel opaco
Half cylinder for security padlock H92 - matt nickel



HS



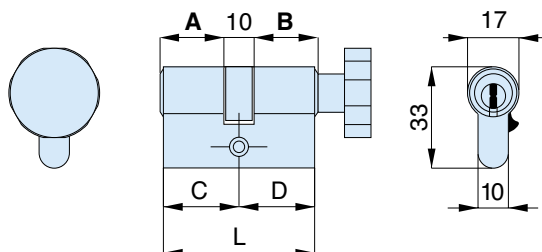
	A	B	C	D	L	codice code	euro	
15						H24270 N00		1
					 N50		

con 5 chiavi with 5 keys

Doppio cilindro con pomolo ottone nichelato opaco
Double cylinder with matt nickel-plated brass knob



HS

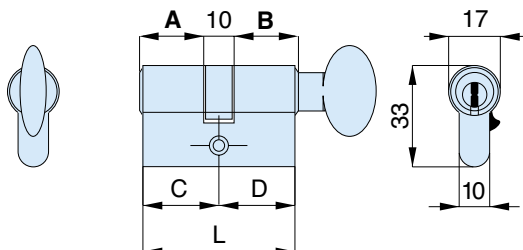


	A	B	C	D	L	codice code	euro	
15	27	10	27	31	31	62	H29640 N0R	1
15	27	10	31	31	35	66	H29681 N0R	1
15	31	10	27	35	31	66	H29682 N0R	1
15	31	10	31	35	35	70	H29720 N0R	1
15	27	10	37	31	41	72	H29741 N0R	1
15	37	10	27	41	31	72	H29742 N0R	1
15	27	10	41	31	45	76	H29781 N0R	1
15	41	10	27	45	31	76	H29782 N0R	1
15	31	10	37	35	41	76	H29783 N0R	1
15	37	10	31	41	35	76	H29784 N0R	1
15	31	10	41	35	45	80	H29821 N0R	1
15	41	10	31	45	35	80	H29822 N0R	1
15	27	10	47	31	51	82	H29841 N0R	1
15	47	10	27	51	31	82	H29842 N0R	1
15	37	10	37	41	41	82	H29843 N0R	1
15	27	10	51	31	55	86	H29881 N0R	1
15	31	10	47	35	51	86	H29882 N0R	1
15	37	10	41	41	45	86	H29883 N0R	1
15	41	10	37	45	41	86	H29884 N0R	1
15	31	10	51	35	55	90	H29921 N0R	1
15	41	10	41	45	45	90	H29922 N0R	1
15	27	10	57	31	61	92	H29941 N0R	1
15	37	10	47	41	51	92	H29942 N0R	1
15	37	10	51	41	55	96	H29981 N0R	1
15	41	10	47	45	51	96	H29982 N0R	1
15	41	10	51	45	55	100	H29020 N0R	1
15	27	10	67	31	71	102	H29041 N0R	1
15	37	10	57	41	61	102	H29042 N0R	1
15	47	10	47	51	51	102	H29043 N0R	1
15	27	10	77	31	81	112	H29141 N0R	1
15	37	10	67	41	71	112	H29142 N0R	1
15	47	10	57	51	61	112	H29143 N0R	1

con 5 chiavi with 5 keys

..... **N5R**

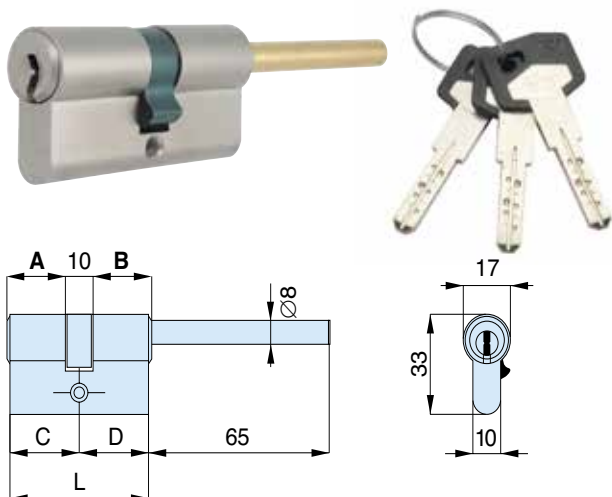
Doppio cilindro con pomolo ottone nichelato opaco
Double cylinder with matt nickel-plated brass knob



HS

	A	B	C	D	L	codice code	euro	
15	27	10	27	31	31	62	H29640 N0F	1
15	27	10	31	31	35	66	H29681 N0F	1
15	31	10	27	35	31	66	H29682 N0F	1
15	31	10	31	35	35	70	H29720 N0F	1
15	27	10	37	31	41	72	H29741 N0F	1
15	37	10	27	41	31	72	H29742 N0F	1
15	27	10	41	31	45	76	H29781 N0F	1
15	41	10	27	45	31	76	H29782 N0F	1
15	31	10	37	35	41	76	H29783 N0F	1
15	37	10	31	41	35	76	H29784 N0F	1
15	31	10	41	35	45	80	H29821 N0F	1
15	41	10	31	45	35	80	H29822 N0F	1
15	27	10	47	31	51	82	H29841 N0F	1
15	47	10	27	51	31	82	H29842 N0F	1
15	37	10	37	41	41	82	H29843 N0F	1
15	27	10	51	31	55	86	H29881 N0F	1
15	31	10	47	35	51	86	H29882 N0F	1
15	37	10	41	41	45	86	H29883 N0F	1
15	41	10	37	45	41	86	H29884 N0F	1
15	31	10	51	35	55	90	H29921 N0F	1
15	41	10	41	45	45	90	H29922 N0F	1
15	27	10	57	31	61	92	H29941 N0F	1
15	37	10	47	41	51	92	H29942 N0F	1
15	37	10	51	41	55	96	H29981 N0F	1
15	41	10	47	45	51	96	H29982 N0F	1
15	41	10	51	45	55	100	H29020 N0F	1
15	27	10	67	31	71	102	H29041 N0F	1
15	37	10	57	41	61	102	H29042 N0F	1
15	47	10	47	51	51	102	H29043 N0F	1
15	27	10	77	31	81	112	H29141 N0F	1
15	37	10	67	41	71	112	H29142 N0F	1
15	47	10	57	51	61	112	H29143 N0F	1
con 5 chiavi with 5 keys					 N5F		

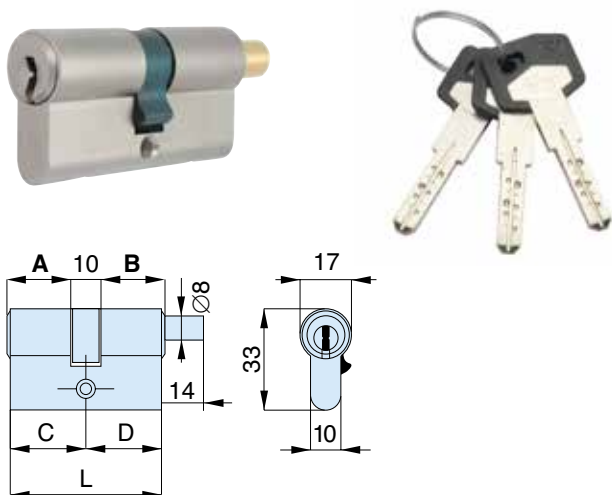
Doppio cilindro predisposto pomolo
Double cylinder with knob provision



HS

	A	B	C	D	L	codice code	euro	
15	27	10	27	31	31	62	H29640 N0L	1
15	31	10	27	35	31	66	H29680 N0L	1
15	37	10	27	41	31	72	H29740 N0L	1
15	41	10	27	45	31	76	H29780 N0L	1
15	47	10	27	51	31	82	H29840 N0L	1
15	51	10	27	55	31	86	H29880 N0L	1
15	57	10	27	61	31	92	H29940 N0L	1
15	67	10	27	71	31	102	H29040 N0L	1
15	77	10	27	81	31	112	H29140 N0L	1
con 5 chiavi with 5 keys					 N5L		

Doppio cilindro predisposto pomolo
Double cylinder with knob provision



HS

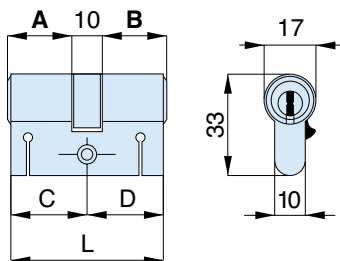
	A	B	C	D	L	codice code	euro	
15	27	10	27	31	31	62	H29640 N0C	1
15	27	10	31	31	35	66	H29681 N0C	1
15	31	10	27	35	31	66	H29682 N0C	1
15	31	10	31	35	35	70	H29720 N0C	1
15	27	10	37	31	41	72	H29741 N0C	1
15	37	10	27	41	31	72	H29742 N0C	1
15	27	10	41	31	45	76	H29781 N0C	1
15	41	10	27	45	31	76	H29782 N0C	1
15	31	10	37	35	41	76	H29783 N0C	1
15	37	10	31	41	35	76	H29784 N0C	1
15	31	10	41	35	45	80	H29821 N0C	1
15	41	10	31	45	35	80	H29822 N0C	1
15	27	10	47	31	51	82	H29841 N0C	1
15	47	10	27	51	31	82	H29842 N0C	1
15	37	10	37	41	41	82	H29843 N0C	1
15	27	10	51	31	55	86	H29881 N0C	1
15	31	10	47	35	51	86	H29882 N0C	1
15	37	10	41	41	45	86	H29883 N0C	1
15	41	10	37	45	41	86	H29884 N0C	1
15	31	10	51	35	55	90	H29921 N0C	1
15	41	10	41	45	45	90	H29922 N0C	1
15	27	10	57	31	61	92	H29941 N0C	1
15	37	10	47	41	51	92	H29942 N0C	1
15	37	10	51	41	55	96	H29981 N0C	1
15	41	10	47	45	51	96	H29982 N0C	1
15	41	10	51	45	55	100	H29020 N0C	1
15	27	10	67	31	71	102	H29041 N0C	1
15	37	10	57	41	61	102	H29042 N0C	1
15	47	10	47	51	51	102	H29043 N0C	1
15	27	10	77	31	81	112	H29141 N0C	1
15	37	10	67	41	71	112	H29142 N0C	1
15	47	10	57	51	61	112	H29143 N0C	1
con 5 chiavi with 5 keys					 N5C		

Doppio cilindro con rinforzo e taglio

Double cylinder with reinforce and cut



HS



	A	B	C	D	L	codice code	euro	
15	27	10	27	31	31	62	H33640 N00	1
15	27	10	31	31	35	66	H33680 N00	1
15	31	10	31	35	35	70	H33720 N00	1
15	27	10	37	31	41	72	H33740 N00	1
15	27	10	41	31	45	76	H33781 N00	1
15	31	10	37	35	41	76	H33782 N00	1
15	31	10	41	35	45	80	H33820 N00	1
15	27	10	47	31	51	82	H33841 N00	1
15	37	10	37	41	41	82	H33842 N00	1
15	27	10	51	31	55	86	H33881 N00	1
15	31	10	47	35	51	86	H33882 N00	1
15	37	10	41	41	45	86	H33883 N00	1
15	31	10	51	35	55	90	H33921 N00	1
15	41	10	41	45	45	90	H33922 N00	1
15	27	10	57	31	61	92	H33941 N00	1
15	37	10	47	41	51	92	H33942 N00	1
15	37	10	51	41	55	96	H33981 N00	1
15	41	10	47	45	51	96	H33982 N00	1
15	31	10	57	35	61	96	H33983 N00	1
15	41	10	51	45	55	100	H33020 N00	1
15	27	10	67	31	71	102	H33041 N00	1
15	37	10	57	41	61	102	H33042 N00	1
15	47	10	47	51	51	102	H33043 N00	1
15	27	10	77	31	81	112	H33141 N00	1
15	37	10	67	41	71	112	H33142 N00	1
15	47	10	57	51	61	112	H33143 N00	1
15	47	10	67	51	71	122	H33243 N00	1

con 5 chiavi with 5 keys

..... N50

frizionato frictioned

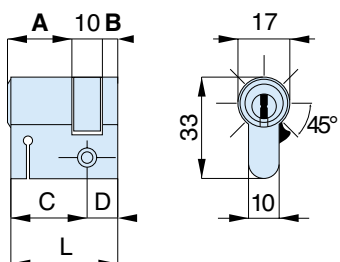
..... NOX

Mezzo cilindro con taglio e camma regolabile in 8 posizioni

Half cylinder with cut and adjustable cam in 8 position



HS



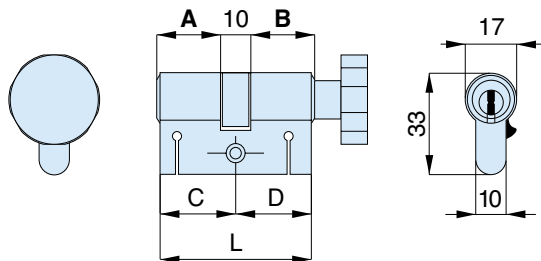
	A	B	C	D	L	codice code	euro	
15	27	10	5	31	10	41	H34420 N00	1
15	31	10	5	35	10	45	H34460 N00	1
15	37	10	5	41	10	51	H34520 N00	1
15	41	10	5	45	10	55	H34560 N00	1
15	47	10	5	51	10	61	H34620 N00	1
15	57	10	5	61	10	71	H34720 N00	1
15	67	10	5	71	10	81	H34820 N00	1
15	77	10	5	81	10	91	H34920 N00	1

con 5 chiavi with 5 keys

..... N50

Doppio cilindro con pomolo ottone nichelato opaco con rinforzo e taglio
Double cylinder with matt nickel-plated brass knob with reinforce and cut

HS



	A	B	C	D	L	codice code	euro	
15	27	10	27	31	31	62	H39640 N0R	1
15	27	10	31	31	35	66	H39681 N0R	1
15	31	10	27	35	31	66	H39682 N0R	1
15	31	10	31	35	35	70	H39720 N0R	1
15	27	10	37	31	41	72	H39741 N0R	1
15	37	10	27	41	31	72	H39742 N0R	1
15	27	10	41	31	45	76	H39781 N0R	1
15	41	10	27	45	31	76	H39782 N0R	1
15	31	10	37	35	41	76	H39783 N0R	1
15	37	10	31	41	35	76	H39784 N0R	1
15	31	10	41	35	45	80	H39821 N0R	1
15	41	10	31	45	35	80	H39822 N0R	1
15	27	10	47	31	51	82	H39841 N0R	1
15	47	10	27	51	31	82	H39842 N0R	1
15	37	10	37	41	41	82	H39843 N0R	1
15	27	10	51	31	55	86	H39881 N0R	1
15	31	10	47	35	51	86	H39882 N0R	1
15	37	10	41	41	45	86	H39883 N0R	1
15	41	10	37	45	41	86	H39884 N0R	1
15	31	10	51	35	55	90	H39921 N0R	1
15	41	10	41	45	45	90	H39922 N0R	1
15	27	10	57	31	61	92	H39941 N0R	1
15	37	10	47	41	51	92	H39942 N0R	1
15	37	10	51	41	55	96	H39981 N0R	1
15	41	10	47	45	51	96	H39982 N0R	1
15	41	10	51	45	55	100	H39020 N0R	1
15	27	10	67	31	71	102	H39041 N0R	1
15	37	10	57	41	61	102	H39042 N0R	1
15	47	10	47	51	51	102	H39043 N0R	1
15	27	10	77	31	81	112	H39141 N0R	1
15	37	10	67	41	71	112	H39142 N0R	1
15	47	10	57	51	61	112	H39143 N0R	1

con 5 chiavi with 5 keys

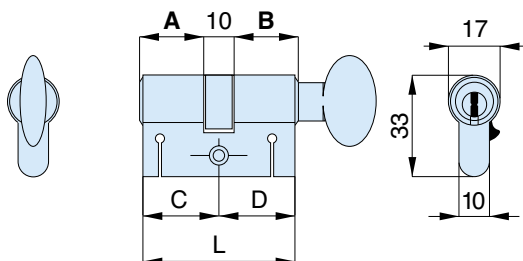
..... N5R

CILINDRI DI SICUREZZA DA INFILARE
security mortice cylinders

Doppio cilindro con pomolo ottone nichelato opaco con rinforzo e taglio
Double cylinder with matt nickel-plated brass knob with reinforce and cut



HS



	A	B	C	D	L	codice code	euro	
15	27	10	27	31	31	62	H39640 N0F	1
15	27	10	31	31	35	66	H39681 N0F	1
15	31	10	27	35	31	66	H39682 N0F	1
15	31	10	31	35	35	70	H39720 N0F	1
15	27	10	37	31	41	72	H39741 N0F	1
15	37	10	27	41	31	72	H39742 N0F	1
15	27	10	41	31	45	76	H39781 N0F	1
15	41	10	27	45	31	76	H39782 N0F	1
15	31	10	37	35	41	76	H39783 N0F	1
15	37	10	31	41	35	76	H39784 N0F	1
15	31	10	41	35	45	80	H39821 N0F	1
15	41	10	31	45	35	80	H39822 N0F	1
15	27	10	47	31	51	82	H39841 N0F	1
15	47	10	27	51	31	82	H39842 N0F	1
15	37	10	37	41	41	82	H39843 N0F	1
15	27	10	51	31	55	86	H39881 N0F	1
15	31	10	47	35	51	86	H39882 N0F	1
15	37	10	41	41	45	86	H39883 N0F	1
15	41	10	37	45	41	86	H39884 N0F	1
15	31	10	51	35	55	90	H39921 N0F	1
15	41	10	41	45	45	90	H39922 N0F	1
15	27	10	57	31	61	92	H39941 N0F	1
15	37	10	47	41	51	92	H39942 N0F	1
15	37	10	51	41	55	96	H39981 N0F	1
15	41	10	47	45	51	96	H39982 N0F	1
15	41	10	51	45	55	100	H39020 N0F	1
15	27	10	67	31	71	102	H39041 N0F	1
15	37	10	57	41	61	102	H39042 N0F	1
15	47	10	47	51	51	102	H39043 N0F	1
15	27	10	77	31	81	112	H39141 N0F	1
15	37	10	67	41	71	112	H39142 N0F	1
15	47	10	57	51	61	112	H39143 N0F	1

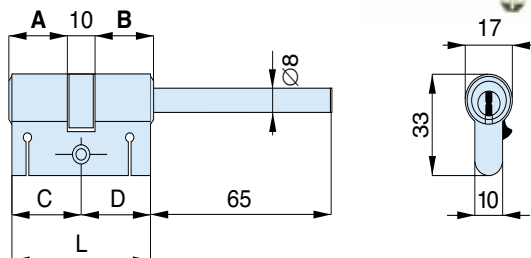
con 5 chiavi with 5 keys

..... N5F

Doppio cilindro predisposto pomolo con rinforzo e taglio
Double cylinder with knob provision with reinforce and cut



HS

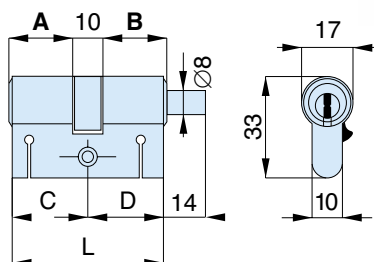


	A	B	C	D	L	codice code	euro	
15	27	10	27	31	31	62	H39640 N0L	1
15	31	10	27	35	31	66	H39680 N0L	1
15	37	10	27	41	31	72	H39740 N0L	1
15	41	10	27	45	31	76	H39780 N0L	1
15	47	10	27	51	31	82	H39840 N0L	1
15	51	10	27	55	31	86	H39880 N0L	1
15	57	10	27	61	31	92	H39940 N0L	1
15	67	10	27	71	31	102	H39040 N0L	1
15	77	10	27	81	31	112	H39140 N0L	1
con 5 chiavi with 5 keys					 N5L		

Doppio cilindro predisposto pomolo con rinforzo e taglio
Double cylinder with knob provision with reinforce and cut



HS



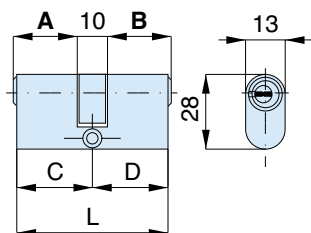
	A	B	C	D	L	codice code	euro	
15	27	10	27	31	31	62	H39640 N0C	1
15	27	10	31	31	35	66	H39681 N0C	1
15	31	10	27	35	31	66	H39682 N0C	1
15	31	10	31	35	35	70	H39720 N0C	1
15	27	10	37	31	41	72	H39741 N0C	1
15	37	10	27	41	31	72	H39742 N0C	1
15	27	10	41	31	45	76	H39781 N0C	1
15	41	10	27	45	31	76	H39782 N0C	1
15	31	10	37	35	41	76	H39783 N0C	1
15	37	10	31	41	35	76	H39784 N0C	1
15	31	10	41	35	45	80	H39821 N0C	1
15	41	10	31	45	35	80	H39822 N0C	1
15	27	10	47	31	51	82	H39841 N0C	1
15	47	10	27	51	31	82	H39842 N0C	1
15	37	10	37	41	41	82	H39843 N0C	1
15	27	10	51	31	55	86	H39881 N0C	1
15	31	10	47	35	51	86	H39882 N0C	1
15	37	10	41	41	45	86	H39883 N0C	1
15	41	10	37	45	41	86	H39884 N0C	1
15	31	10	51	35	55	90	H39921 N0C	1
15	41	10	41	45	45	90	H39922 N0C	1
15	27	10	57	31	61	92	H39941 N0C	1
15	37	10	47	41	51	92	H39942 N0C	1
15	37	10	51	41	55	96	H39981 N0C	1
15	41	10	47	45	51	96	H39982 N0C	1
15	41	10	51	45	55	100	H39020 N0C	1
15	27	10	67	31	71	102	H39041 N0C	1
15	37	10	57	41	61	102	H39042 N0C	1
15	47	10	47	51	51	102	H39043 N0C	1
15	27	10	77	31	81	112	H39141 N0C	1
15	37	10	67	41	71	112	H39142 N0C	1
15	47	10	57	51	61	112	H39143 N0C	1
con 5 chiavi with 5 keys					 N5C		

Doppio cilindro ovale

Double oval cylinder



HS



Per cilindri H18 sono previsti solo impianti a chiave uguale
For the cylinders H18 are foreseen just key alike systems

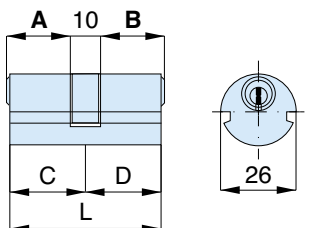
	A	B	C	D	L	codice code	euro	
5	27	10	27	31	31	62	H18640 N00	1
con 5 chiavi with 5 keys					 N50		

Doppio cilindro Ø 26

Double cylinder Ø 26



HS



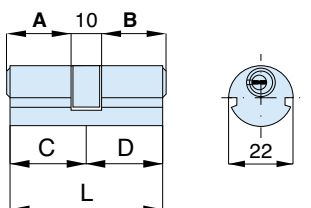
	A	B	C	D	L	codice code	euro	
15	27	10	27	31	31	62	H19640 N00	1
15	27	10	47	31	51	82	H19841 N00	1
con 5 chiavi with 5 keys					 N50		

Doppio cilindro Ø 22

Double cylinder Ø 22



HS



Per cilindri H20 sono previsti solo impianti a chiave uguale
For the cylinders H20 are foreseen just key alike systems

	A	B	C	D	L	codice code	euro	
5	27	10	27	31	31	62	H20640 N00	1
con 5 chiavi with 5 keys					 N50		

■ **CILINDRI DA APPLICARE**
RIM CYLINDERS



P. 51

■ **CILINDRI DA INFILARE**
MORTICE CYLINDERS



P. 52

■ **CILINDRI DA INFILARE CON RINFORZO E
TAGLIO ANTITORSIONE BREVETTATO**
MORTICE CYLINDERS WITH PATENTED
REINFORCE AND CUT AGAINST BREAKING



P. 56

■ **CILINDRI DA INFILARE MODULARI CON
TAGLIO ANTITORSIONE BREVETTATO**
MODULAR MORTICE CYLINDERS WITH
PATENTED CUT AGAINST BREAKING



P. 60

■ **CILINDRI OVALI (SOLO 5 PERNI)**
OVAL CYLINDERS (ONLY 5 PINS)



P. 64

■ **CILINDRI Ø 26 (15 PERNI)**
Ø 26 CYLINDERS (15 PINS)



P. 64

■ **CILINDRI Ø 22 (SOLO 5 PERNI)**
Ø 22 CYLINDERS (ONLY 5 PINS)



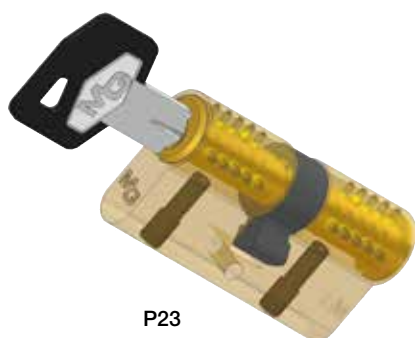
P. 64

SISTEMA BREVETTATO: CHIAVE CON ELEMENTO MOBILE PATENTED SYSTEM: KEY WITH MOBILE ELEMENT

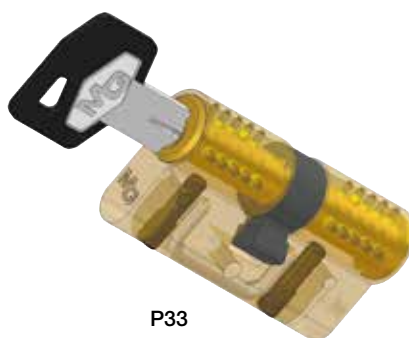
- ✓ **Sistema a 15 perni attivi**
System with 15 active pins
- ✓ **Corpo in ottone nichelato**
Nickel plated brass body
- ✓ **Perni in acciaio temprato**
Hardened steel pins
- ✓ **Controperni in acciaio inox**
Stainless steel top pins
- ✓ **Molle in acciaio inox**
Stainless steel springs
- ✓ **Camma DIN 30° (cilindri da infilare)**
DIN 30° cam (mortice cylinders)
- ✓ **3 chiavi reversibili in alpacca con impugnatura rivestita in plastica, collo lungo e numerazione a codice indiretto sulla testa**
3 reversible keys in nickel silver with plastic-coated grip, long neck numbered on key head
- ✓ **Security card**
Security card
- ✓ **Vite di fissaggio**
Fixing screw

Brevetto Europeo
Scadenza 2022

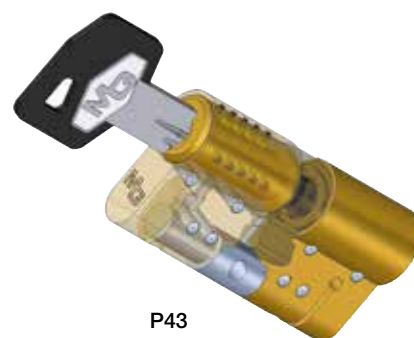
European Patent
Date filed 2022



P23

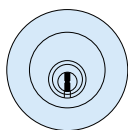
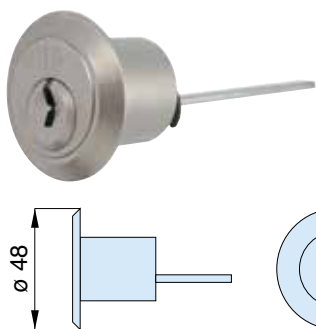


P33



P43

Cilindro per art. 711
Cylinder for art. 711

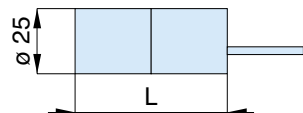


HSP

	A	B	C	D	L	codice code	euro	
15						P11000 N00		1
					 N50		

con 5 chiavi with 5 keys

Cilindro per art. 712
Cylinder for art. 712

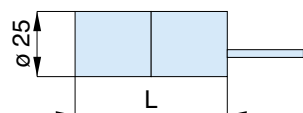


HSP

	A	B	C	D	L	codice code	euro	
15					50	P12500 N00		1
					 N50		

con 5 chiavi with 5 keys

Coppia cilindri
Double rim cylinder

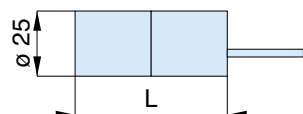


HSP

	A	B	C	D	L	codice code	euro	
15					50	P14500 N00		1
					 N50		

con 5 chiavi with 5 keys

Coppia cilindri
Double rim cylinder



HSP

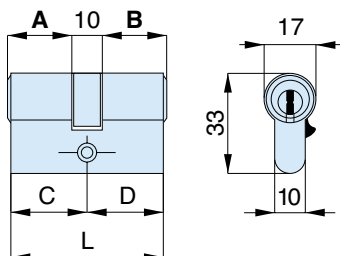
	A	B	C	D	L	codice code	euro	
15					50	P14501 N00		1
					 N50		

con 5 chiavi with 5 keys

Doppio cilindro Double cylinder



HSP



	A	B	C	D	L	codice code	euro	
15	27	10	27	31	31	62	P23640 N00	1
15	27	10	31	31	35	66	P23680 N00	1
15	31	10	31	35	35	70	P23720 N00	1
15	27	10	37	31	41	72	P23740 N00	1
15	27	10	41	31	45	76	P23781 N00	1
15	31	10	37	35	41	76	P23782 N00	1
15	31	10	41	35	45	80	P23820 N00	1
15	27	10	47	31	51	82	P23841 N00	1
15	37	10	37	41	41	82	P23842 N00	1
15	27	10	51	31	55	86	P23881 N00	1
15	31	10	47	35	51	86	P23882 N00	1
15	37	10	41	41	45	86	P23883 N00	1
15	31	10	51	35	55	90	P23921 N00	1
15	41	10	41	45	45	90	P23922 N00	1
15	27	10	57	31	61	92	P23941 N00	1
15	37	10	47	41	51	92	P23942 N00	1
15	37	10	51	41	55	96	P23981 N00	1
15	41	10	47	45	51	96	P23982 N00	1
15	31	10	57	35	61	96	P23983 N00	1
15	41	10	51	45	55	100	P23020 N00	1
15	27	10	67	31	71	102	P23041 N00	1
15	37	10	57	41	61	102	P23042 N00	1
15	47	10	47	51	51	102	P23043 N00	1
15	27	10	77	31	81	112	P23141 N00	1
15	37	10	67	41	71	112	P23142 N00	1
15	47	10	57	51	61	112	P23143 N00	1
15	47	10	67	51	71	112	P23243 N00	1

con 5 chiavi with 5 keys

..... N50

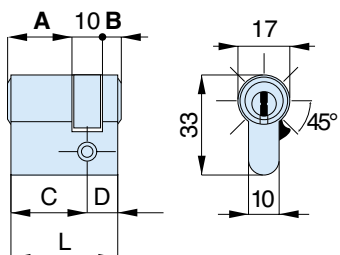
frizionato frictioned

..... NOX

Mezzo cilindro con camma regolabile in 8 posizioni Half cylinder with adjustable cam in 8 positions



HSP

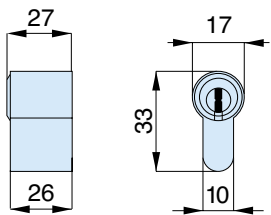


	A	B	C	D	L	codice code	euro	
15	27	10	5	31	10	41	P24420 N00	1
15	31	10	5	35	10	45	P24460 N00	1
15	37	10	5	41	10	51	P24520 N00	1
15	41	10	5	45	10	55	P24560 N00	1
15	47	10	5	51	10	61	P24620 N00	1
15	57	10	5	61	10	71	P24720 N00	1
15	67	10	5	71	10	81	P24820 N00	1
15	77	10	5	81	10	91	P24920 N00	1

con 5 chiavi with 5 keys

..... N50

Mezzo cilindro per lucchetto di sicurezza P92 - nickel opaco
Half cylinder for security padlock P92 - matt nickel

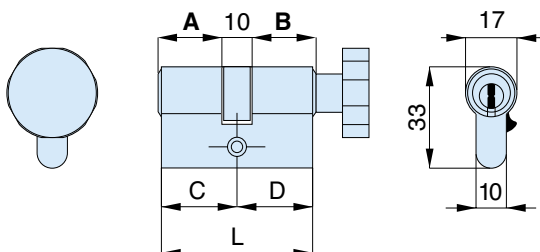


HSP

	A	B	C	D	L	codice code	euro	
15						P24270 N00		1
					 N50		

con 5 chiavi with 5 keys

Doppio cilindro con pomolo ottone nichelato opaco
Double cylinder with matt nickel-plated brass knob



HSP

	A	B	C	D	L	codice code	euro	
15	27	10	27	31	31	62	P29640 NOR	1
15	27	10	31	31	35	66	P29681 NOR	1
15	31	10	27	35	31	66	P29682 NOR	1
15	31	10	31	35	35	70	P29720 NOR	1
15	27	10	37	31	41	72	P29741 NOR	1
15	37	10	27	41	31	72	P29742 NOR	1
15	27	10	41	31	45	76	P29781 NOR	1
15	41	10	27	45	31	76	P29782 NOR	1
15	31	10	37	35	41	76	P29783 NOR	1
15	37	10	31	41	35	76	P29784 NOR	1
15	31	10	41	35	45	80	P29821 NOR	1
15	41	10	31	45	35	80	P29822 NOR	1
15	27	10	47	31	51	82	P29841 NOR	1
15	47	10	27	51	31	82	P29842 NOR	1
15	37	10	37	41	41	82	P29843 NOR	1
15	27	10	51	31	55	86	P29881 NOR	1
15	31	10	47	35	51	86	P29882 NOR	1
15	37	10	41	41	45	86	P29883 NOR	1
15	41	10	37	45	41	86	P29884 NOR	1
15	31	10	51	35	55	90	P29921 NOR	1
15	41	10	41	45	45	90	P29922 NOR	1
15	27	10	57	31	61	92	P29941 NOR	1
15	37	10	47	41	51	92	P29942 NOR	1
15	37	10	51	41	55	96	P29981 NOR	1
15	41	10	47	45	51	96	P29982 NOR	1
15	41	10	51	45	55	100	P29020 NOR	1
15	27	10	67	31	71	102	P29041 NOR	1
15	37	10	57	41	61	102	P29042 NOR	1
15	47	10	47	51	51	102	P29043 NOR	1
15	27	10	77	31	81	112	P29141 NOR	1
15	37	10	67	41	71	112	P29142 NOR	1
15	47	10	57	51	61	112	P29143 NOR	1

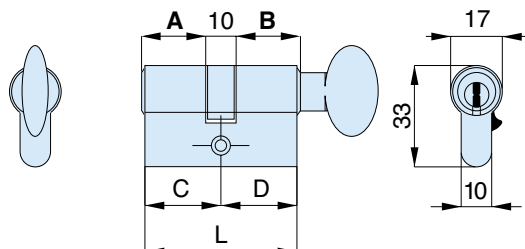
con 5 chiavi with 5 keys

..... N5R

Doppio cilindro con pomolo ottone nichelato opaco
Double cylinder with matt nickel-plated brass knob



HSP



	A	B	C	D	L	codice code	euro	
15	27	10	27	31	31	62	P29640 N0F	1
15	27	10	31	31	35	66	P29681 N0F	1
15	31	10	27	35	31	66	P29682 N0F	1
15	31	10	31	35	35	70	P29720 N0F	1
15	27	10	37	31	41	72	P29741 N0F	1
15	37	10	27	41	31	72	P29742 N0F	1
15	27	10	41	31	45	76	P29781 N0F	1
15	41	10	27	45	31	76	P29782 N0F	1
15	31	10	37	35	41	76	P29783 N0F	1
15	37	10	31	41	35	76	P29784 N0F	1
15	31	10	41	35	45	80	P29821 N0F	1
15	41	10	31	45	35	80	P29822 N0F	1
15	27	10	47	31	51	82	P29841 N0F	1
15	47	10	27	51	31	82	P29842 N0F	1
15	37	10	37	41	41	82	P29843 N0F	1
15	27	10	51	31	55	86	P29881 N0F	1
15	31	10	47	35	51	86	P29882 N0F	1
15	37	10	41	41	45	86	P29883 N0F	1
15	41	10	37	45	41	86	P29884 N0F	1
15	31	10	51	35	55	90	P29921 N0F	1
15	41	10	41	45	45	90	P29922 N0F	1
15	27	10	57	31	61	92	P29941 N0F	1
15	37	10	47	41	51	92	P29942 N0F	1
15	37	10	51	41	55	96	P29981 N0F	1
15	41	10	47	45	51	96	P29982 N0F	1
15	41	10	51	45	55	100	P29020 N0F	1
15	27	10	67	31	71	102	P29041 N0F	1
15	37	10	57	41	61	102	P29042 N0F	1
15	47	10	47	51	51	102	P29043 N0F	1
15	27	10	77	31	81	112	P29141 N0F	1
15	37	10	67	41	71	112	P29142 N0F	1
15	47	10	57	51	61	112	P29143 N0F	1

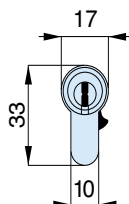
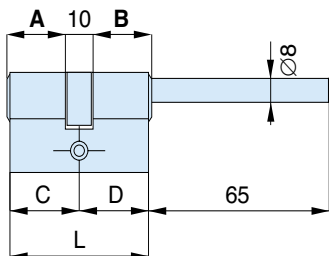
con 5 chiavi with 5 keys

..... N5F

Doppio cilindro predisposto pomolo
Double cylinder with knob provision



HSP

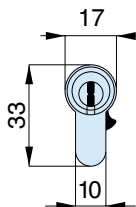
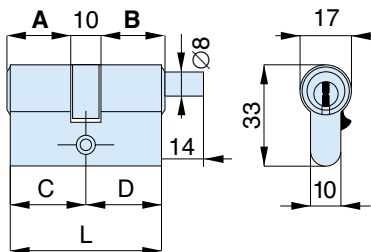


	A	B	C	D	L	codice code	euro	
15	27	10	27	31	31	62	P29640 N0L	1
15	31	10	27	35	31	66	P29680 N0L	1
15	37	10	27	41	31	72	P29740 N0L	1
15	41	10	27	45	31	76	P29780 N0L	1
15	47	10	27	51	31	82	P29840 N0L	1
15	51	10	27	55	31	86	P29880 N0L	1
15	57	10	27	61	31	92	P29940 N0L	1
15	67	10	27	71	31	102	P29040 N0L	1
15	77	10	27	81	31	112	P29140 N0L	1
con 5 chiavi with 5 keys					 N5L		

Doppio cilindro predisposto pomolo
Double cylinder with knob provision



HSP



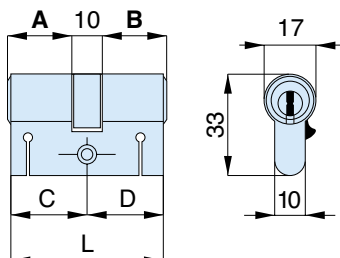
	A	B	C	D	L	codice code	euro	
15	27	10	27	31	31	62	P29640 N0C	1
15	27	10	31	31	35	66	P29681 N0C	1
15	31	10	27	35	31	66	P29682 N0C	1
15	31	10	31	35	35	70	P29720 N0C	1
15	27	10	37	31	41	72	P29741 N0C	1
15	37	10	27	41	31	72	P29742 N0C	1
15	27	10	41	31	45	76	P29781 N0C	1
15	41	10	27	45	31	76	P29782 N0C	1
15	31	10	37	35	41	76	P29783 N0C	1
15	37	10	31	41	35	76	P29784 N0C	1
15	31	10	41	35	45	80	P29821 N0C	1
15	41	10	31	45	35	80	P29822 N0C	1
15	27	10	47	31	51	82	P29841 N0C	1
15	47	10	27	51	31	82	P29842 N0C	1
15	37	10	37	41	41	82	P29843 N0C	1
15	27	10	51	31	55	86	P29881 N0C	1
15	31	10	47	35	51	86	P29882 N0C	1
15	37	10	41	41	45	86	P29883 N0C	1
15	41	10	37	45	41	86	P29884 N0C	1
15	31	10	51	35	55	90	P29921 N0C	1
15	41	10	41	45	45	90	P29922 N0C	1
15	27	10	57	31	61	92	P29941 N0C	1
15	37	10	47	41	51	92	P29942 N0C	1
15	37	10	51	41	55	96	P29981 N0C	1
15	41	10	47	45	51	96	P29982 N0C	1
15	41	10	51	45	55	100	P29020 N0C	1
15	27	10	67	31	71	102	P29041 N0C	1
15	37	10	57	41	61	102	P29042 N0C	1
15	47	10	47	51	51	102	P29043 N0C	1
15	27	10	77	31	81	112	P29141 N0C	1
15	37	10	67	41	71	112	P29142 N0C	1
15	47	10	57	51	61	112	P29143 N0C	1
con 5 chiavi with 5 keys					 N5C		

Doppio cilindro con rinforzo e taglio

Double cylinder with reinforce and cut



HSP



	A	B	C	D	L	codice code	euro	
15	27	10	27	31	31	62	P33640 N00	1
15	27	10	31	31	35	66	P33680 N00	1
15	31	10	31	35	35	70	P33720 N00	1
15	27	10	37	31	41	72	P33740 N00	1
15	27	10	41	31	45	76	P33781 N00	1
15	31	10	37	35	41	76	P33782 N00	1
15	31	10	41	35	45	80	P33820 N00	1
15	27	10	47	31	51	82	P33841 N00	1
15	37	10	37	41	41	82	P33842 N00	1
15	27	10	51	31	55	86	P33881 N00	1
15	31	10	47	35	51	86	P33882 N00	1
15	37	10	41	41	45	86	P33883 N00	1
15	31	10	51	35	55	90	P33921 N00	1
15	41	10	41	45	45	90	P33922 N00	1
15	27	10	57	31	61	92	P33941 N00	1
15	37	10	47	41	51	92	P33942 N00	1
15	37	10	51	41	55	96	P33981 N00	1
15	41	10	47	45	51	96	P33982 N00	1
15	31	10	57	35	61	96	P33983 N00	1
15	41	10	51	45	55	100	P33020 N00	1
15	27	10	67	31	71	102	P33041 N00	1
15	37	10	57	41	61	102	P33042 N00	1
15	47	10	47	51	51	102	P33043 N00	1
15	27	10	77	31	81	112	P33141 N00	1
15	37	10	67	41	71	112	P33142 N00	1
15	47	10	57	51	61	112	P33143 N00	1
15	47	10	67	51	71	122	P33243 N00	1

con 5 chiavi with 5 keys

..... N50

frizionato frictioned

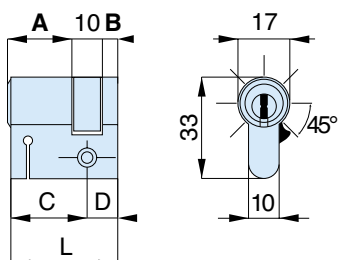
..... NOX

Mezzo cilindro con taglio e camma regolabile in 8 posizioni

Half cylinder with cut and adjustable cam in 8 positions



HSP



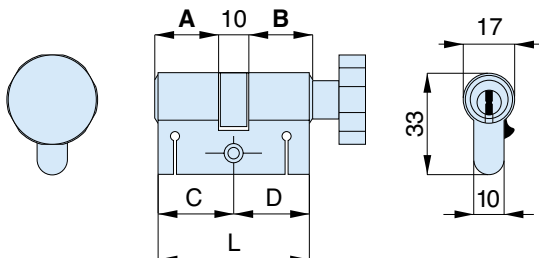
	A	B	C	D	L	codice code	euro	
15	27	10	5	31	10	41	P34420 N00	1
15	31	10	5	35	10	45	P34460 N00	1
15	37	10	5	41	10	51	P34520 N00	1
15	41	10	5	45	10	55	P34560 N00	1
15	47	10	5	51	10	61	P34620 N00	1
15	57	10	5	61	10	71	P34720 N00	1
15	67	10	5	71	10	81	P34820 N00	1
15	77	10	5	81	10	91	P34920 N00	1

con 5 chiavi with 5 keys

..... N50

Doppio cilindro con pomolo ottone nichelato opaco con rinforzo e taglio
Double cylinder with matt nickel-plated brass knob with reinforce and cut

HSP



	A	B	C	D	L	codice code	euro	
15	27	10	27	31	31	62	P39640 N0R	1
15	27	10	31	31	35	66	P39681 N0R	1
15	31	10	27	35	31	66	P39682 N0R	1
15	31	10	31	35	35	70	P39720 N0R	1
15	27	10	37	31	41	72	P39741 N0R	1
15	37	10	27	41	31	72	P39742 N0R	1
15	27	10	41	31	45	76	P39781 N0R	1
15	41	10	27	45	31	76	P39782 N0R	1
15	31	10	37	35	41	76	P39783 N0R	1
15	37	10	31	41	35	76	P39784 N0R	1
15	31	10	41	35	45	80	P39821 N0R	1
15	41	10	31	45	35	80	P39822 N0R	1
15	27	10	47	31	51	82	P39841 N0R	1
15	47	10	27	51	31	82	P39842 N0R	1
15	37	10	37	41	41	82	P39843 N0R	1
15	27	10	51	31	55	86	P39881 N0R	1
15	31	10	47	35	51	86	P39882 N0R	1
15	37	10	41	41	45	86	P39883 N0R	1
15	41	10	37	45	41	86	P39884 N0R	1
15	31	10	51	35	55	90	P39921 N0R	1
15	41	10	41	45	45	90	P39922 N0R	1
15	27	10	57	31	61	92	P39941 N0R	1
15	37	10	47	41	51	92	P39942 N0R	1
15	37	10	51	41	55	96	P39981 N0R	1
15	41	10	47	45	51	96	P39982 N0R	1
15	41	10	51	45	55	100	P39020 N0R	1
15	27	10	67	31	71	102	P39041 N0R	1
15	37	10	57	41	61	102	P39042 N0R	1
15	47	10	47	51	51	102	P39043 N0R	1
15	27	10	77	31	81	112	P39141 N0R	1
15	37	10	67	41	71	112	P39142 N0R	1
15	47	10	57	51	61	112	P39143 N0R	1

con 5 chiavi with 5 keys

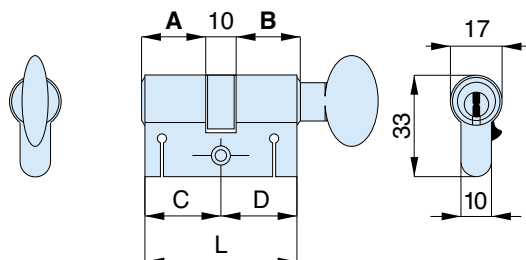
..... N5R

CILINDRI DI SICUREZZA DA INFILARE
security mortice cylinders

Doppio cilindro con pomolo ottone nichelato opaco con rinforzo e taglio
Double cylinder with matt nickel-plated brass knob with reinforce and cut



HSP

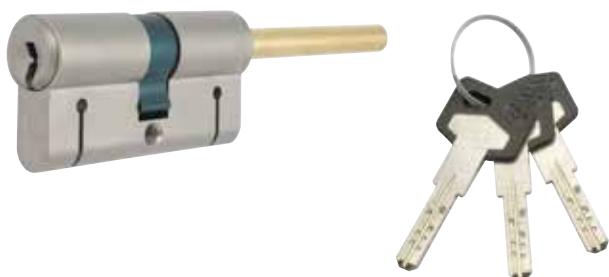


	A	B	C	D	L	codice code	euro	
15	27	10	27	31	31	62	P39640 N0F	1
15	27	10	31	31	35	66	P39681 N0F	1
15	31	10	27	35	31	66	P39682 N0F	1
15	31	10	31	35	35	70	P39720 N0F	1
15	27	10	37	31	41	72	P39741 N0F	1
15	37	10	27	41	31	72	P39742 N0F	1
15	27	10	41	31	45	76	P39781 N0F	1
15	41	10	27	45	31	76	P39782 N0F	1
15	31	10	37	35	41	76	P39783 N0F	1
15	37	10	31	41	35	76	P39784 N0F	1
15	31	10	41	35	45	80	P39821 N0F	1
15	41	10	31	45	35	80	P39822 N0F	1
15	27	10	47	31	51	82	P39841 N0F	1
15	47	10	27	51	31	82	P39842 N0F	1
15	37	10	37	41	41	82	P39843 N0F	1
15	27	10	51	31	55	86	P39881 N0F	1
15	31	10	47	35	51	86	P39882 N0F	1
15	37	10	41	41	45	86	P39883 N0F	1
15	41	10	37	45	41	86	P39884 N0F	1
15	31	10	51	35	55	90	P39921 N0F	1
15	41	10	41	45	45	90	P39922 N0F	1
15	27	10	57	31	61	92	P39941 N0F	1
15	37	10	47	41	51	92	P39942 N0F	1
15	37	10	51	41	55	96	P39981 N0F	1
15	41	10	47	45	51	96	P39982 N0F	1
15	41	10	51	45	55	100	P39020 N0F	1
15	27	10	67	31	71	102	P39041 N0F	1
15	37	10	57	41	61	102	P39042 N0F	1
15	47	10	47	51	51	102	P39043 N0F	1
15	27	10	77	31	81	112	P39141 N0F	1
15	37	10	67	41	71	112	P39142 N0F	1
15	47	10	57	51	61	112	P39143 N0F	1

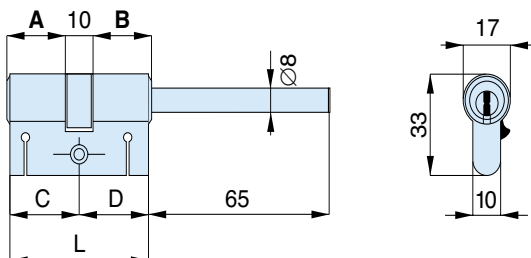
con 5 chiavi with 5 keys

..... N5F

Doppio cilindro predisposto pomolo con rinforzo e taglio
Double cylinder with knob provision with reinforce and cut

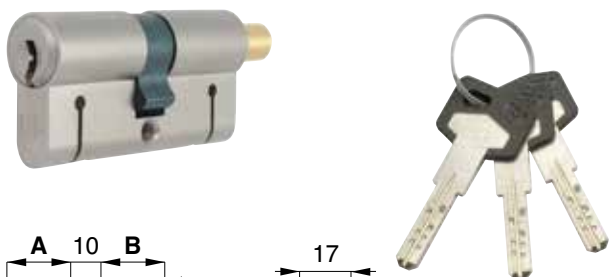


HSP

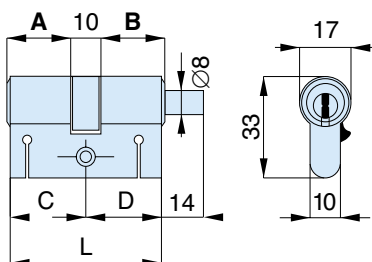


	A	B	C	D	L	codice code	euro	
15	27	10	27	31	31	62	P39640 N0L	1
15	31	10	27	35	31	66	P39680 N0L	1
15	37	10	27	41	31	72	P39740 N0L	1
15	41	10	27	45	31	76	P39780 N0L	1
15	47	10	27	51	31	82	P39840 N0L	1
15	51	10	27	55	31	86	P39880 N0L	1
15	57	10	27	61	31	92	P39940 N0L	1
15	67	10	27	71	31	102	P39040 N0L	1
15	77	10	27	81	31	112	P39140 N0L	1
con 5 chiavi with 5 keys					 N5L		

Doppio cilindro predisposto pomolo con rinforzo e taglio
Double cylinder with knob provision with reinforce and cut



HSP

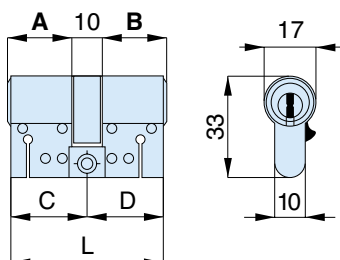


	A	B	C	D	L	codice code	euro	
15	27	10	27	31	31	62	P39640 N0C	1
15	27	10	31	31	35	66	P39681 N0C	1
15	31	10	27	35	31	66	P39682 N0C	1
15	31	10	31	35	35	70	P39720 N0C	1
15	27	10	37	31	41	72	P39741 N0C	1
15	37	10	27	41	31	72	P39742 N0C	1
15	27	10	41	31	45	76	P39781 N0C	1
15	41	10	27	45	31	76	P39782 N0C	1
15	31	10	37	35	41	76	P39783 N0C	1
15	37	10	31	41	35	76	P39784 N0C	1
15	31	10	41	35	45	80	P39821 N0C	1
15	41	10	31	45	35	80	P39822 N0C	1
15	27	10	47	31	51	82	P39841 N0C	1
15	47	10	27	51	31	82	P39842 N0C	1
15	37	10	37	41	41	82	P39843 N0C	1
15	27	10	51	31	55	86	P39881 N0C	1
15	31	10	47	35	51	86	P39882 N0C	1
15	37	10	41	41	45	86	P39883 N0C	1
15	41	10	37	45	41	86	P39884 N0C	1
15	31	10	51	35	55	90	P39921 N0C	1
15	41	10	41	45	45	90	P39922 N0C	1
15	27	10	57	31	61	92	P39941 N0C	1
15	37	10	47	41	51	92	P39942 N0C	1
15	37	10	51	41	55	96	P39981 N0C	1
15	41	10	47	45	51	96	P39982 N0C	1
15	41	10	51	45	55	100	P39020 N0C	1
15	27	10	67	31	71	102	P39041 N0C	1
15	37	10	57	41	61	102	P39042 N0C	1
15	47	10	47	51	51	102	P39043 N0C	1
15	27	10	77	31	81	112	P39141 N0C	1
15	37	10	67	41	71	112	P39142 N0C	1
15	47	10	57	51	61	112	P39143 N0C	1
con 5 chiavi with 5 keys					 N5C		

Doppio cilindro MODULARE con taglio MODULAR double cylinder with cut



HSP



Cilindro valutato in base alla norma Europea EN 1303:05
Cylinder measured by means of the EN 1303:05 standard

	A	B	C	D	L	codice code	euro	
15	27	10	27	31	31	62	P43640 N00	1
15	27	10	31	31	35	66	P43680 N00	1
15	31	10	31	35	35	70	P43720 N00	1
15	27	10	37	31	41	72	P43740 N00	1
15	27	10	41	31	45	76	P43781 N00	1
15	31	10	37	35	41	76	P43782 N00	1
15	31	10	41	35	45	80	P43820 N00	1
15	27	10	47	31	51	82	P43841 N00	1
15	37	10	37	41	41	82	P43842 N00	1
15	27	10	51	31	55	86	P43881 N00	1
15	31	10	47	35	51	86	P43882 N00	1
15	37	10	41	41	45	86	P43883 N00	1
15	31	10	51	35	55	90	P43921 N00	1
15	41	10	41	45	45	90	P43922 N00	1
15	27	10	57	31	61	92	P43941 N00	1
15	37	10	47	41	51	92	P43942 N00	1
15	37	10	51	41	55	96	P43981 N00	1
15	41	10	47	45	51	96	P43982 N00	1
15	31	10	57	35	61	96	P43983 N00	1
15	41	10	51	45	55	100	P43020 N00	1
15	27	10	67	31	71	102	P43041 N00	1
15	37	10	57	41	61	102	P43042 N00	1
15	47	10	47	51	51	102	P43043 N00	1
15	27	10	77	31	81	112	P43141 N00	1
15	37	10	67	41	71	112	P43142 N00	1
15	47	10	57	51	61	112	P43143 N00	1
15	47	10	67	51	71	122	P43243 N00	1

con 5 chiavi with 5 keys

..... N50

frizionato frictioned

..... NOX

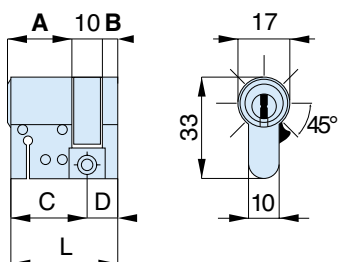
Con la versione modulare si possono produrre cilindri
fino alla lunghezza totale di 212 mm. (121-91)

With the modular version, it's possible to realize cylinders till
the following total length: 212 mm (121-91)

Mezzo cilindro MODULARE con taglio e camma regolabile in 8 posizioni MODULAR half cylinder with cut and adjustable cam in 8 positions



HSP



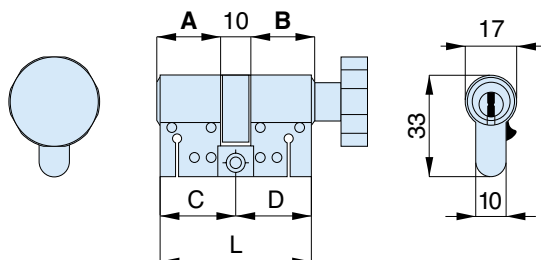
	A	B	C	D	L	codice code	euro	
15	27	10	5	31	10	41	P44420 N00	1
15	31	10	5	35	10	45	P44460 N00	1
15	37	10	5	41	10	51	P44520 N00	1
15	41	10	5	45	10	55	P44560 N00	1
15	47	10	5	51	10	61	P44620 N00	1
15	57	10	5	61	10	71	P44720 N00	1
15	67	10	5	71	10	81	P44820 N00	1
15	77	10	5	81	10	91	P44920 N00	1

con 5 chiavi with 5 keys

..... N50

Doppio cilindro MODULARE con pomolo ottone nichelato opaco con taglio
MODULAR double cylinder with matt nickel-plated brass knob with cut

HSP



	A	B	C	D	L	codice code	euro	
15	27	10	27	31	31	62	P49640 N0R	1
15	27	10	31	31	35	66	P49681 N0R	1
15	31	10	27	35	31	66	P49682 N0R	1
15	31	10	31	35	35	70	P49720 N0R	1
15	27	10	37	31	41	72	P49741 N0R	1
15	37	10	27	41	31	72	P49742 N0R	1
15	27	10	41	31	45	76	P49781 N0R	1
15	41	10	27	45	31	76	P49782 N0R	1
15	31	10	37	35	41	76	P49783 N0R	1
15	37	10	31	41	35	76	P49784 N0R	1
15	31	10	41	35	45	80	P49821 N0R	1
15	41	10	31	45	35	80	P49822 N0R	1
15	27	10	47	31	51	82	P49841 N0R	1
15	47	10	27	51	31	82	P49842 N0R	1
15	37	10	37	41	41	82	P49843 N0R	1
15	27	10	51	31	55	86	P49881 N0R	1
15	31	10	47	35	51	86	P49882 N0R	1
15	37	10	41	41	45	86	P49883 N0R	1
15	41	10	37	45	41	86	P49884 N0R	1
15	31	10	51	35	55	90	P49921 N0R	1
15	41	10	41	45	45	90	P49922 N0R	1
15	27	10	57	31	61	92	P49941 N0R	1
15	37	10	47	41	51	92	P49942 N0R	1
15	37	10	51	41	55	96	P49981 N0R	1
15	41	10	47	45	51	96	P49982 N0R	1
15	41	10	51	45	55	100	P49020 N0R	1
15	27	10	67	31	71	102	P49041 N0R	1
15	37	10	57	41	61	102	P49042 N0R	1
15	47	10	47	51	51	102	P49043 N0R	1
15	27	10	77	31	81	112	P49141 N0R	1
15	37	10	67	41	71	112	P49142 N0R	1
15	47	10	57	51	61	112	P49143 N0R	1

con 5 chiavi with 5 keys

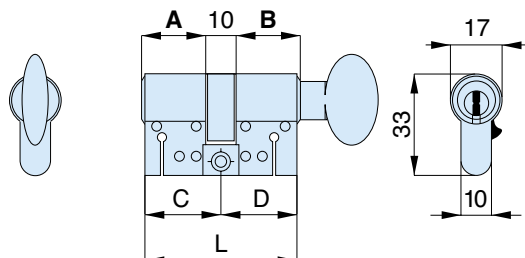
..... N5R

CILINDRI DI SICUREZZA DA INFILARE
security mortice cylinders

Doppio cilindro MODULARE con pomolo ottone nichelato opaco con taglio
MODULAR double cylinder with matt nickel-plated brass knob with cut



HSP



	A	B	C	D	L	codice code	euro	
15	27	10	27	31	31	62	P49640 N0F	1
15	27	10	31	31	35	66	P49681 N0F	1
15	31	10	27	35	31	66	P49682 N0F	1
15	31	10	31	35	35	70	P49720 N0F	1
15	27	10	37	31	41	72	P49741 N0F	1
15	37	10	27	41	31	72	P49742 N0F	1
15	27	10	41	31	45	76	P49781 N0F	1
15	41	10	27	45	31	76	P49782 N0F	1
15	31	10	37	35	41	76	P49783 N0F	1
15	37	10	31	41	35	76	P49784 N0F	1
15	31	10	41	35	45	80	P49821 N0F	1
15	41	10	31	45	35	80	P49822 N0F	1
15	27	10	47	31	51	82	P49841 N0F	1
15	47	10	27	51	31	82	P49842 N0F	1
15	37	10	37	41	41	82	P49843 N0F	1
15	27	10	51	31	55	86	P49881 N0F	1
15	31	10	47	35	51	86	P49882 N0F	1
15	37	10	41	41	45	86	P49883 N0F	1
15	41	10	37	45	41	86	P49884 N0F	1
15	31	10	51	35	55	90	P49921 N0F	1
15	41	10	41	45	45	90	P49922 N0F	1
15	27	10	57	31	61	92	P49941 N0F	1
15	37	10	47	41	51	92	P49942 N0F	1
15	37	10	51	41	55	96	P49981 N0F	1
15	41	10	47	45	51	96	P49982 N0F	1
15	41	10	51	45	55	100	P49020 N0F	1
15	27	10	67	31	71	102	P49041 N0F	1
15	37	10	57	41	61	102	P49042 N0F	1
15	47	10	47	51	51	102	P49043 N0F	1
15	27	10	77	31	81	112	P49141 N0F	1
15	37	10	67	41	71	112	P49142 N0F	1
15	47	10	57	51	61	112	P49143 N0F	1

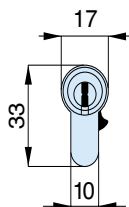
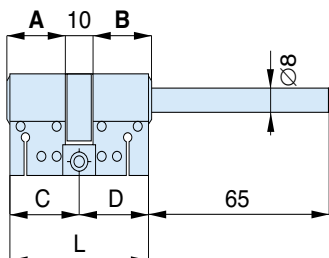
con 5 chiavi with 5 keys

..... N5F

Doppio cilindro MODULARE predisposto pomolo con taglio
MODULAR double cylinder with knob provision with cut



HSP

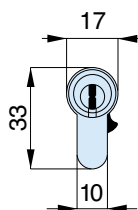
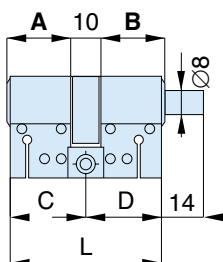


	A	B	C	D	L	codice code	euro	
15	27	10	27	31	31	62	P49640 N0L	1
15	31	10	27	35	31	66	P49680 N0L	1
15	37	10	27	41	31	72	P49740 N0L	1
15	41	10	27	45	31	76	P49780 N0L	1
15	47	10	27	51	31	82	P49840 N0L	1
15	51	10	27	55	31	86	P49880 N0L	1
15	57	10	27	61	31	92	P49940 N0L	1
15	67	10	27	71	31	102	P49040 N0L	1
15	77	10	27	81	31	112	P49140 N0L	1
con 5 chiavi with 5 keys					 N5L		

Doppio cilindro MODULARE predisposto pomolo con taglio
MODULAR double cylinder with knob provision with cut



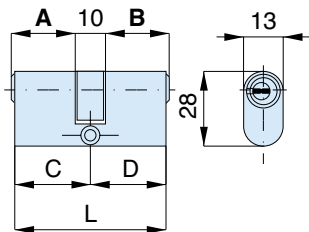
HSP



	A	B	C	D	L	codice code	euro	
15	27	10	27	31	31	62	P49640 N0C	1
15	27	10	31	31	35	66	P49681 N0C	1
15	31	10	27	35	31	66	P49682 N0C	1
15	31	10	31	35	35	70	P49720 N0C	1
15	27	10	37	31	41	72	P49741 N0C	1
15	37	10	27	41	31	72	P49742 N0C	1
15	27	10	41	31	45	76	P49781 N0C	1
15	41	10	27	45	31	76	P49782 N0C	1
15	31	10	37	35	41	76	P49783 N0C	1
15	37	10	31	41	35	76	P49784 N0C	1
15	31	10	41	35	45	80	P49821 N0C	1
15	41	10	31	45	35	80	P49822 N0C	1
15	27	10	47	31	51	82	P49841 N0C	1
15	47	10	27	51	31	82	P49842 N0C	1
15	37	10	37	41	41	82	P49843 N0C	1
15	27	10	51	31	55	86	P49881 N0C	1
15	31	10	47	35	51	86	P49882 N0C	1
15	37	10	41	41	45	86	P49883 N0C	1
15	41	10	37	45	41	86	P49884 N0C	1
15	31	10	51	35	55	90	P49921 N0C	1
15	41	10	41	45	45	90	P49922 N0C	1
15	27	10	57	31	61	92	P49941 N0C	1
15	37	10	47	41	51	92	P49942 N0C	1
15	37	10	51	41	55	96	P49981 N0C	1
15	41	10	47	45	51	96	P49982 N0C	1
15	41	10	51	45	55	100	P49020 N0C	1
15	27	10	67	31	71	102	P49041 N0C	1
15	37	10	57	41	61	102	P49042 N0C	1
15	47	10	47	51	51	102	P49043 N0C	1
15	27	10	77	31	81	112	P49141 N0C	1
15	37	10	67	41	71	112	P49142 N0C	1
15	47	10	57	51	61	112	P49143 N0C	1
con 5 chiavi with 5 keys					 N5C		

Doppio cilindro ovale

Double oval cylinder



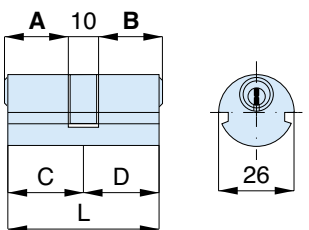
HSP

Per cilindri P18 sono previsti solo impianti a chiave uguale
For the cylinders P18 are foreseen just key alike systems

	A	B	C	D	L	codice code	euro	
5	27	10	27	31	31	62	P18640 N00	1
con 5 chiavi with 5 keys					 N50		

Doppio cilindro Ø 26

Double cylinder Ø 26

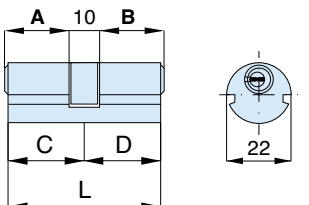


HSP

	A	B	C	D	L	codice code	euro	
15	27	10	27	31	31	62	P19640 N00	1
15	27	10	47	31	51	82	P19841 N00	1
con 5 chiavi with 5 keys					 N50		

Doppio cilindro Ø 22

Double cylinder Ø 22



HSP

	A	B	C	D	L	codice code	euro	
5	27	10	27	31	31	62	P20640 N00	1
con 5 chiavi with 5 keys					 N50		

Per cilindri P20 sono previsti solo impianti a chiave uguale
For the cylinders P20 are foreseen just key alike systems